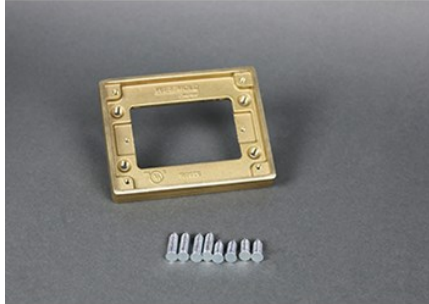


---

## FLANGE

817T | [Wiremold](#)



---

### FEATURES & BENEFITS

One-gang brass tile flange, 4.524" x 3.480" (107.0mm x 88.4mm). For use on 880S1, 880M1, 880CS1-1, and 880M1-1 Floor Boxes. NOTE: Brass cover plates can only be used with brass flanges. Brass cover plates can only be used with brass flanges. Brushed aluminum flanges come with beveled edges.



- This product meets the material restrictions of RoHS

---

### SPECIFICATIONS

#### GENERAL INFO

Product Series: Omnibox  
Component Type: Covers & Flanges

#### LISTING AGENCIES/THIRD PARTY CERTIFICATIONS

RoHS: Yes

#### BUY AMERICAN ACT COMPLIANCE

Country Of Origin: CHINA  
Buy American Act Status: No