

FEATURES & SPECIFICATIONS

INTENDED USE — The RTL combines digital LED lighting and controls technologies with patented high-performance optical design to offer the most advanced luminaire for general-ambient lighting applications. High-efficacy light engine delivers long life and excellent color, ensuring a superior quality lighting installation that is highly efficient and sustainable.

CONSTRUCTION — Rugged, one-piece cold-rolled steel reflector assembly with embossed facets. Coated polyester powder-paint after fabrication.

Rigid structure with ballast box and end plates. End plates include integral T-bar clips.

Impact-modified acrylic prismatic refractor

Luminaires may be mounted end-to-end and continuously wired.

OPTICS — Volumetric illumination is delivered by creating an optimal mix of light to walls, partitions, vertical and horizontal work surfaces — rendering the interior space, objects and occupants in a more balanced, complementary luminous environment.

Light distribution is carefully controlled at high angles, providing just enough luminous flux to create the volumetric effect.

Linear faceted reflector cavity softens and distributes light into the space while minimizing luminous contrast between the fixture and ceiling.

Sloped end plates provide a smooth, luminous transition between fixture and ceiling while enhancing the perception of fixture depth.

ELECTRICAL — Long-life LEDs, coupled with high-efficiency drivers, provide superior quantity and quality of illumination for extended service life. RTL is rated to deliver L90 performance for 60,000 hours.

Optional integrated nLight® controls make each luminaire addressable - allowing it to digitally communicate with other nLight enabled controls such as dimmers, switches, occupancy sensors and photocontrols. Simply connect all the nLight enabled control devices and the RTL luminaires using standard CAT-5 cabling. Unique plug-and-play convenience as devices and luminaires automatically discover each other and self-commission.

Lumen Management: Unique lumen management system (option N80) provides onboard intelligence that actively manages the LED light source so that constant lumen output is maintained over the system life, preventing the energy waste created by the traditional practice of over-lighting.

Step-level dimming option allows system to be switched to 50% power for compliance with common energy codes while maintaining fixture appearance.

eldoLED driver options deliver choice of dimming range, and choice of control, while assuring flicker-free, low current inrush, 89% efficiency and low EMI.

Driver disconnect provided where required to comply with US and Canadian codes.

INSTALLATION — Drivers and internal components accessed via plenum. Driver tray may be removed from fixture during service. Suitable for damp location.

Maintenance: LED boards include plug-in connectors for easy replacement or servicing.

LISTINGS — CSA Certified to meet U.S. and Canadian standards. IC rated.

Tested to LM80 standards. IC rated. DesignLights Consortium® (DLC) Premium qualified product. Not all versions of this product may be DLC Premium qualified. Please check the DLC Qualified Products List at www.designlights.org/QPL to confirm which versions are qualified.

Protected by one or more of US Patent Nos. 7,229,192; D541,467; D541,468; D544,633; D544,634; D544,992. D544,933 and additional patents pending.

WARRANTY — 5-year limited warranty. Complete warranty terms located at www.acuitybrands.com/CustomerResources/Terms_and_conditions.aspx

Note: Actual performance may differ as a result of end-user environment and application.

All values are design or typical values, measured under laboratory conditions at 25°C.

Specifications subject to change without notice.

| |
|----------------|
| Catalog Number |
| Notes |
| Type |



Volumetric Lighting

2RTL

2' X 4'
LED



eldoLED



INDUSTRY RECOGNITION/AWARDS



A+ Capable Luminaire

This item is an A+ capable luminaire, which has been designed and tested to provide consistent color appearance and out-of-the-box control compatibility with simple commissioning.

- All configurations of this luminaire meet the Acuity Brands' specification for chromatic consistency
- This luminaire is part of an A+ Certified solution for nLight® control networks when ordered with drivers marked by a shaded background*
- This luminaire is part of an A+ Certified solution for nLight control networks, providing advanced control functionality at the luminaire level, when selection includes driver and control options marked by a shaded background*

To learn more about A+, visit www.acuitybrands.com/aplus.

*See ordering tree for details

2RTL Volumetric Recessed Lighting 2'x4'



A+ Capable options indicated by this color background.

ORDERING INFORMATION

Lead times will vary depending on options selected. Consult with your sales representative.

Example: 2RTL4 48L EZ1 LP835 N80

| 2RTL4 | | Air function | | Lumens | | Voltage | | Driver ³ | | Color temperature | | Controls ⁵ | | Option | | | | | | | | | | | | | | | | | | | |
|-------|------------------|--|--|--------|-------------------|---------|--------------------|---------------------|--|-------------------|----------------|-----------------------|-------------|--------|--------------------------------|-----|------------------|-----|--|-------|----------------|-----|----------------------------------|--------|--|-------|----------------|------|---------------------------------|-------|----------------|---------|---|
| 2RTL4 | Recessed 2X4 LED | (blank) CAS | No air Center air slots (air removal) | 30L | 3000 ¹ | (blank) | MVOLT (120 - 277V) | EZ1 | eldoLED dims to 1% (0-10 volt dimming) | LP830 | 3000 K, 82 CRI | (blank) | No controls | EL7L | 700 nominal lumen battery pack | | | | | | | | | | | | | | | | | | |
| | | | | 40L | 4000 ¹ | | | | | | | | | | | 347 | 347 ² | EZB | eldoLED dims to dark (0-10 volt dimming) | LP835 | 3500 K, 82 CRI | N80 | nLight with 80% lumen management | | | | | | | | | | |
| | | | | 48L | 4800 ¹ | | | | | | | | | | | | | | | | | | | N80EMG | nLight with 80% lumen management for use with generator supply EM power ⁶ | | | | | | | | |
| | | | | 60L | 6000 ¹ | | | | | | | | | | | | | | | | | | | | | LP840 | 4000 K, 82 CRI | N100 | nLight without lumen management | | | | |
| | | | | 72L | 7200 ¹ | | | | | | | | | | | | | | | | | | | | | | | | | LP850 | 5000 K, 82 CRI | N100EMG | nLight without lumen management for use with generator supply EM power ⁶ |
| | | | | EDB | | | | | | | | | | | | | | | | | | | | | | | | | | | | | |
| EXB | | eldoLED DMX/RDM ³ | | | | | | | | | | | | | | | | | | | | | | | | | | | | | | | |
| SLD | | Step-level dimming ³ | | | | | | | | | | | | | | | | | | | | | | | | | | | | | | | |
| EXA1 | | Dims to 1%, XPoint wireless enabled ^{3,4} | | | | | | | | | | | | | | | | | | | | | | | | | | | | | | | |
| EXAB | | Dims to dark, XPoint wireless enabled ^{3,4} | | | | | | | | | | | | | | | | | | | | | | | | | | | | | | | |

| | |
|---|---|
| Accessories: Order as separate catalog number. | |
| DGA24 | Drywall ceiling adaptor , unit installation |

Notes

- 1 Approximate lumen output.
- 2 Not available with EL battery packs or SLD driver.
- 3 Not available with N80, N80EMG, N100, or N100EMG.
- 4 Gateway not included. Requires on-site commissioning. Visit www.lightingcontrols.com/XPointWireless for more information.
- 5 nLight access limitations with EZB.
- 6 nLight EMG option requires a connection to existing nLight network. Power is provided from a separate N80 or N100 enabled fixture.

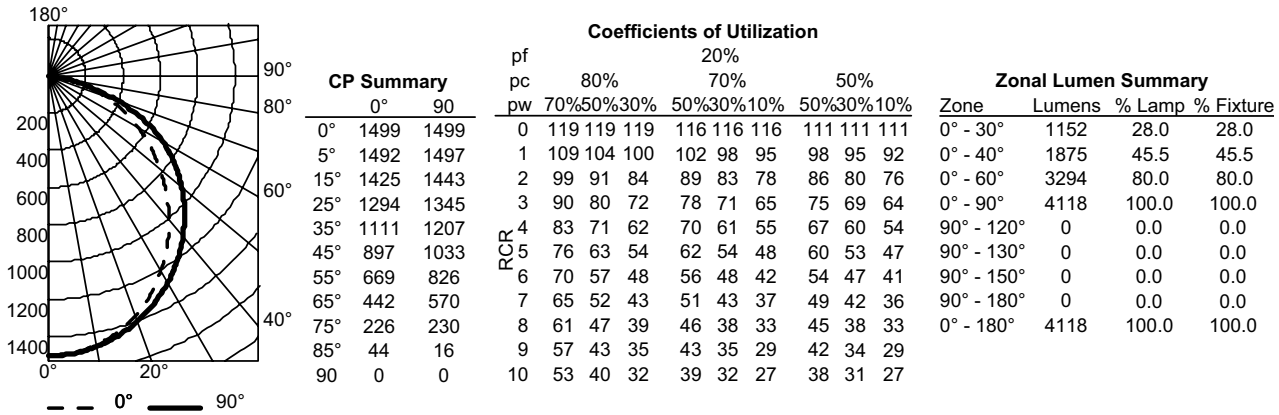
Performance Data

| Lumen Package | Lumens | Input Watts | LPW |
|---------------|--------|-------------|-----|
| 30L LP830 | 3010 | 30.45 | 99 |
| 30L LP835 | 3100 | 30.45 | 102 |
| 30L LP840 | 3191 | 30.45 | 105 |
| 30L LP850 | 3304 | 30.45 | 109 |
| 40L LP830 | 3913 | 38.52 | 112 |
| 40L LP835 | 4118 | 38.52 | 118 |
| 40L LP840 | 4305 | 38.52 | 124 |
| 40L LP850 | 4416 | 38.36 | 115 |
| 48L LP830 | 4545 | 46.58 | 97 |
| 48L LP835 | 4786 | 46.58 | 103 |
| 48L LP840 | 5027 | 46.58 | 108 |
| 48L LP850 | 5147 | 46.52 | 111 |
| 60L LP830 | 5178 | 54.8 | 94 |
| 60L LP835 | 5418 | 54.8 | 99 |
| 60L LP840 | 5689 | 54.8 | 104 |
| 60L LP850 | 5870 | 54.8 | 107 |
| 72L LP830 | 6653 | 71.08 | 93 |
| 72L LP835 | 6984 | 71.08 | 98 |
| 72L LP840 | 7315 | 71.08 | 103 |
| 72L LP850 | 7580 | 71.08 | 107 |

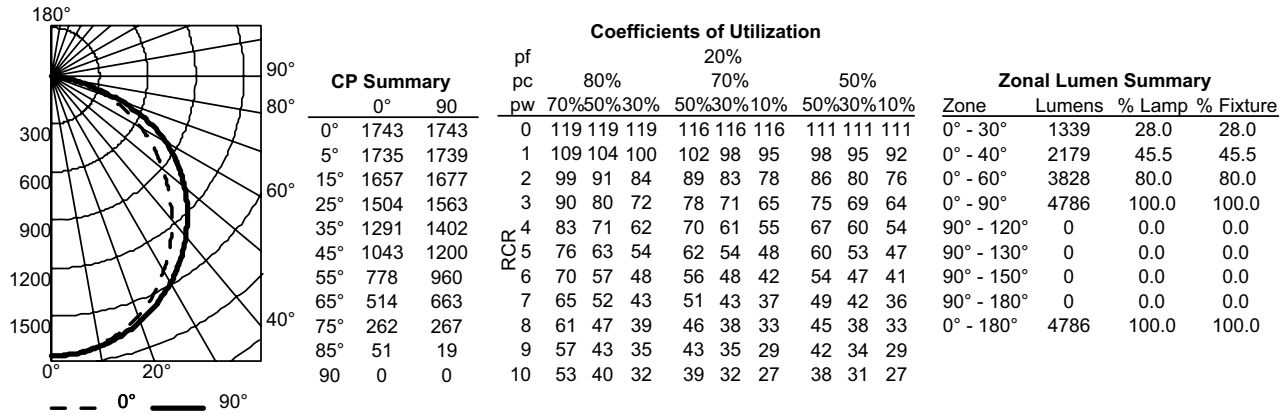
2RTL Volumetric Recessed Lighting 2'x4'

PHOTOMETRICS

2RTL4 40L LP835, 4,118 delivered lumens, test no. LTL25588P4, tested in accordance to IESNA LM-79.



2RTL4 48L LP835, 4,786 delivered lumens, test no. LTL25588P8, tested in accordance to IESNA LM-79.

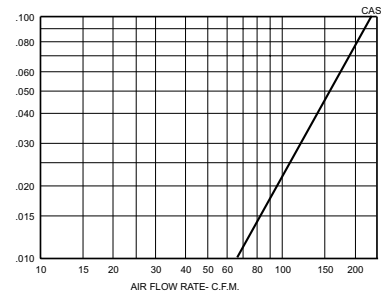
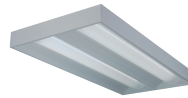


nLight® Control Accessories:

Order as separate catalog number. Visit www.sensorswitch.com/nLight for complete listing of nLight controls.

| WallPod stations | Model number | Occupancy sensors | Model number |
|----------------------|------------------|--|---------------------|
| On/Off | nPODM [color] | Small motion 360°, ceiling (PIR / dual tech) | nCM 9 / nCM PDT 9 |
| On/Off & Raise/Lower | nPODM DX [color] | Large motion 360°, ceiling (PIR / dual tech) | nCM 10 / nCM PDT 10 |
| Graphic Touchscreen | nPOD GFX | Wall switch with raise/lower | nWSXPDTLVDX |
| Photocell controls | Model number | Cat-5 cable bundles (plenum rated) | Model number |
| On/Off & Dimming | nCM ADCX | 10', 15 pieces per bundle | CATS 10FT |
| | | 30', 15 pieces per bundle | CATS 30FT |

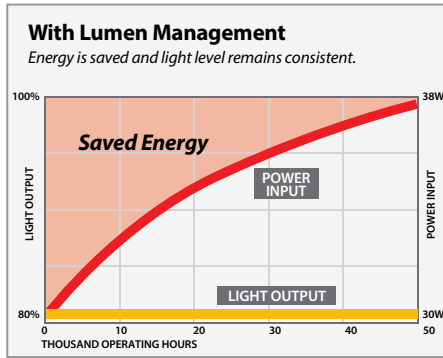
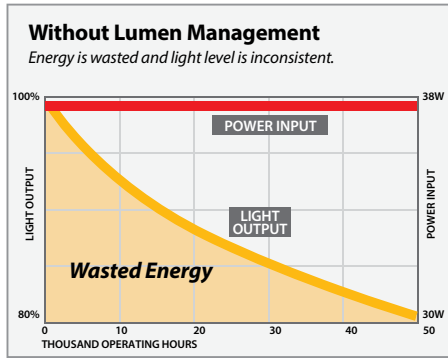
RTL with Air Handling



2RTL Volumetric Recessed Lighting 2'x4'

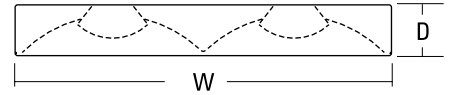
Constant Lumen Management

Enabled by the embedded nLight control, the RTL actively tracks its run-time and manages its light source such that constant lumen output is maintained over the system life. Referred to as lumen management, this feature eliminates the energy waste created by the traditional practice of over-lighting.



Dimensions

All dimensions are inches (centimeters) unless otherwise specified.



- Specifications
- Length: 48 (121.9)
 - Width: 24 (61.0)
 - Depth: 3-1/8 (7.9)