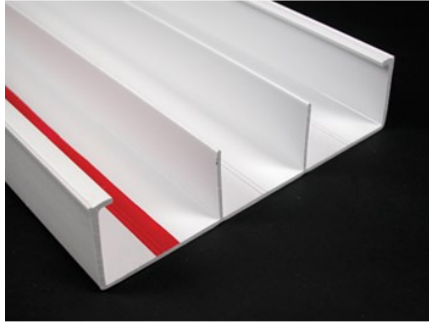


---

## 5500 DIVIDED RACEWAY BASE

5500BD3 | [Wiremold](#)



---

### FEATURES & BENEFITS

Three equal compartments - use for separate services in one raceway. Breakaway dividers enable compartment configurations. Available in 8' (2.44m) lengths. Packed 48' (14.6m) per carton.



**PRODUCT**  
ENVIRONMENTAL PROFILE

- This product meets the material restrictions of RoHS

---

### SPECIFICATIONS

#### GENERAL INFO

Available Colors:

5500BD3 - Ivory

5500BD3-WH - White

Product Series: 5500

Component Type: Raceway Base & Cover

#### LISTING AGENCIES/THIRD PARTY CERTIFICATIONS

RoHS: Yes

#### TECHNICAL INFORMATION

Material: Nonmetallic

Capacity: Multiple Channel