

### APPLICATIONS

The Mobern MFPEL Edge Lit LED Flat Panel is a cleanly designed, high brightness lighting panel, made with high performance LED chips. This panel is ideal for replacing traditional recessed fluorescent fixtures and is simple to fit and install. The MFPEL Edge Lit LED Flat Panel is a perfect choice for many applications including commercial, industrial, healthcare, hospitality and many more.

### FEATURES & BENEFITS

- ◆ Ultra thin LED panel light made from high-grade aluminum
- ◆ Environmentally friendly-mercury free
- ◆ Rated at 50,000 hrs of L70 LED life
- ◆ CRI >80
- ◆ 0-10 Volt dimmable 120-277V
- ◆ High efficacy and UV and IR Free
- ◆ RoHS Compliant
- ◆ 5 Year Warranty
- ◆ PF >99
- ◆ cULus Listed for damp locations
- ◆ DLC listed for certain models

### SPECIFICATIONS

Housing is white aluminum that is sealed and Non-IC type fixture. Lens is evenly diffused frosted material. The driver is a Class 2 compliant design, featuring low voltage, limited power and is capable of 0-10V dimming as standard. Fixture is 80CRI minimum, multiple color temperatures, sizes and wattages are available. 5 year limited system warranty. Listed by and bears cULus label.



### ORDERING DATA

EXAMPLE: MFPEL22-LED35DMVWH40

Series		Type	Gear	Wattage/Lumens		Frame Color	Color Temp	Generation
MFPEL	14	1 x 4	LED	<b>1x4 only</b>		WH White	30 3000K	Blank
LED Slim	22	2 x 2		37 37 Watts	3580 Lumens 89 L/W		35 3500K	GEN2
Flat Panel	24	2 x 4		40 40 Watts	5035 Lumens 125 L/W		40 4000K	Generation 2
					<b>2x2 only</b>		50 5000K	(2x4 only)
				40 40 Watts	5000 Lumens 125 L/W			
				50 50 Watts	6250 Lumens 125 L/W			
					<b>2x4 only</b>			
						<b>Driver</b>		
						DMV 120-277VAC		
						Dimming Multivolt		
						0-10V		

**ACCESSORIES: Sold Separately**

**Surface Mounting Kits:  
(sold separately)**

- SMKT14-MFPEL - 1x4
- SMKT22-MFPEL - 2x2
- SMKT24-MFPEL - 2x4

**Hanging Kit:**

- A-MFPEL-Cable kit 35 inches
- aircraft cable kit

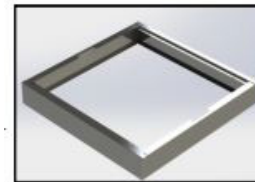
DLC Listed	
MFPEL14-LED37DMVWHxx	xx=30,35,40,50
MFPEL14-LED40DMVWHxx	xx=30,35,40,50
MFPEL22-LED40DMVWHxx	xx=30,40,50
MFPEL24-LED50DMVWHxx-GEN2	xx=35,40,50

**DIMENSIONS:**

- 1x4 - 300mm x 1200mm x 12mm + Driver (11.8" x 47.25" x 0.5")
- 2x2 - 600mm x 600mm x 12mm + Driver (23.625" x 23.625" x 0.5")
- 2x4 - 600mm x 1200mm x 12mm + Driver (23.625" x 47.25" x 0.5")
- Driver - 10.625" x 3.0" x 1.7"

Consult for other options.

**Wiring Diagram**



Shroud for surface mounting

Not all color temperatures and wattages are stocked.  
Dimensions and specifications subject to change without notice.  
Consult factory for EM



CAT#	
JOB NAME	
TYPE	