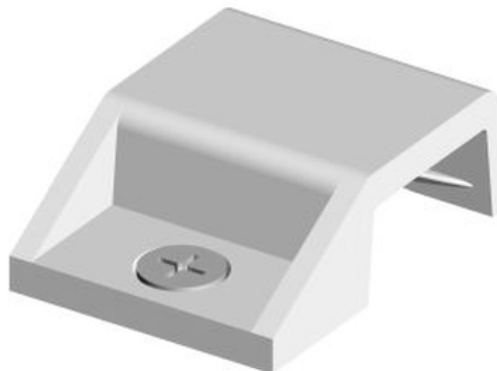




Job Name:		Item Number:	
Specifier Name:		Sales Agency:	
Specifier Contact:		Agency Contact:	
Fixture Type:		Comments:	
Quantity:		Approval:	

## Lx Track Mounting Clip



L: 1" W: 3/4" H: 11/32"

### Description

Polycarbonate track mounting clip easily snaps onto any point along 9435 track or 9443 track / fascia panel to secure to surface. Space clips according to weight of fixtures, to prevent track from sagging. Includes 3/8" long #4 screw.

### Specifications

Item Number	9438-12
Finish	Black
Dimensions	L: 1" W: 3/4" H: 11/32"
Safety Listing	UL Listed for Dry Locations cUL Listed for Dry Locations cETL Listed for Dry Locations
Warranty	1-Year Warranty

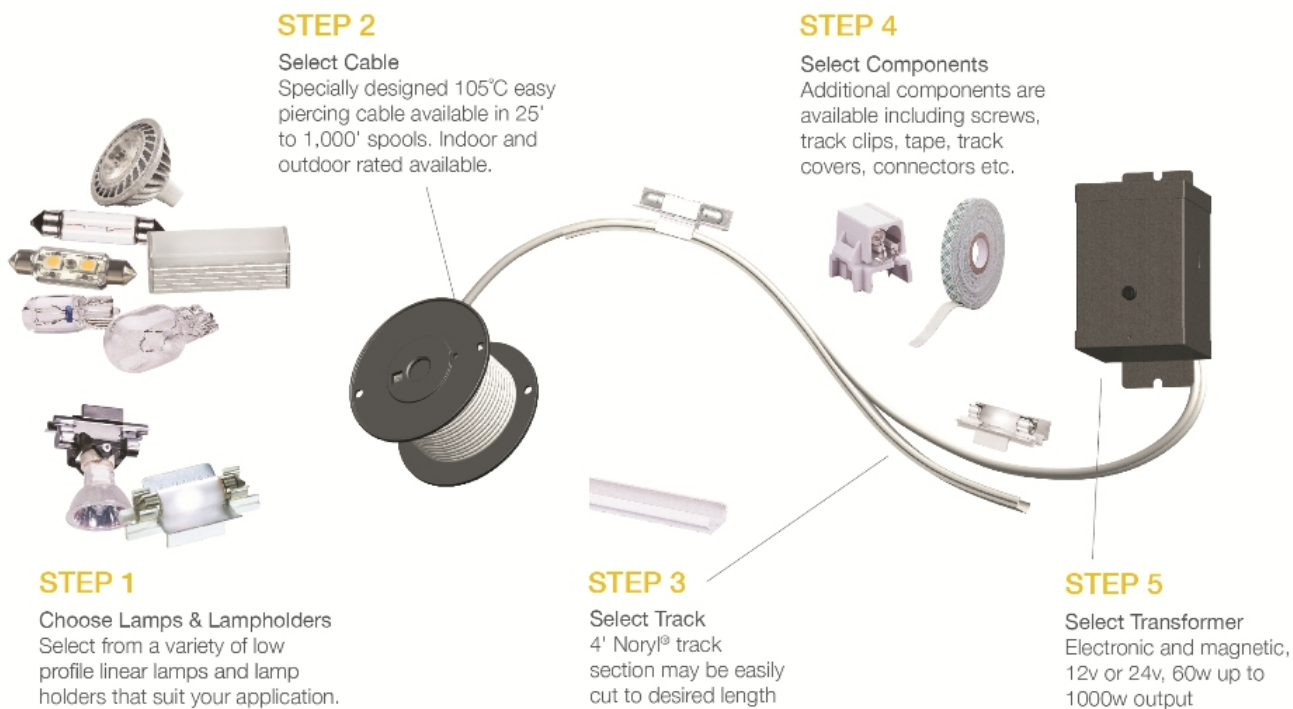
### Instruction Sheets

- English (HC-255)

### Shipping Information:

Package Type	Product #	Quantity	UPC	Length	Width	Height	Cube	Weight	UPS Ship
Individual	9438-12	1	785652943829	1	0.75	0.38	0	0.004	Yes
Master Pack		600	10785652943826	11.25	9.25	9.75	0.587	2.4	Yes

## Component Diagram:



**AMBIANCE**  
Lighting Systems

7400 Linder Ave. | Skokie, Illinois 60077 | 800-347-5483  
© 2013 Sea Gull Lighting LLC, a Generation Brands Company.