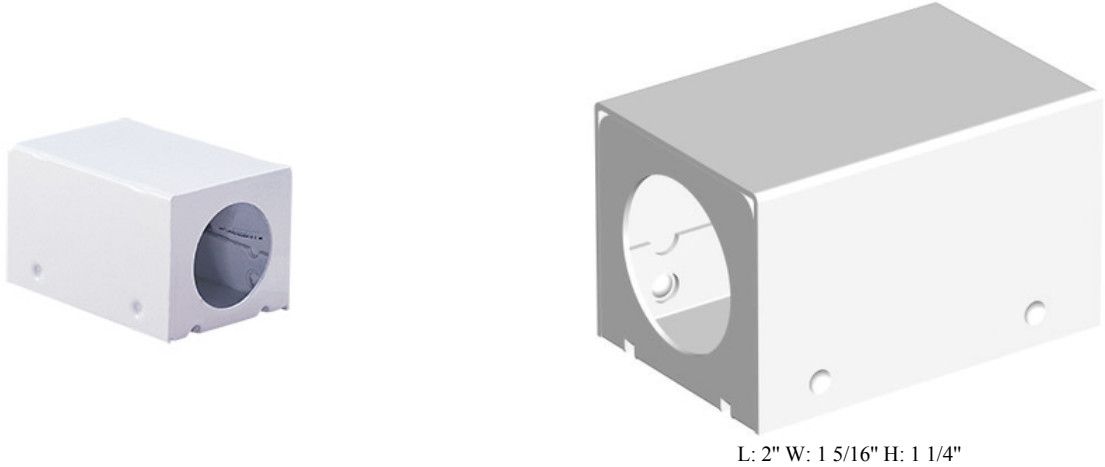


| | | | |
|--------------------|--|-----------------|--|
| Job Name: | | Item Number: | |
| Specifier Name: | | Sales Agency: | |
| Specifier Contact: | | Agency Contact: | |
| Fixture Type: | | Comments: | |
| Quantity: | | Approval: | |

Conduit to Lx Wiring Compartment



Description

Steel wiring compartment with hole for 1/2" conduit connector and snap on cover and opening for Lx track and cable. Includes terminal block for connection between transformer extension wire (i.e. Bx or Romex) and low voltage cable. Maximum wattage allowed for 10/2 AWG: 300w at 12V; 500w at 24V Max. UL and C-UL listed.

Specifications

| | |
|----------------|--|
| Item Number | 9481-15 |
| Finish | White |
| Dimensions | L: 2" W: 1 5/16" H: 1 1/4" |
| Safety Listing | UL Listed for Dry Locations cUL Listed for Dry Locations cETL Listed for Dry Locations |
| Warranty | 1-Year Warranty |

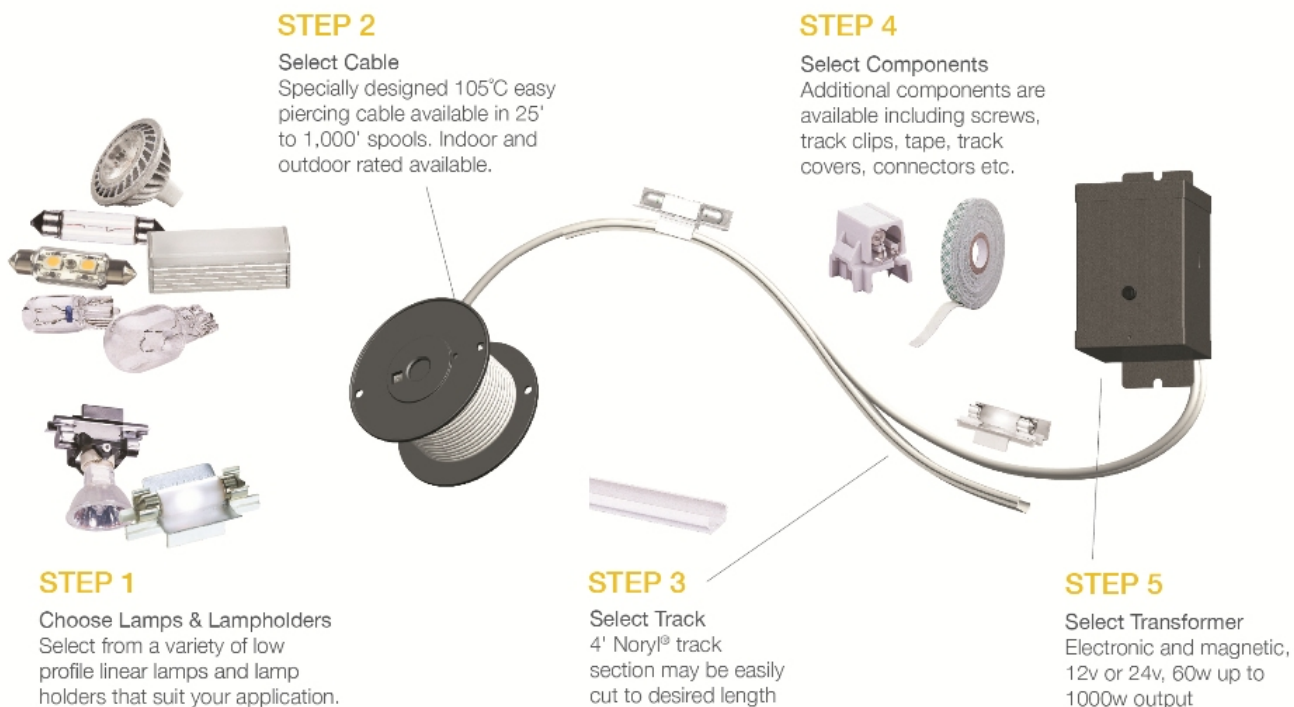
Instruction Sheets

- English (HC-203)

Shipping Information:

| Package Type | Product # | Quantity | UPC | Length | Width | Height | Cube | Weight | UPS Ship |
|-----------------|-----------|----------|----------------|--------|-------|--------|-------|--------|----------|
| Individual | 9481-15 | 1 | 785652948152 | 3 | 2 | 1.5 | 0.005 | 0.1 | Yes |
| Master Pack | | 10 | 10785652948159 | 8 | 4.25 | 4 | 0.079 | 1.7 | Yes |
| Shipping Master | | 100 | 20785652948156 | 21.5 | 9 | 9 | 1.008 | 17.7 | Yes |

Component Diagram:



7400 Linder Ave. | Skokie, Illinois 60077 | 800-347-5483
© 2013 Sea Gull Lighting LLC, a Generation Brands Company.