

Handheld wireless configuration tool enables contractors and end-users to customize sensor control settings for RAIL High Bay fixtures with the simple click of a button - no ladders required.

Color: White

Weight: 0.0 lbs

Project:

Type:

Prepared By:

Date:

## Technical Specifications

### Other

#### Description:

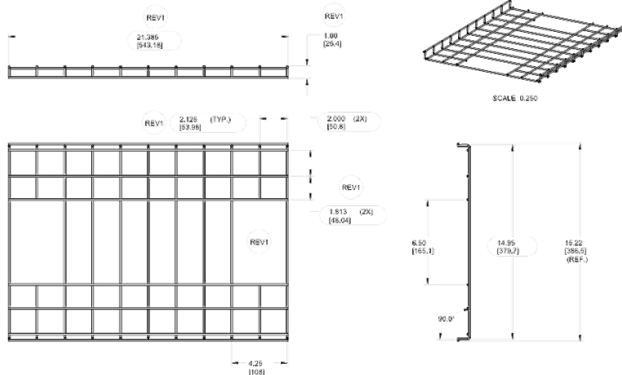
Wire guard for RAIL 20" with clip screws.

### Construction

#### Finish:

Our environmentally friendly polyester powder coatings are formulated for high-durability and long-lasting color, and contains no VOC or toxic heavy metals.

## Dimensions



## Features

High/low modes fully adjustable from 0 to 10V

Time delay dims light 30 seconds to 30 minutes after detecting motion

Optional cutoff delay turns fixture off after a preset period of vacancy

Configure control settings to react to ambient light levels

Ramp up and fade down times can be customized

Save up to six profiles for custom control settings