

TRACK L 33W HIGH CRI



CRI^{SP}



33.8W REPLACES



**39W
CMH**

80% Energy Savings

- ⌚ Exceptional color rendering CRI 90
- ⌚ 2300 lumen output replaces 39W CMH
- ⌚ Field interchangeable lens comes in NF & FL standard
- ⌚ Sleek design, integrated driver
- ⌚ Tight binning: 3-step Macadam ellipse



LM 79

LM 80

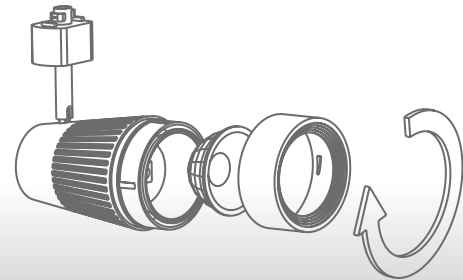
TM 21



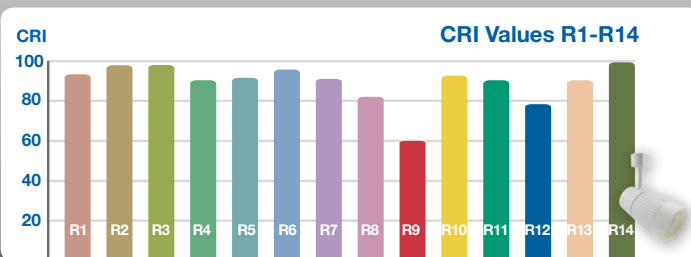
TRACK PRODUCT FEATURES

Interchangeable Lens Options

The Track ASPIRE L comes with one NF 25° and one FL 38° optic that can be easily switched out by removing the lens cap. This track head also allows for 350° horizontal and 90° vertical adjustment, making it suitable for designer friendly applications.



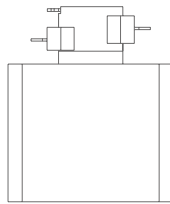
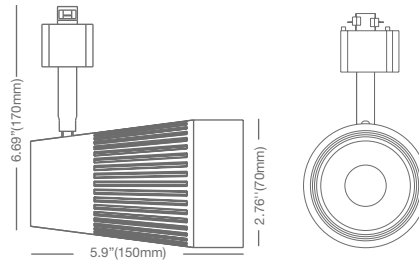
High CRI



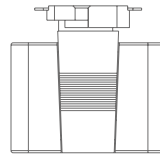
The CRI^{SP} SERIES 33W TRACK fixture features a typical CRI 90, R9 60 and R13 90, providing crisp and vibrant colors across the whole spectrum. Its exceptional R9-R14 values (R9 & R13) provide redder reds, natural looking skin tones and whiter whites.

TRACK L 33W HIGH CRI

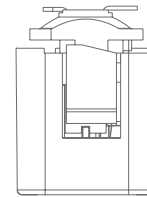
Voltage: 120V
Dimmable: Yes***
PF: 0.9
Lifetime: 40,000 hrs
Weight: 0.52lb / 236g
Track type:



H-Halo Track



J- Juno Track
For use with single and two-circuit track applications



L- Lightolier Track (MTO)
For use with single and two-circuit track applications

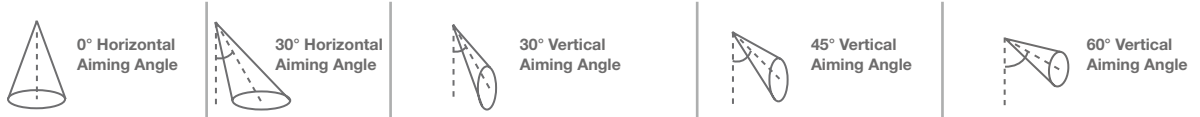
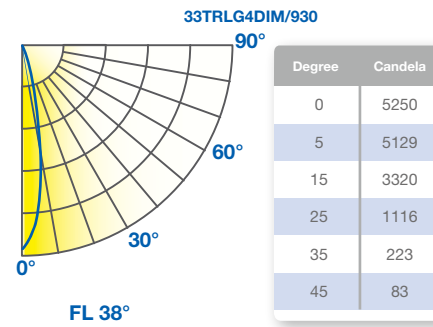
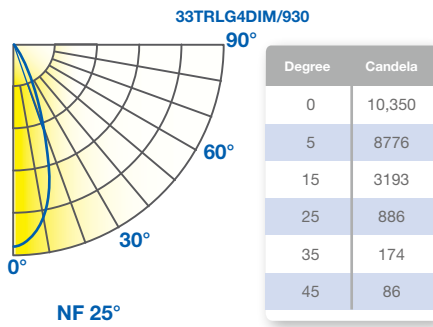
SPECIFICATIONS*

Model	Product	Power (W)	CCT	CRI (typ.)	R9 / R13 (typ.)	Lumens (lm)	LPW	Beam Angle	CBCP (cd)
33TRLG4DIM/927/W/H	97623	33.8	Warm White 2700K	90	60 / 90	2200	65	25°/38°	10,000/5150
33TRLG4DIM/930/W/H	97629	33.8	Warm White 3000K	90	60 / 90	2300	68	25°/38°	10,350/5250
33TRLG4DIM/927/W/J	97624	33.8	Warm White 2700K	90	60 / 90	2200	65	25°/38°	10,000/5150
33TRLG4DIM/930/W/J	97630	33.8	Warm White 3000K	90	60 / 90	2300	68	25°/38°	10,350/5250
33TRLG4DIM/927/B/H •	97626	33.8	Warm White 2700K	90	60 / 90	2200	65	25°/38°	10,000/5150
33TRLG4DIM/930/B/H •	97632	33.8	Warm White 3000K	90	60 / 90	2300	68	25°/38°	10,350/5250
33TRLG4DIM/927/B/J •	97627	33.8	Warm White 2700K	90	60 / 90	2200	65	25°/38°	10,000/5150
33TRLG4DIM/930/B/J •	97633	33.8	Warm White 3000K	90	60 / 90	2300	68	25°/38°	10,350/5250

* Specification data is preliminary and may be subject to change
 • Black finish

TRACK L 33W HIGH CRI

PHOTOMETRY



33TRLG4DIM/930
Narrow Flood: 25°
CBCP: 10,350

D	FC	L	W	FC	L	W	D	FC	X	L	W	FC	X	L	W	D	FC	X	L	W
6	288	2.2	2.2	187	3.1	2.6	3	144	5.2	5.1	2.2	407	3	2.4	1.6	6	187	3.5	3.1	2.6
8	162	3.0	3.0	105	4.1	3.5	4	81	6.9	6.9	3.0	229	4	3.2	2.1	8	105	4.6	4.1	3.5
10	104	3.7	3.7	67	5.2	4.3	5	52	8.7	8.6	3.7	146	5	4.0	2.6	10	67	5.8	5.2	4.3
12	72	4.5	4.5	47	6.2	5.2	6	36	10.4	10.3	4.5	102	6	4.7	3.2	12	47	6.9	6.2	5.2
14	53	5.2	5.2	34	7.2	6.0	7	26	12.1	12.0	5.2	75	7	5.5	3.7	14	34	8.1	7.2	6.0

33TRLG4DIM/930
Flood: 38°
CBCP: 5250

D	FC	L	W	FC	L	W	D	FC	X	L	W	FC	X	L	W	D	FC	X	L	W
4	328	2.5	2.5	213	3.5	2.9	2	164	3.5	7.4	2.5	464	2	2.8	1.8	4	213	2.3	3.5	2.9
6	146	3.8	3.8	95	5.3	4.3	3	73	5.2	11.0	3.8	206	3	4.3	2.7	6	95	3.5	5.3	4.3
8	82	5.0	5.0	53	7.0	5.8	4	41	6.9	14.7	5.0	116	4	5.7	3.5	8	53	4.6	7.0	5.8
10	53	6.3	6.3	34	8.8	7.2	5	26	8.7	18.4	6.3	74	5	7.1	4.4	10	34	5.8	8.8	7.2
12	36	7.5	7.5	24	10.6	8.7	6	18	10.4	22.1	7.5	52	6	8.5	5.3	12	24	6.9	10.6	8.7

Notes and Definitions:

D=Distance to floor or wall
 FC=Footcandles on floor or wall at center beam location
 L=Beam length in feet
 W=Beam width in feet
 X=In vertical aiming applications, (X) is the distance down to the center beam location
 For other CCT use the following multipliers: 2700K. 95, 4000K 1.08

