

Test Block Bypass MTBL/MTBPL Series

200 Amp/10K AIC/240 Volt Self-Contained Meter-Main Load-Center



U224MTBL



U224MTBPL

APPLICATION

- Single meter position
- Designed to receive watthour meters that meet ANSI C12.10
- Overhead or underground feed
- Surface mount

CONSTRUCTION

- Type 3R construction
- Combination meter/main load center – safety socket with factory installed test/bypass facilities.¹ Main disconnecting device available as circuit breaker or fusible pullout.
- “T” fuses are included
- Separate sealable utility compartment
- Padlock provision on load side hinged door
- Snap type sealing ring included
- 5th jaw provision at nine o'clock – U/224MTBL and U224MTBPL only
- Ring style

STANDARDS

- UL 67 listed, complies with ANSI C12.7

FINISH

- ANSI 61 gray acrylic electrocoat finish

ACCESSORIES

- Ground bar kit — catalog #50011A
- Fifth jaw kit — catalog #50371
- AW hubs
- Screw type sealing ring — catalog #25016D
- Steel or clear lexan covers for socket opening
- Siemens filler plate #25319

Overhead/Underground-Surface Mount

CATALOG NUMBER	MAIN DISCONNECT	BRANCH CIRCUITS	AIC RATING	AMPACITY MAX. CONT.	VOLTAGE	SERVICE TYPE	NUMBER OF JAWS	HUB PROV.	CONDUCTOR LUG RANGE		NEUTRAL CONDUCTOR	FIGURE NUMBER	DIMENSIONS (INCHES)		
									PHASE LINE	CONDUCTOR LOAD			HEIGHT (H)	WIDTH (W)	DEPTH (D)
U224MTBL	(1) 200A 2P CB	20/40	10K*	200	120/240	1Ø 3W	4	AW	6 AWG - 250 kcmil	MAIN CIRCUIT BREAKER	6 AWG - 250 kcmil	Fig. 1	30	27	6
U225MTBL	(1) 200A 3P CB	24/42	10K*	200	240**	3Ø 3W	5	AW	6 AWG - 250 kcmil	MAIN CIRCUIT BREAKER	6 AWG - 250 kcmil	Fig. 1	32	27	6
U227MTBL	(1) 200A 3P CB	24/42	10K*	200	208/120 & 240/120	3Ø 4W	7	AW	6 AWG - 250 kcmil	MAIN CIRCUIT BREAKER	6 AWG - 250 kcmil	Fig. 1	32	27	6
U224MTBPL	(1) 200A 2P pullout	20/40	100K	200	120/240	1Ø 3W	4	AW	6 AWG - 250 kcmil	MAIN PULLOUT	6 AWG - 250 kcmil	Fig. 1	30	27	6
U225MTBPL	(1) 200A 3P pullout	24/42	100K	200	240**	3Ø 3W	5	AW	6 AWG - 250 kcmil	MAIN PULLOUT	6 AWG - 250 kcmil	Fig. 1	32	27	6
U227MTBPL	(1) 200A 3P pullout	24/42	100K	200	208/120 & 240/120	3Ø 4W	7	AW	6 AWG - 250 kcmil	MAIN PULLOUT	6 AWG - 250 kcmil	Fig. 1	32	27	6

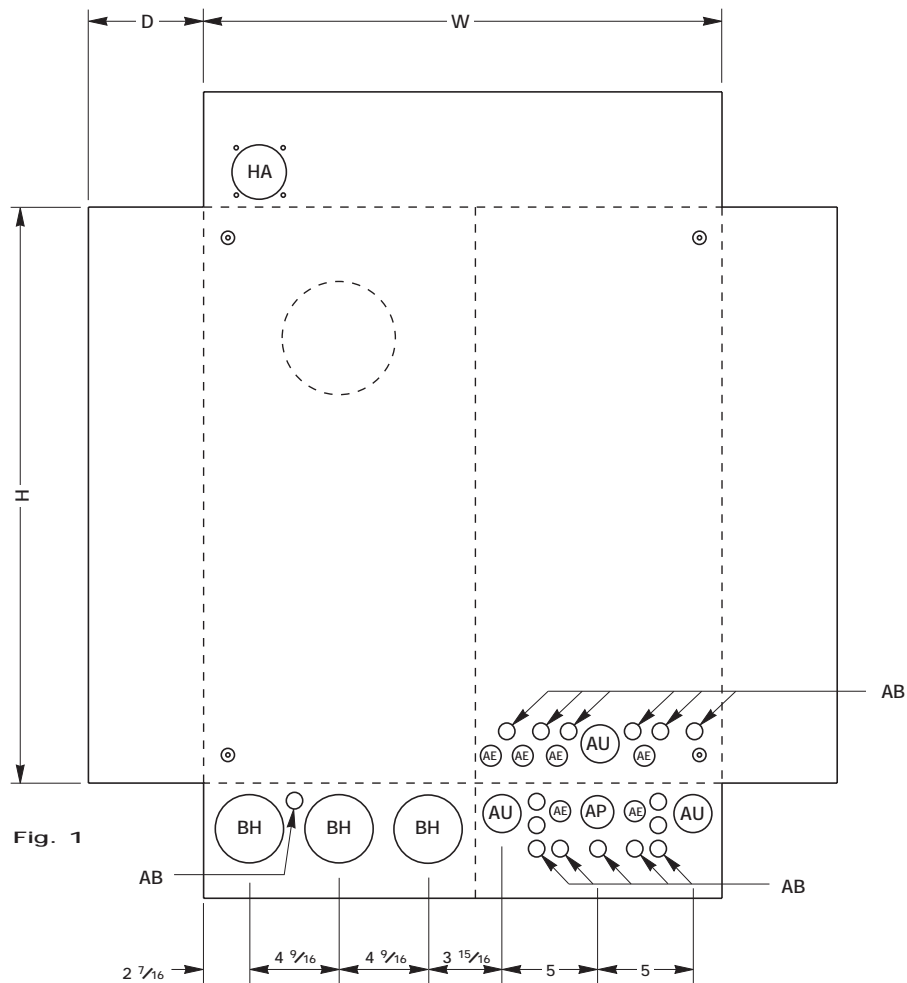
¹ = 60-in. lbs torque recommended for circuit-closing nut

* Available in 42K on request

** For 208/120V, 1Ø 3W systems, order 4-jaw unit and a 5th jaw kit

Note: For branch circuits, order type “OP” breaker 15amp-100amp

For Safety Socket Bypass instructions see page 74.



Knockouts — Conduit Sizes

AB = 1/2"
 AE = 3/4" - 1/2"
 AP = 1 1/4" - 1" - 3/4" - 1/2"
 AU = 1 1/2" - 1 1/4" - 1" - 3/4"
 BH = 3" - 2 1/2"
 HA = AW HUB