

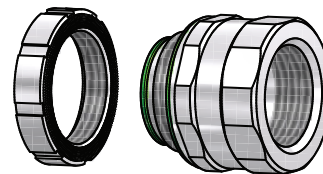
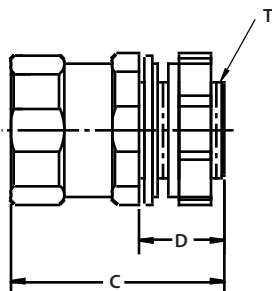
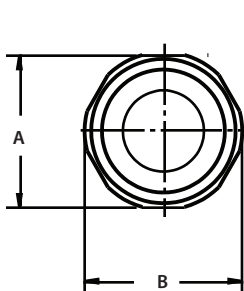


AH Series Industrial SPEC-grade Alloy Steel Hubs

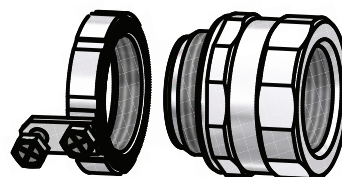
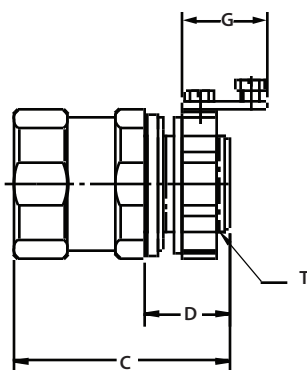
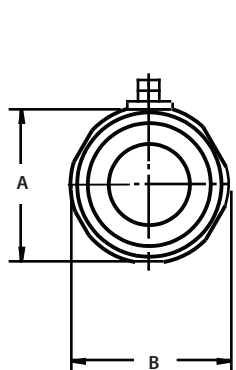
Manufactured in the USA

For Use with Rigid/IMC Conduit Hub

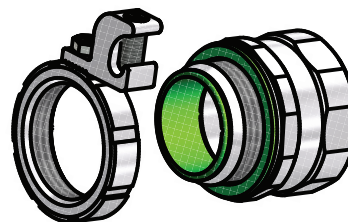
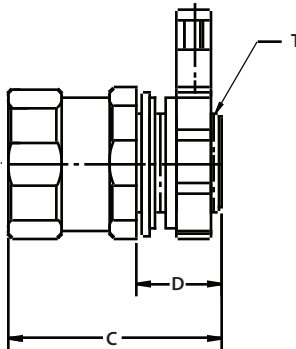
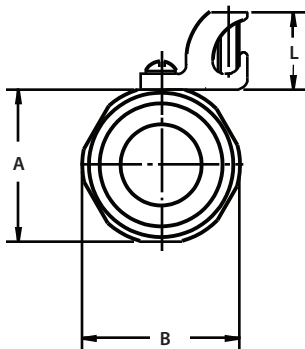
Standard Hub with Locknut



Ground Hub with Ground Tab Screw



Ground Hub with Lay-In Lug



INDUSTRIAL SPEC-grade



NEMA Rated Types
3, 3R, 3, 4X, 5, 12, 13

UL 514B
NEMA Standard FB1
Federal Standard A-A-50553
Made in the USA Certified

AMFICO Hub Dimensions

Trade Size"	A (hex)	B Hub Ø	C	D	G	L* Lug Hgt.	T (NPS Thread Size)
1/2"	1 -1/8"	1-3/16"	1-1/4"	3/8"	13/16"	CF	1/2"-14 NPS
3/4"	1-11/32"	1-13/32"	1-1/4"	3/8"	13/16"	CF	3/4"-14 NPS
1"	1-5/8"	1-11/16"	1-9/16"	1/2"	13/16"	CF	1"-11.5 NPS
1 1/4"	2-1/32"	2-1/8"	1-3/4"	1/2"	13/16"	CF	1 1/4"-11.5 NPS
1 1/2"	2-3/16"	2-29/32"	2"	9/16"	13/16"	CF	1 1/2"-11.5 NPS
2"	2-21/32"	2-7/8"	2-1/16"	5/8"	13/16"	CF	2"-11.5 NPS
2 1/2"	3-9/32"	3-13/32"	2-1/2"	1"	13/16"	CF	2 1/2"-8 NPS
3"	3-29/32"	4"	2-9/16"	1"	13/16"	CF	3"-8 NPS
3 1/2"	4-13/32"	4-9/16"	2-9/16"	1"	13/16"	CF	3 1/2"-8 NPS
4"	4-29/32"	5-3/32"	2-9/16"	1"	13/16"	CF	4"-8 NPS

* Lug Height will vary based on the size lug chosen. Consult factory for lug height



Trade Size "	Catalog Number	Ground Options *	Trade Size "	Catalog Number	Grounding Options*
1/2	AH50B	Hub with TruetTIGHT Locknut	2	AH200B	Hub with TruetTIGHT Locknut
1/2	AH50B-GL	#14-#4 Lay-In Ground Lug	2	AH200B-GL	#14-#4 Lay-In Ground Lug
1/2	AH50B-GS	Ground Screw Tab on Locknut	2	AH200B-GS	Ground Screw Tab on Locknut
1/2	AH50B-GL-GS **	Dual Grounding- #14-#4 External Lay-In Lug and Ground Screw Tab	2	AH200B-GL-GS **	Dual Grounding- #14-#4 External Lay-In Lug and Ground Screw Tab
1/2	AH50LN	TrueTIGHT Locknut	2	AH200LN	TrueTIGHT Locknut
1/2	AH50LN-GL	TrueTIGHT Locknut with #14-#4 Lay-In Ground Lug	2	AH200LN-GL	TrueTIGHT Locknut with #14-#4 Lay-In Ground Lug
1/2	AH50LN-GS	TrueTIGHT Locknut with Ground Screw Tab	2	AH200LN-GS	TrueTIGHT Locknut with Ground Screw Tab
3/4	AH75B	Hub with TruetTIGHT Locknut	2 1/2	AH250B	Hub with TruetTIGHT Locknut
3/4	AH75B-GL	#14-#4 Lay-In Ground Lug	2 1/2	AH250B-GL	#8-1/0 Lay-In Ground Lug
3/4	AH75B-GS	Ground Screw Tab on Locknut	2 1/2	AH250B-GS	Ground Screw Tab on Locknut
3/4	AH75B-GL-GS **	Dual Grounding- #14-#4 External Lay-In Lug and Ground Screw Tab	2 1/2	AH250B-GL-GS **	Dual Grounding- #8-1/0 External Lay-In Lug and Ground Screw Tab
3/4	AH75LN	TrueTIGHT Locknut	2 1/2	AH250LN	TrueTIGHT Locknut
3/4	AH75LN-GL	TrueTIGHT Locknut with #14-#4 Lay-In Ground Lug	2 1/2	AH250LN-GL	TrueTIGHT Locknut with #8-1/0 Lay-In Ground Lug
3/4	AH75LN-GS	TrueTIGHT Locknut with Ground Screw Tab	2 1/2	AH250LN-GS	TrueTIGHT Locknut with Ground Screw Tab
1	AH100B	Hub with TruetTIGHT Locknut	3	AH300B	Hub with TruetTIGHT Locknut
1	AH100B-GL	#14-#4 Lay-In Ground Lug	3	AH300B-GL	#8-1/0 Lay-In Ground Lug
1	AH100B-GS	Ground Screw Tab on Locknut	3	AH300B-GS	Ground Screw Tab on Locknut
1	AH100B-GL-GS **	Dual Grounding- #14-#4 External Lay-In Lug and Ground Screw Tab	3	AH300B-GL-GS **	Dual Grounding- #8-1/0 External Lay-In Lug and Ground Screw Tab
1	AH100LN	TrueTIGHT Locknut	3	AH300LN	TrueTIGHT Locknut
1	AH100LN-GL	TrueTIGHT Locknut with #14-#4 Lay-In Ground Lug	3	AH300LN-GL	TrueTIGHT Locknut with #8-1/0 Lay-In Ground Lug
1	AH100LN-GS	TrueTIGHT Locknut with Ground Screw Tab	3	AH300LN-GS	TrueTIGHT Locknut with Ground Screw Tab
1 1/4	AH125B	Hub with TruetTIGHT Locknut	3 1/2	AH350B	Hub with TruetTIGHT Locknut
1 1/4	AH125B-GL	#14-#4 Lay-In Ground Lug	3 1/2	AH350B-GL	#8-1/0 Lay-In Ground Lug
1 1/4	AH125B-GS	Ground Screw Tab on Locknut	3 1/2	AH350B-GS	Ground Screw Tab on Locknut
1 1/4	AH125B-GL-GS **	Dual Grounding- #14-#4 External Lay-In Lug and Ground Screw Tab	3 1/2	AH350B-GL-GS **	Dual Grounding- #8-1/0 External Lay-In Lug and Ground Screw Tab
1 1/4	AH125LN	TrueTIGHT Locknut	3 1/2	AH350LN	TrueTIGHT Locknut
1 1/4	AH125LN-GL	TrueTIGHT Locknut with #14-#4 Lay-In Ground Lug	3 1/2	AH350LN-GL	TrueTIGHT Locknut with #8-1/0 Lay-In Ground Lug
1 1/4	AH125LN-GS	TrueTIGHT Locknut with Ground Screw Tab	3 1/2	AH350LN-GS	TrueTIGHT Locknut with Ground Screw Tab
1 1/2	AH150B	Hub with TruetTIGHT Locknut	4	AH400B	Hub with TruetTIGHT Locknut
1 1/2	AH150B-GL	#14-#4 Lay-In Ground Lug	4	AH400B-GL	#8-1/0 Lay-In Ground Lug
1 1/2	AH150B-GS	Ground Screw Tab on Locknut	4	AH400B-GS	Ground Screw Tab on Locknut
1 1/2	AH150B-GL-GS **	Dual Grounding- #14-#4 External Lay-In Lug and Ground Screw Tab	4	AH400B-GL-GS **	Dual Grounding- #8-1/0 External Lay-In Lug and Ground Screw Tab
1 1/2	AH150LN	TrueTIGHT Locknut	4	AH400LN	TrueTIGHT Locknut
1 1/2	AH150LN-GL	TrueTIGHT Locknut with #14-#4 Lay-In Ground Lug	4	AH400LN-GL	TrueTIGHT Locknut with #8-1/0 Lay-In Ground Lug
1 1/2	AH150LN-GS	TrueTIGHT Locknut with Ground Screw Tab	4	AH400LN-GS	TrueTIGHT Locknut with Ground Screw Tab

* Additional Ground Options May Be Available Please Consult Factory

AMFICO Hub Spacing Chart

Recommended Spacing Between Conduit (inches)

Conduit Size	1/2"	3/4"	1"	1-1/4"	1-1/2"	2"	2-1/2"	3"	3-1/2"	4"
1/2"	1-5/16									
3/4"	1-7/16	1-17/32								
1"	1-9/16	1-11/16	1-13/16							
1-1/4"	1-25/32	1-29/32	2-1/32	2-1/4						
1-1/2"	1-7/8	1-31/32	2-1/8	2-11/32	2-13/32					
2"	2-5/32	2-9/32	2-13/32	2-5/8	2-23/32	3				
2-1/2"	2-7/16	2-17/32	2-11/16	2-29/32	2-31/32	3-9/32	3-19/32			
3"	2-23/32	2-27/32	2-31/32	3-3/16	3-9/32	3-9/16	3-29/32	4-3/16		
3-1/2"	3	3-1/8	3-1/4	3-15/32	3-9/16	3-27/32	4-3/16	4-15/32	4-3/4	
4"	3-9/32	3-3/8	3-17/32	3-3/4	3-13/16	4-1/8	4-7/16	4-3/4	5-1/32	5-9/32

Hub OD

1-3/16	1.188
1-13/32	1.406
1-11/16	1.688
2-1/8	2.125
2-9/32	2.281
2-7/8	2.875
3-13/32	3.406
4	4
4-9/16	4.563
5-3/32	5.094

Low Profile Provides Exceptional Conduit Spacing

(a) Dimensions in top row box (blue box) are centers for conduits of same size.

Example: 3" conduit may be spaced 4-3/16".

(b) Dimensions in white squares are the centers of conduits not of the same size.

Example: 3" & 2" conduit may be spaced at 3-9/16".



UL
LISTED
UL 514B
NEMA Standard FB1
Federal Standard A-A-50553
Made in the USA Certified