

FEATURES & SPECIFICATIONS

INTENDED USE — The CLX is a linear lighting solution that is available in multiple lengths, lumen packages and distributions. Designed for versatility, the CLX can address virtually any indoor lighting need. The CLX is also offered in standard and high efficacy configurations and capable of being continuous row mounted or installed as a stand-alone fixture. Ideal for uplight and downlight in commercial, retail, manufacturing, warehouse, and display applications. **Certain airborne contaminants can diminish the integrity of acrylic and/or polycarbonate.** [Click here for Acrylic-Polycarbonate Compatibility table for suitable uses.](#)

CONSTRUCTION — Channel and cover are formed from code-gauge cold-rolled steel. Housing and lens endcaps are injection molded plastic to provide a more architectural look and feel. The endcaps come standard with a 7/8" knock out for continuous mounting but can be ordered without.

Finish: Paint options include high-gloss, baked white polyester (WH), galvanized (GALV), matte black (MB) and smoke gray (SKGY). Five-stage iron phosphate pre-treatment ensures superior paint adhesion and rust resistance.

OPTICS — Offered in lens and less lens configurations. Provides a choice of optical distributions including, wide, narrow, and aisle.

ELECTRICAL — Utilizes high-output LEDs integrated on a two-layer circuit board, ensuring cool-running operation. Optional internal pluggable wiring harness for reduced labor cost in row mounting applications. (See PLR_ordering information on page 15.) Electronic LED driver is multi-volt input and 0-10V dimming standard (see Operational Data on page 12 for actual wattage consumption). This fixture is designed to withstand a maximum line surge of 2.5kV at 0.75kA combination wave for indoor locations, for applications requiring higher level of protection additional surge protection must be provided.

Enabled with Atrius™ - The CLX is enabled with Atrius™, making it part of the Atrius™ Sensory Network and ready to deliver valuable data and connectivity to the Atrius™ Platform. For more information concerning Atrius™ solutions, please refer to www.acuitybrands.com/atrus.

L70>100,000 hours at 25°C.

LEDs provide nominal 80 CRI or 90CRI at 3000 K, 3500 K, 4000 K, or 5000 K.

Lumen output up to 2,500 lumens per foot.

INSTALLATION — Fixture may be ceiling or wall mounted (with or without THCLX hanger or angle mounted with CLXANGBRT), pendant or stem mounted with appropriate mounting options.

LISTINGS — CSA certified to US and Canadian safety standards. For use in damp locations between -4°F (-20°C) and 104°F (40°C). Optional High Ambient (HA) ranging to 122°F (50°C) available on certain lumen packages (See ambient temperature chart for additional information).

DesignLights Consortium® (DLC) Premium qualified product and DLC qualified product. Not all versions of this product may be DLC Premium qualified or DLC qualified. Please check the DLC Qualified Products List at www.designlights.org/QPL to confirm which versions are qualified.

WARRANTY — 5-year limited warranty. Complete warranty terms located at: www.acuitybrands.com/CustomResources/Terms_and_conditions.aspx

Note: Actual performance may differ as a result of end-user environment and application. All values are design or typical values, measured under laboratory conditions at 25°C. Specifications subject to change without notice.

Stock configurations are offered for shorter lead times:

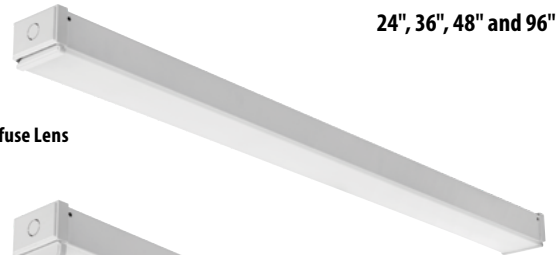
Stock Part Number	UPC	DLC QPL Product ID	DLC Premium
CLX L48 3000LM SEF FDL MVOLT GZ10 40K 80CRI WH	00191723525816	PJANKZR4	Yes
CLX L48 3000LM SEF FDL MVOLT GZ10 50K 80CRI WH	00191723525885	PKW32VKL	Yes
CLX L48 5000LM SEF FDL MVOLT GZ10 40K 80CRI WH	00191723525939	P77I8Z20	Yes
CLX L48 5000LM SEF FDL MVOLT GZ10 50K 80CRI WH	00191723525908	P8A42C1H	Yes
CLX L96 6000LM SEF FDL MVOLT GZ10 40K 80CRI WH	00191723525861	PPFTGRBV	Yes
CLX L96 6000LM SEF FDL MVOLT GZ10 50K 80CRI WH	00191723525915	PW6250TE	Yes
CLX L96 10000LM SEF FDL MVOLT GZ10 40K 80CRI WH	00191723525922	PYK0C7EW	Yes
CLX L96 10000LM SEF FDL MVOLT GZ10 50K 80CRI WH	00191723525830	PKYPL35K	Yes
CLX L48 3000LM SEF RDL MVOLT GZ10 40K 80CRI WH	00191723525960	PJANKZR4	Yes
CLX L48 3000LM SEF RDL MVOLT GZ10 50K 80CRI WH	00191723525892	PKW32VKL	Yes
CLX L48 5000LM SEF RDL MVOLT GZ10 40K 80CRI WH	00191723525854	P77I8Z20	Yes
CLX L48 5000LM SEF RDL MVOLT GZ10 50K 80CRI WH	00191723525946	P8A42C1H	Yes
CLX L96 6000LM SEF RDL MVOLT GZ10 40K 80CRI WH	00191723525878	PPFTGRBV	Yes
CLX L96 6000LM SEF RDL MVOLT GZ10 50K 80CRI WH	00191723525823	PD0SSIAD	Yes
CLX L96 10000LM SEF RDL MVOLT GZ10 40K 80CRI WH	00191723525953	PYK0C7EW	Yes
CLX L96 10000LM SEF RDL MVOLT GZ10 50K 80CRI WH	00191723525847	PKYPL35K	Yes

Catalog Number
Notes
Type

LED Linear

CLX

24", 36", 48" and 96" Lengths



Flat Diffuse Lens



Round Diffuse Lens



Wide Diffuse Lens



A+ Capable Luminaire

This item is an A+ capable luminaire, which has been designed and tested to provide consistent color appearance and out-of-the-box control compatibility with simple commissioning.

- All configurations of this luminaire meet the Acuity Brands' specification for chromatic consistency
- This luminaire is part of an A+ Certified solution for nLight® or XPoint™ Wireless control networks marked by a **shaded background***

To learn more about A+, visit www.acuitybrands.com/aplus.

*See ordering tree for details

CLX LED Linear

ORDERING INFORMATION

Lead times will vary depending on options selected. Consult with your sales representative.

Example: CLX L48 5000LM SEF WDL MVOLT GZ10 40K 80CRI WH

Series	Length	Nominal lumens	Performance package	Louver	Lens
CLX LED linear	L24 24" ^{11,2,3}	1500LM 1,500 lumens	SEF Standard efficiency ⁶	(Blank) Less louver	L/Lens Less lens ¹
		2000LM 2,000 lumens	HEF Premium efficiency	SBLW Straight blade louver, white ⁷	FDL Flat diffuse ^{1,8,9}
		2500LM 2,500 lumens		SBLMB Straight blade louver, matte black ⁷	RDL Round diffuse ^{1,8,9}
		3500LM 3,500 lumens		SBLGV Straight blade louver, galvanized ⁷	WDL Wide diffuse ^{8,9}
		4500LM 4,500 lumens		SBLSKGY Straight blade louver, smoke gray ⁷	
	5000LM 5,000 lumens ^{4,5}				
	L36 36" ^{11,3}	2250LM 2,250 lumens			
		3000LM 3,000 lumens			
		3750LM 3,750 lumens			
		5250LM 5,250 lumens			
		7500LM 7,500 lumens ^{4,5}			
	L48 48"	3000LM 3,000 lumens			
		4000LM 4,000 lumens			
		5000LM 5,000 lumens			
		7000LM 7,000 lumens ³			
		10000LM 10,000 lumens ^{1,3,5}			
L96 96"	6000LM 6,000 lumens				
	8000LM 8,000 lumens				
	10000LM 10,000 lumens				
	14000LM 14,000 lumens ^{3,5}				
	20000LM 20,000 lumens ^{1,3,5}				

Distribution	Voltage	Driver ¹⁴	Color temperature	Coloring rendering index
(Blank) General	MVOLT 120-277V ¹¹	277 277V	30K 3000 K	80CRI 80 CRI
ND Narrow ^{9,10}	120 120V	347 347V ^{12,13}	35K 3500 K	90CRI 90 CRI
WD Wide ^{9,10}	208 208V	480 480V ^{12,13}	40K 4000 K	
AD2 Aisle, 24° off center ^{9,10}	240 240V		50K 5000 K	

Options	Finish
PS1050 Emergency battery pack, 10W, non-CEC compliant ^{3,13,17,18,19}	WH White
E10WLCP Emergency battery pack, 10W Linear Constant Power, CA Title 20 compliant ^{3,13,17,18,19}	GALVW Galvanized with white lens end caps
BGTD Generator transfer device, not available with PS1050 ^{13,17,20}	GALVB Galvanized with black lens end caps
OCS 5', 18/3 Reloc selectable One Pass cable ¹⁷	MB Matte black
HA High ambient, for use in ambient temperatures up to 50°C	SKGYW Smoke gray with white lens end caps
EPNKO Decorative endplate, no knock out ²¹	SKGYB Smoke gray with black lens end caps
OUTCTR Wiring leads pulled through back center of fixture ²²	
OUTEND Wiring leads pulled through end of fixture ²²	
CS1W Straight blade plug, 120V ^{11,17}	
CS3W NEMA twist-lock plug, 120V ^{11,17}	
CS7W Straight blade plug, 277V ^{11,17}	
CS11W NEMA twist-lock plug, 277V ^{11,17}	
CS25W NEMA twist-lock plug, 347V ^{11,17}	
CS97W NEMA twist-lock plug, 480V ^{11,17}	
CS93W 600V SEOWW white cord, no plug (no voltage required)	
CS6G16STOWD5D 6' white cord, 16/5, no plug, includes low voltage dimming wires (no voltage required) ¹⁵	
PLR___ Plug-in wiring, see page 16 for ordering information	
PLR1LVG Plug-in wiring, low voltage dimming ²³	
RRL___ RELOC®-ready luminaire. See page 15 for ordering information	
SPD Surge protection device, provides up to 6kV protection ^{17,24}	
USPOM Assembled in the United States	
<u>Individual controls:</u> ²⁵	
MSD7 PIR integral occupancy sensor	
MSDPDT7 PDT 7 dual technology integral occupancy control	
MSD7ADC PIR integral occupancy sensor with automatic dimming control photocell	
MSDPDT7ADC PDT integral occupancy sensor with automatic dimming control photocell	
Xpoint™ Wireless: ²⁵	
XAD XPoint™ Wireless 0-10V relay, internal, lower max ambient	
XAD924 XPoint™ Wireless 0-10V relay, internal, lower max ambient with emergency relay (UL924 compliant)	
Enabled with Atrius™:	
AE1CD Atrius™ enabled, Visible Light Communication, Bluetooth (registered logo) beacons and network, digital driver ⁸	
nLight® Wired: ²⁵	
N100 nLight® without lumen management	
NES7 nLight® nES 7 PIR integral occupancy sensor ²⁶	
NESPDT7 nLight® nES PDT 7 dual technology integral occupancy control ²⁶	
NES7ADCX nLight® nES 7 ADCX PIR integral occupancy sensor with automatic dimming photocell ²⁶	
NESPDT7ADCX nLight® nES PDT 7 dual technology integral occupancy sensor with automatic dimming photocell ²⁶	
nLight® Wireless: ²⁵	
NLTAIR2 RES7 nLight® Generation 2 enabled PIR integral occupancy sensor with automatic dimming photocell ²⁷	
NLTAIR2 RES7PDT nLight AIR Generation 2 enabled dual technology integral occupancy sensor with automatic dimming photocell ²⁷	
NLTAIR2 RIO No sensor control ²⁷	

See Accessories and footnotes on next page



Accessories: Order as separate catalog number.			
ZACVH	Aircraft cable 120" (one pair)	THCLX ___	Tong hanger (Must specify color) (one pair) ²⁸
ZAC120	One adjustable aircraft cable with canopy 120"	CLXANGBKT ___	Angle bracket, (Must specify color) (one pair) ²⁸
ZACFP120	One adjustable aircraft cable with feed (3 conductor) and canopy, 120"	HC36	Hanger chain, 36" (one pair)
ZACFPD120	One adjustable aircraft cable with feed (5 conductor) and canopy 120"	LSXR	Sensor Switch ® LSXR occupancy sensor
ZAC240	One adjustable aircraft cable with canopy 240"	NPP16D	nLight® switching/dimming module
ZACFP240	One adjustable aircraft cable with feed (3 conductor) and canopy, 240"	NPP16DER	nLight® switching/dimming module with emergency relay
ZACFPD240	One adjustable aircraft cable with feed (5 conductor) and canopy 240"	XPA CMRBO	XPoint™ Wireless 0-10V relay, external, 55°C max ambient
SQ_	Stem kit, 2" increments up to 48"	CLXRW24 ___	Wide decorative 24" reflector, (Must specify color) ²⁹
		CLXRW36 ___	Wide decorative 36" reflector, (Must specify color) ²⁹
		CLXRW48 ___	Wide decorative 48" reflector, (Must specify color) ²⁹
		CLXRW96 ___	Two wide decorative 48" reflectors, (Must specify color) ²⁹
		CLXRWU24 ___	Wide decorative 24" reflector with uplight, (Must specify color) ²⁹
		CLXRWU36 ___	Wide decorative 36" reflector with uplight, (Must specify color) ²⁹
		CLXRWU48 ___	Wide decorative 48" reflector with uplight, (Must specify color) ²⁹
		CLXRWU96 ___	Two wide decorative 48" reflectors with uplight, (Must specify color) ²⁹
		CLXRN24	Narrow 24" reflector, (Must specify color) ³⁰
		CLXRN36	Narrow 36" reflector, (Must specify color) ³⁰
		CLXRN48	Narrow 48" reflector, (Must specify color) ³⁰
		CLXRN96	Two narrow 48" reflectors, (Must specify color) ³⁰
		WGCLX24 ___	24" wireguard, (Must specify color) ³¹
		WGCLX36 ___	36" wireguard, (Must specify color) ³¹
		WGCLX48 ___	48" wireguard, XX, (Must specify color) 96" fixture requires two ³¹

Notes

- Not available with EOHN or AE1CD options.
- Not available with OUTCTR option.
- Not available with HA option.
- Not available with SEF when ordered in combination with EZ1.
- Not available with NLTAIR2 RES7, NLTAIR2 RES7PDT, or NLTAIR2 RIO.
- Not available with EZ1 when ordered with L24 with 5000LM or L36 with 7500LM.
- When ordered with L24 only available with 1500LM or 2000LM in combination with GZ10 driver. Not for use with THCLX, CLXANGBKT, CLX reflectors or WGCLX accessories. Not available with RDL lens options.
- Only available with general distribution.
- Not available with CLXRN accessories.
- Available L/LENS only.
- Not available with PS1050, E10WLCP, or BGTD.
- Voltage selected utilizes a step-down transformer. Not available with L24 when ordered with N100. Not available with PS1050, E10WLCP or BGTD option.
- Requires SPD option.
- When continuous row mounting, fixtures must all have the same driver selection.
- Not available with Enabled with Atrius, Individual controls, nLight wired networking, nLight wireless networking, nLight wireless zone control options.
- Not available with N100, Individual controls, nLight wired networking, nLight wireless networking, nLight wireless zone control options.
- Must specify voltage.
- Not available with L24 or L36. Not available with L48 in combination with N100.
- Not available with BGTD option.
- Available with L48 or L96 only. 20 Not available with PS1050 or E10WLCP options. Not available with 208 or 240V. Not available Individual controls, NLight Wired, or NLight Wireless options.
- Not available OUTEND.
- Not available with PLR options.
- Not available with XPoint, Individual controls, Enabled with Atrius, NLight Wired, or NLight Wireless options.
- Required with PS1050, E10WLCP, BGTD, XAD, or XAD924.
- Not available with any other control option. Requires EZ1.
- Requires N100 option.
- Not available with L24 in combination with 5000LM, not available with L36 in combination with 7500LM, not available with L48 in combination with 10000LM, and not available with L96 in combination with 14000LM, 18000LM, or 20000LM. Not available with PLRs containing low voltage dimming wires.
- Not available with louver, wireguards, wide reflectors.
- L24 reflector is 22.65", L36 reflector is 34.01", L48 reflector is 46.80", L96 comes with two L48 reflectors.
- For use with L/LENS fixtures only. L24 reflector is 22.75", L36 reflector is 34.20", L48 reflector is 46.85", L96 comes with two L48 reflectors.
- Not for use with CLX wide reflector accessories.

Enabled with Atrius™ Notes

- A Not available with L48 10000LM, L96 10000LM or L96 20000LM, L24 or L36. Not available with Individual controls, nLight wired networking, nLight wireless networking, nLight wireless zone control options. Not available with L/LENS, FDL or RDL lenses, SBL louvers or WGCLX_ wire guard accessories.
- B Available with EOHN driver only.

POWER SENTRY EMERGENCY BATTERY PACKS

PS1050	https://www.acuitybrands.com/products/detail/369448/Power-Sentry/PS1050/Reduced-Profile-LED-Emergency-Battery-Pack	Factory installable
E10WLCP	https://www.acuitybrands.com/products/detail/755258/Power-Sentry/PS1055LCP-Battery-Pack/Constant-Power-Field-Installable-LED-Emergency-Driver	Factory installable
PS1555LCP	https://www.acuitybrands.com/products/detail/755258/Power-Sentry/PS1055LCP-Battery-Pack/Constant-Power-Field-Installable-LED-Emergency-Driver	Field installable, remote mount only

EMERGENCY LUMENS

Efficiency Package	SEF	HEF
PS1050	1400	1500
PS1055LCP	1400	1500
PS1555LCP	2000	2100

Note: For emergency lumen output of specific model, please consult factory. One board will be illuminated during emergency operation.

CLX OPERATIONAL DATA

	Length	Nominal lumen package	Performance package	CRI	Delivered Lumens				Wattage	
					Color Temperature					
					3000K	3500K	4000K	5000K		
L/Lens	L24	1500LM	SEF	80	1497	1540	1582	1619	10.85	
				90	1305	1333	1371	1441	10.85	
			HEF	80	1493	1514	1582	1586	10.39	
				90	1220	1237	1301	1301	10.39	
		2000LM	SEF	80	2066	2125	2183	2235	14.48	
				90	1801	1840	1892	1989	14.48	
			HEF	80	2060	2089	2183	2189	13.46	
				90	1684	1708	1796	1796	13.46	
		2500LM	SEF	80	2616	2689	2763	2829	18.41	
				90	2279	2329	2394	2517	18.41	
			HEF	80	2607	2644	2763	2771	17.42	
				90	2132	2161	2273	2273	17.42	
		3500LM	SEF	80	3518	3617	3716	3804	25.83	
				90	3065	3132	3220	3385	25.83	
			HEF	80	3506	3556	3716	3726	25.04	
				90	2867	2907	3057	3057	25.04	
		4500LM	SEF	80	5040	5182	5325	5451	38.7	
				90	4392	4487	4614	4851	38.7	
			HEF	80	5024	5096	5325	5339	34.8	
				90	4108	4165	4380	4380	34.8	
		5000LM	SEF	80	5355	5506	5657	5791	41.48	
				90	4667	4767	4902	5153	41.48	
			HEF	80	5338	5414	5657	5672	38.11	
				90	4364	4425	4653	4653	38.11	
	L36	2250LM	SEF	80	2411	2547	2101	2207	16.36	
				90	2479	2607	2146	2320	16.36	
			HEF	80	2437	2554	1965	2095	15.47	
				90	2547	2403	1992	2095	15.47	
			3000LM	SEF	80	3221	3388	2730	2868	20.8
					90	3310	3133	2789	3015	20.8
		HEF		80	3167	3319	2553	2722	19.98	
			90	3310	3123	2589	2722	19.98		
		3750LM	SEF	80	4123	4337	3495	3671	26.47	
				90	4236	4010	3570	3859	26.47	
			HEF	80	4054	4248	3268	3485	25.09	
		90		4236	3997	3314	3485	25.09		
		5250LM	SEF	80	5545	5833	4700	4937	39.9	
				90	5698	5393	4801	5190	39.9	
			HEF	80	5452	5713	4396	4687	34.3	
		90		5698	5376	4457	4687	34.3		
		6750LM	SEF	80	7081	7448	6001	6303	54.85	
				90	7275	6886	6131	6627	54.85	
			HEF	80	6962	7294	5613	5984	47.97	
		90		7275	6864	5691	5984	47.97		
		7500LM	SEF	80	7756	8158	6574	6905	62.6	
				90	7969	7543	6716	7260	62.6	
			HEF	80	7626	7991	6148	6555	54.02	
		90		7969	7519	6234	6555	54.02		

CLX OPERATIONAL DATA (continued)

	Length	Nominal lumen package	Performance package	CRI	Delivered Lumens				Wattage		
					Color Temperature						
					3000K	3500K	4000K	5000K			
L/Lens	L48	3000LM	SEF	80	3019	3104	3190	3265	20.32		
				90	2631	2688	2764.	2906.	20.32		
			HEF	80	3010	3052	3190	3198	19.01		
				90	2461	2495	2624	2624	19.01		
		4000LM	SEF	80	4034	4148	4262	4363	27.58		
				90	3515	3591	3693	3882	27.58		
				HEF	80	4021	4078	4262	4273	24.75	
			HEF	90	3288	3334	3505	3505	24.75		
				5000LM	SEF	80	5047	5189	5332	5458	34.8
						90	4398	4493	4620	4857	34.8
		HEF	80		5031	5102	5332	5346	31.77		
			90	4113	4171	4386	4386	31.77			
		7000LM	SEF	80	7311	7517	7724	7907	49.05		
				90	6371	6509	6692	7036	49.05		
				HEF	80	7288	7391	7724	7744	44.67	
			90		5959	6042	6353	6353	44.67		
			9000LM		SEF	80	9215	9475	9735	9967	63.99
				90		8031	8204	8435	8869	63.99	
		HEF		80	9186	9317	9735	9762	58.58		
				90	7511	7615	8008	8008	58.58		
		10000LM	SEF	80	10299	10590	10880	11139	73.37		
				90	8975	9169	9427	9912	73.37		
				HEF	80	10266	10412	10880	10910	66.27	
			90		8394	8511	8950	8950	66.27		
	L96		6000LM		SEF	80	5942	6110	6278	6427	38.15
				90		5178	5290	5439	5719	38.15	
		HEF		80	5923	6008	6278	6294	35.54		
				90	4843	4911	5164	5164	35.54		
		8000LM	SEF	80	7929	8153	8376	8575	52.32		
				90	6910	7059	7258	7631	52.32		
	HEF		80	7903	8016	8376	8399	48.5			
			90	6462	6552	6890	6890	48.5			
	10000LM	SEF	80	9808	10085	10362	10608	66.47			
			90	8548	8732	8978	9439	66.47			
		HEF	80	9777	9916	10362	10390	60.89			
			90	7994	8106	8523	8523	60.89			
	14000LM	SEF	80	14323	14727	15131	15491	94.78			
			90	12482	12752	13111	13784	94.78			
		HEF	80	14277	14480	15131	15172	85.96			
			90	11674	11836	12447	12447	85.96			
	18000LM	SEF	80	18458	18979	19500	19963	128.98			
			90	16086	16433	16896	17764	128.98			
		HEF	80	18399	18661	19500	19552	116.92			
			90	15044	15254	16040	16040	116.92			
	20000LM	SEF	80	20386	20962	21537	22048	146.83			
			90	17766	18150	18661	19619	146.83			
		HEF	80	20321	20610	21537	21595	131.6			
			90	16616	16847	17716	17716	131.6			

CLX OPERATIONAL DATA (continued)

	Length	Nominal lumen package	Performance package	CRI	Delivered Lumens				Wattage	
					Color Temperature					
					3000K	3500K	4000K	5000K		
RDL	L24	1500LM	SEF	80	1359	1397	1436	1470	10.85	
				90	1184	1210	1244	1308	10.85	
			HEF	80	1355	1374	1436	1439	10.39	
				90	1107	1123	1181	1181	10.39	
		2000LM	SEF	80	1875	1928	1981	2028	14.48	
				90	1634	1670	1717	1805	14.48	
			HEF	80	1869	1896	1981	1987	13.46	
				90	1528	1550	1630	1630	13.46	
		2500LM	SEF	80	2374	2441	2508	2567	18.41	
				90	2069	2113	2173	2284	18.41	
			HEF	80	2366	2400	2508	2514	17.42	
				90	1935	1962	2063	2063	17.42	
		3500LM	SEF	80	3192	3282	3372	3452	25.83	
				90	2782	2842	2922	3072	25.83	
			HEF	80	3182	3227	3372	3381	25.04	
				90	2602	2638	2774	2774	25.04	
		4500LM	SEF	80	4574	4703	4832	4947	38.7	
				90	3986	4072	4187	4402	38.7	
			HEF	80	4560	4624	4832	4845	34.8	
				90	3728	3780	3975	3975	34.8	
		5000LM	SEF	80	4860	4997	5134	5256	41.48	
				90	4235	4327	4448	4677	41.48	
			HEF	80	4844	4913	5134	5148	38.11	
				90	3961	4016	4223	4223	38.11	
	L36	2250LM	SEF	80	2188	2250	2311	2366	16.36	
				90	1907	1948	2003	2106	16.36	
			HEF	80	2181	2212	2311	2318	15.47	
				90	1783	1808	1901	1901	15.47	
			3000LM	SEF	80	2843	2924	3004	3075	20.8
					90	2478	2531	2603	2736	20.8
		HEF		80	2834	2875	3004	3012	19.98	
				90	2317	2350	2471	2471	19.98	
		3750LM	SEF	80	3639	3742	3845	3936	26.47	
				90	3171	3240	3331	3502	26.47	
			HEF	80	3628	3679	3845	3855	25.09	
		90		2966	3007	3162	3162	25.09		
		5250LM	SEF	80	4895	5033	5171	5294	39.9	
				90	4265	4357	4480	4710	39.9	
			HEF	80	4879	4948	5171	5185	34.3	
		90		3989	4045	4253	4253	34.3		
		6750LM	SEF	80	6250	6426	6602	6759	54.85	
				90	5446	5564	5721	6014	54.85	
			HEF	80	6230	6318	6602	6620	47.97	
				90	5094	5165	5431	5431	47.97	
		7500LM	SEF	80	6846	7039	7232	7404	62.6	
				90	5966	6095	6266	6588	62.6	
			HEF	80	6824	6921	7232	7252	54.02	
				90	5580	5657	5949	5949	54.02	

CLX OPERATIONAL DATA (continued)

	Length	Nominal lumen package	Performance package	CRI	Delivered Lumens				Wattage	
					Color Temperature					
					3000K	3500K	4000K	5000K		
RDL	L48	3000LM	SEF	80	2740	2817	2895	2963	20.32	
				90	2388	2439	2508	2637	20.32	
			HEF	80	2731	2770	2895	2902	19.01	
				90	2233	2264	2381	2381	19.01	
		4000LM	SEF	80	3661	3764	3868	3959	27.58	
				90	3190	3259	3351	3523	27.58	
			HEF	80	3649	3701	3868	3878	24.75	
				90	2984	3025	3181	3181	24.75	
		5000LM	SEF	80	4580	4710	4839	4954	34.8	
				90	3992	4078	4193	4408	34.8	
			HEF	80	4566	4631	4839	4852	31.77	
				90	3733	3785	3980	3980	31.77	
		7000LM	SEF	80	6635	6822	7009	7176	49.05	
				90	5782	5907	6073	6385	49.05	
			HEF	80	6614	6708	7009	7028	44.67	
				90	5408	5483	5766	5766	44.67	
		9000LM	SEF	80	8363	8599	8835	9045	63.99	
				90	7288	7446	7655	8049	63.99	
			HEF	80	8336	8455	8835	8859	58.58	
				90	6816	6911	7268	7268	58.58	
		10000LM	SEF	80	9347	9611	9874	10109	73.37	
				90	8145	8321	8556	8995	73.37	
			HEF	80	9317	9450	9874	9901	66.27	
				90	7618	7724	8122	8122	66.27	
	L96	6000LM	SEF	80	5393	5545	5697	5832	38.15	
				90	4700	4801	4936	5190	38.15	
			HEF	80	5375	5452	5697	5712	35.54	
				90	4395	4457	4686	4686	35.54	
			8000LM	SEF	80	7196	7399	7602	7782	52.32
					90	6271	6406	6587	6925	52.32
		HEF		80	7173	7275	7602	7622	48.5	
			90	5865	5946	6253	6253	48.5		
		10000LM	SEF	80	8902	9153	9404	9627	66.47	
				90	7757	7925	8148	8567	66.47	
			HEF	80	8873	8999	9404	9429	60.89	
		90		7255	7356	7735	7735	60.89		
		14000LM	SEF	80	12999	13366	13732	14058	94.78	
				90	11328	11573	11899	12510	94.78	
			HEF	80	12957	13142	13732	13769	85.96	
		90		10594	10742	11296	11296	85.96		
		18000LM	SEF	80	16751	17224	17697	18117	128.98	
				90	14598	14913	15334	16121	128.98	
			HEF	80	16698	16936	17697	17744	116.92	
		90		13653	13843	14557	14557	116.92		
		20000LM	SEF	80	18501	19023	19545	20009	146.83	
				90	16123	16471	16935	17805	146.83	
			HEF	80	18442	18705	19545	19598	131.6	
		90		15079	15290	16078	16078	131.6		

CLX OPERATIONAL DATA (continued)

	Length	Nominal lumen package	Performance package	CRI	Delivered Lumens				Wattage	
					Color Temperature					
					3000K	3500K	4000K	5000K		
FDL	L24	1500LM	SEF	80	1320	1358	1395	1428	10.85	
				90	1151	1175	1208	1271	10.85	
			HEF	80	1316	1335	1395	1399	10.39	
				90	1076	1091	1147	1147	10.39	
		2000LM	SEF	80	1822	1874	1925	1971	14.48	
				90	1588	1622	1668	1754	14.48	
			HEF	80	1816	1842	1925	1930	13.46	
				90	1485	1506	1583	1583	13.46	
		2500LM	SEF	80	2306	2371	2436	2494	18.41	
				90	2010	2053	2111	2219	18.41	
			HEF	80	2299	2332	2436	2443	17.42	
				90	1880	1906	2004	2004	17.42	
		3500LM	SEF	80	3102	3189	3277	3354	25.83	
				90	2703	2761	2839	2985	25.83	
			HEF	80	3092	3136	3277	3285	25.04	
				90	2528	2563	2695	2695	25.04	
		4500LM	SEF	80	4444	4570	4695	4807	38.7	
				90	3873	3957	4068	4277	38.7	
			HEF	80	4430	4493	4695	4708	34.8	
				90	3622	3673	3862	3862	34.8	
		5000LM	SEF	80	4722	4855	4988	5107	41.48	
				90	4115	4204	4322	4544	41.48	
			HEF	80	4707	4774	4988	5002	38.11	
				90	3848	3902	4103	4103	38.11	
	L36	2250LM	SEF	80	2126	2186	2246	2299	16.36	
				90	1852	1892	1946	2046	16.36	
			HEF	80	2119	2149	2246	2252	15.47	
				90	1732	1757	1847	1847	15.47	
			3000LM	SEF	80	2762	2840	2918	2988	20.8
					90	2407	2459	2529	2659	20.8
		HEF		80	2754	2793	2918	2926	19.98	
			90	2251	2283	2401	2401	19.98		
		3750LM	SEF	80	3536	3636	3735	3824	26.47	
				90	3081	3148	3237	3403	26.47	
			HEF	80	3525	3575	3735	3745	25.09	
		90		2882	2922	3073	3073	25.09		
		5250LM	SEF	80	4755	4890	5024	5143	39.9	
				90	4144	4234	4353	4577	39.9	
			HEF	80	4740	4808	5024	5037	34.3	
		90		3876	3930	4132	4132	34.3		
		6750LM	SEF	80	6072	6243	6415	6567	54.85	
				90	5292	5406	5558	5844	54.85	
			HEF	80	6053	6139	6415	6432	47.97	
		90		4949	5018	5276	5276	47.97		
		7500LM	SEF	80	6651	6839	7027	7194	62.6	
				90	5796	5922	6088	6401	62.6	
			HEF	80	6630	6725	7027	7046	54.02	
		90		5421	5497	5780	5780	54.02		

CLX OPERATIONAL DATA (continued)

	Length	Nominal lumen package	Performance package	CRI	Delivered Lumens				Wattage
					Color Temperature				
					3000K	3500K	4000K	5000K	
FDL	L48	3000LM	SEF	80	2662	2737	2812	2879	20.32
				90	2320	2370	2437	2562	20.32
			HEF	80	2654	2691	2812	2820	19.01
				90	2170	2200	2313	2313	19.01
		4000LM	SEF	80	3557	3657	3758	3847	27.58
				90	3100	3167	3256	3423	27.58
			HEF	80	3546	3596	3758	3768	24.75
				90	2899	2939	3091	3091	24.75
		5000LM	SEF	80	4450	4576	4701	4813	34.8
				90	3878	3962	4073	4283	34.8
			HEF	80	4436	4499	4701	4714	31.77
				90	3627	3678	3867	3867	31.77
		7000LM	SEF	80	6446	6628	6810	6972	49.05
				90	5618	5739	5901	6204	49.05
			HEF	80	6426	6517	6810	6829	44.67
				90	5254	5327	5602	5602	44.67
		9000LM	SEF	80	8126	8355	8584	8788	63.99
				90	7081	7234	7438	7820	63.99
			HEF	80	8100	8215	8584	8607	58.58
				90	6623	6715	7061	7061	58.58
		10000LM	SEF	80	9081	9338	9594	9822	73.37
				90	7914	8085	8313	8740	73.37
			HEF	80	9052	9181	9594	9620	66.27
				90	7402	7505	7892	7892	66.27
	L96	6000LM	SEF	80	5240	5387	5535	5667	38.15
				90	4566	4665	4796	5042	38.15
			HEF	80	5223	5297	5535	5550	35.54
				90	4270	4330	4553	4553	35.54
		8000LM	SEF	80	6991	7189	7386	7561	52.32
				90	6093	6224	6400	6728	52.32
			HEF	80	6969	7068	7386	7406	48.5
				90	5698	5778	6075	6075	48.5
		10000LM	SEF	80	8649	8893	9137	9354	66.47
				90	7537	7700	7917	8323	66.47
			HEF	80	8621	8744	9137	9161	60.89
				90	7049	7147	7516	7516	60.89
		14000LM	SEF	80	12630	12986	13342	13659	94.78
				90	11006	11244	11561	12154	94.78
			HEF	80	12589	12768	13342	13378	85.96
				90	10293	10437	10975	10975	85.96
		18000LM	SEF	80	16276	16735	17194	17602	128.98
				90	14184	14490	14898	15663	128.98
			HEF	80	16223	16454	17194	17240	116.92
				90	13265	13450	14143	14143	116.92
		20000LM	SEF	80	17976	18483	18990	19441	146.83
				90	15665	16004	16454	17300	146.83
			HEF	80	17918	18173	18990	19041	131.6
				90	14651	14855	15621	15621	131.6

CLX OPERATIONAL DATA (continued)

	Length	Nominal lumen package	Performance package	CRI	Delivered Lumens				Wattage	
					Color Temperature					
					3000K	3500K	4000K	5000K		
WDL	L24	1500LM	SEF	80	1377	1415	1454	1489	10.85	
				90	1200	1226	1260	1325	10.85	
			HEF	80	1372	1392	1454	1458	10.39	
				90	1122	1138	1196	1196	10.39	
		2000LM	SEF	80	1900	1953	2007	2055	14.48	
				90	1656	1691	1739	1828	14.48	
			HEF	80	1894	1921	2007	2012	13.46	
				90	1548	1570	1651	1651	13.46	
		2500LM	SEF	80	2405	2472	2540	2601	18.41	
				90	2095	2141	2201	2314	18.41	
			HEF	80	2397	2431	2540	2547	17.42	
				90	1960	1987	2090	2090	17.42	
		3500LM	SEF	80	3234	3325	3416	3497	25.83	
				90	2818	2879	2960	3112	25.83	
			HEF	80	3223	3269	3416	3426	25.04	
				90	2636	2672	2810	2810	25.04	
		4500LM	SEF	80	4634	4765	4895	5012	38.7	
				90	4038	4125	4242	4459	38.7	
			HEF	80	4619	4685	4895	4908	34.8	
				90	3777	3829	4027	4027	34.8	
		5000LM	SEF	80	4923	5062	5201	5324	41.48	
				90	4290	4383	4506	4738	41.48	
			HEF	80	4907	4977	5201	5215	38.11	
				90	4012	4068	4278	4278	38.11	
	L36	2250LM	SEF	80	2216	2279	2341	2397	16.36	
				90	1931	1973	2029	2133	16.36	
			HEF	80	2209	2241	2341	2348	15.47	
				90	1806	1832	1926	1926	15.47	
			3000LM	SEF	80	2880	2962	3043	3115	20.8
					90	2510	2564	2636	2772	20.8
		HEF		80	2871	2912	3043	3051	19.98	
			90	2347	2380	2503	2503	19.98		
		3750LM	SEF	80	3687	3791	3895	3987	26.47	
				90	3213	3282	3375	3548	26.47	
			HEF	80	3675	3727	3895	3905	25.09	
		90		3005	3047	3204	3204	25.09		
		5250LM	SEF	80	4958	5098	5238	5362	39.9	
				90	4321	4414	4539	4772	39.9	
			HEF	80	4942	5013	5238	5252	34.3	
		90		4041	4097	4309	4309	34.3		
		6750LM	SEF	80	6331	6510	6688	6847	54.85	
				90	5517	5636	5795	6093	54.85	
			HEF	80	6311	6401	6688	6706	47.97	
		90		5160	5232	5502	5502	47.97		
		7500LM	SEF	80	6935	7131	7326	7500	62.6	
				90	6044	6174	6348	6674	62.6	
			HEF	80	6913	7011	7326	7346	54.02	
		90		5652	5731	6027	6027	54.02		

CLX OPERATIONAL DATA (continued)

	Length	Nominal lumen package	Performance package	CRI	Delivered Lumens				Wattage
					Color Temperature				
					3000K	3500K	4000K	5000K	
WDL	L48	3000LM	SEF	80	2776	2854	2932	3002	20.32
				90	2419	2471	2541	2671	20.32
			HEF	80	2767	2806	2932	2940	19.01
				90	2262	2294	2412	2412	19.01
		4000LM	SEF	80	3709	3813	3918	4011	27.58
				90	3232	3302	3395	3569	27.58
			HEF	80	3697	3749	3918	3929	24.75
				90	3023	3065	3223	3223	24.75
		5000LM	SEF	80	4640	4771	4902	5018	34.8
				90	4044	4131	4247	4465	34.8
			HEF	80	4625	4691	4902	4915	31.77
				90	3782	3834	4032	4032	31.77
		7000LM	SEF	80	6721	6911	7101	7269	49.05
				90	5857	5984	6152	6469	49.05
			HEF	80	6700	6795	7101	7120	44.67
				90	5478	5554	5841	5841	44.67
		9000LM	SEF	80	8472	8711	8950	9163	63.99
				90	7383	7543	7755	8154	63.99
			HEF	80	8445	8565	8950	8974	58.58
				90	6905	7001	7362	7362	58.58
		10000LM	SEF	80	9469	9736	10003	10240	73.37
				90	8252	8430	8667	9112	73.37
			HEF	80	9438	9573	10003	10030	66.27
				90	7717	7825	8228	8228	66.27
	L96	6000LM	SEF	80	5463	5617	5771	5908	38.15
				90	4761	4864	5001	5258	38.15
			HEF	80	5445	5523	5771	5787	35.54
				90	4452	4515	4747	4747	35.54
		8000LM	SEF	80	7289	7495	7701	7884	52.32
				90	6353	6490	6672	7015	52.32
			HEF	80	7266	7370	7701	7722	48.5
				90	5941	6024	6334	6334	48.5
		10000LM	SEF	80	9017	9272	9526	9752	66.47
				90	7858	8028	8254	8678	66.47
			HEF	80	8988	9117	9526	9552	60.89
				90	7349	7452	7836	7836	60.89
		14000LM	SEF	80	13168	13540	13911	14241	94.78
				90	11476	11723	12054	12673	94.78
			HEF	80	13126	13313	13911	13949	85.96
				90	10732	10882	11443	11443	85.96
		18000LM	SEF	80	16970	17448	17927	18353	128.98
				90	14788	15108	15533	16331	128.98
			HEF	80	16915	17156	17927	17975	116.92
				90	13831	14024	14746	14746	116.92
		20000LM	SEF	80	18742	19271	19800	20270	146.83
				90	16333	16686	17156	18037	146.83
			HEF	80	18682	18948	19800	19853	131.6
				90	15276	15489	16287	16287	131.6

CLX CHARACTERISTICS

Nominal Lumen Package	Length	Wattage								Length	Width	Depth	Comparable Light Source
		Standard efficiency				High efficiency							
		120V	277V	347V	480V	120V	277V	347V	480V				
Dimensions are shown in inches													
2500LM	24"	19.9	19.9	25.9	25.9	18.5	18.5	24.5	24.5	24	3.5	3.75	1-lamp 32WT8, 1-lamp 54W T5HO, 50W HID
5000LM	24"	41.9	41.9	47.9	47.9	37.9	37.9	43.9	43.9	24	3.5	3.75	2-lamp 32WT8, 1-lamp 54W T5HO, 70W HID
3750LM	36"	28.1	28.1	34.1	34.1	27.0	27.0	33.0	33.0	36	3.5	3.75	1-lamp 32WT8, 1-lamp 54W T5HO, 50W HID
7500LM	36"	62.9	62.9	68.9	68.9	56.8	56.8	62.8	62.8	36	3.5	3.75	2-lamp 32WT8, 1-lamp 54W T5HO, 70W HID
5000LM	48"	35.4	35.4	41.4	41.4	32.9	32.9	38.9	38.9	48	3.5	3.75	2-lamp 32WT8, 1-lamp 54W T5HO, 70W HID
10000LM	48"	77.1	77.1	83.1	83.1	70.4	70.4	76.4	76.4	48	3.5	3.75	3-lamp 32WT8, 2-lamp 54W T5HO, 100W HID
10000LM	96"	70.8	70.8	76.8	76.8	65.8	65.8	71.8	71.8	96	3.5	3.75	3-lamp 32WT8, 2-lamp 54W T5HO, 100W HID
20000LM	96"	154.2	154.2	160.2	160.2	140.8	140.8	146.8	146.8	96	3.5	3.75	6-lamp 32WT8, 4-lamp 54W T5HO, 200W HID

AMBIENT TEMPERATURE RATINGS

Driver Package		GZ10			EZ1 or EOHN			Any Driver	
Length	Lumen package	Direct Surface	THCLX/ Suspended	HA Option (Direct or Suspended)	Direct Surface	THCLX	Suspended 18"	Xpoint/ BGTD Direct Surface	PS1050 Suspended
L24	1500LM	40C	40C	N/A	35C	35C	35C	N/A	N/A
	2000LM	40C	40C		35C	35C	35C		
	2500LM	40C	40C		35C	35C	35C		
	3000LM	40C	40C		40C	40C	40C		
	4500LM	40C	40C		35C	35C	40C		
	5000LM	40C	40C		25C	30C	35C		
L36	2250LM	40C	40C		40C	40C	40C		
	3000LM	40C	40C		40C	40C	40C		
	3750LM	40C	40C		40C	40C	40C		
	5250LM	40C	40C		35C	35C	40C		
	6750LM	30C	40C		35C	35C	40C		
	7500LM	30C	40C		25C	30C	35C		
L48	3000LM	40C	40C	50C	40C	40C	40C	35C	25C
	4000LM	40C	40C	50C	40C	40C	40C		
	5000LM	40C	40C	50C	35C	35C	40C		
	7000LM	30C	40C	N/A	35C	35C	40C		
	9000LM	30C	40C		25C	30C	35C		
	10000LM	30C	40C		25C	30C	35C		
L96	6000LM	40C	40C		50C	35C	35C		
	8000LM	30C	40C	50C	35C	35C	40C		
	10000LM	30C	40C	50C	25C	30C	35C		
	14000LM	40C	40C	N/A	35C	35C	40C		
	18000LM	30C	40C		25C	30C	35C		
	20000LM	30C	40C		25C	30C	35C		
25C					30C	35C			

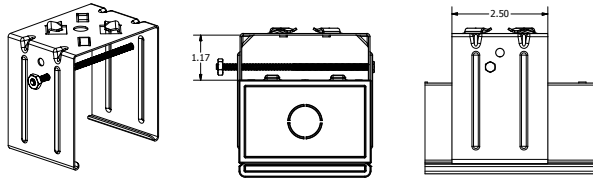
DIMENSIONS

All dimensions are in inches (centimeters) unless otherwise indicated.
Dimensions may vary with options or accessories.

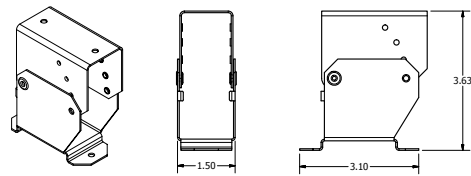
PALLET DIMENSIONS

Length	Approx Weight	Fixtures per pallet	Pallet Dims (L X W X H)
L24	4 lb	100	54x46x37
L36	5 lb	80	54x46x37
L48	7.5 lb	64	54x46x37
L96	14 lb	64	98x46x37

THCLX - SHIPS TWO PER ORDER,
UTILIZES A #8 HEX HEAD SCREW AND NUT
FIXTURE SITS 1.3 INCHES FROM STRUCTURE WHEN MOUNTED

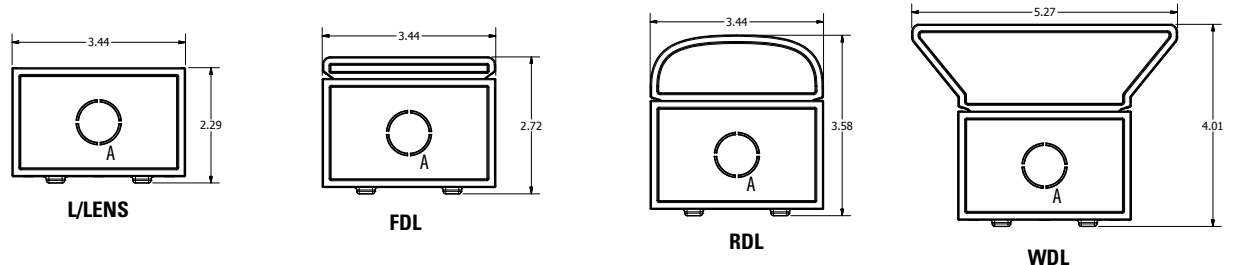
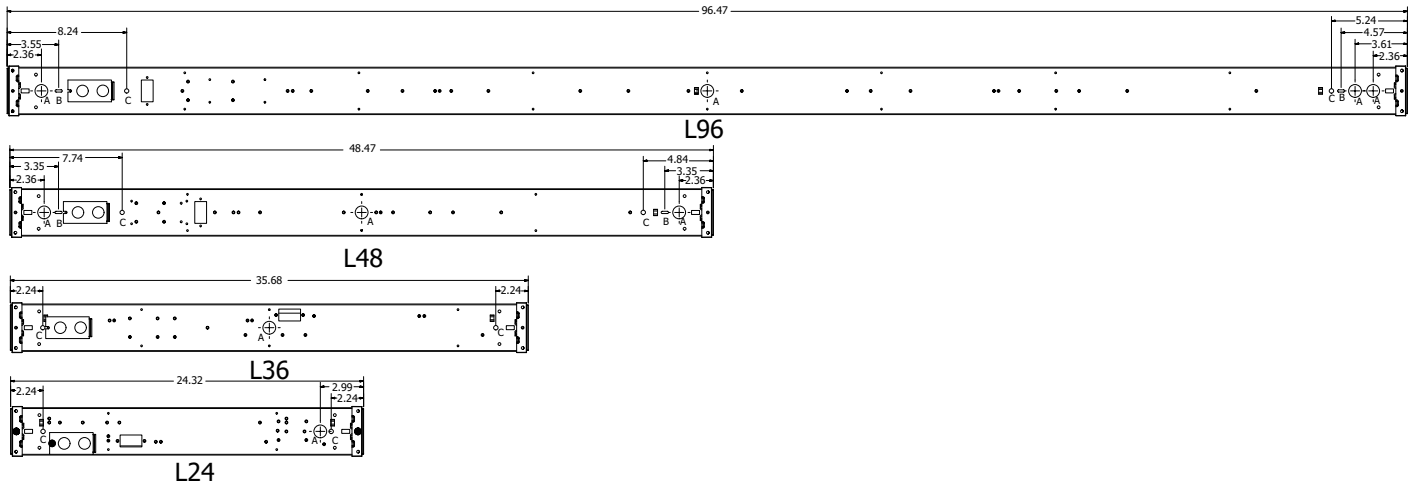


CLXANGBKT - SHIPS TWO PER ORDER
HOLES TO MOUNTING STRUCTURE ARE 0.175" DIA, 2.5" APART
FIXTURE SITS APPROXIMATELY 3.5" FROM STRUCTURE
WHEN MOUNTED HORIZONTAL TO STRUCTURE



INTEGRATED SENSOR ADDS 4.75 INCHES TO STANDALONE FIXTURE LENGTH
HOUSING END CAP ADDS 0.236 INCHES TO FIXTURE LENGTH PER SIDE. DIMENSIONS BELOW INCLUDE ENDCAPS.

A - 7/8" KNOCK OUT
B - 0.5" by 0.16" SLOT
C - 0.3" DIA HOLE



PHOTOMETRICS

See www.lithonia.com.

RRL - RELOC®-Ready Luminaire

- RRL connectors can be used with Quick-Flex®, System 820 and OnePass® systems.
- Load side of connector factory installed to luminaire.
- 4-pole mating connector with push-in terminations allows for simple installation.
- Touch-safe design on both halves meets UL/CSA requirement.
- Wiping contact design allows safe disconnect under load.



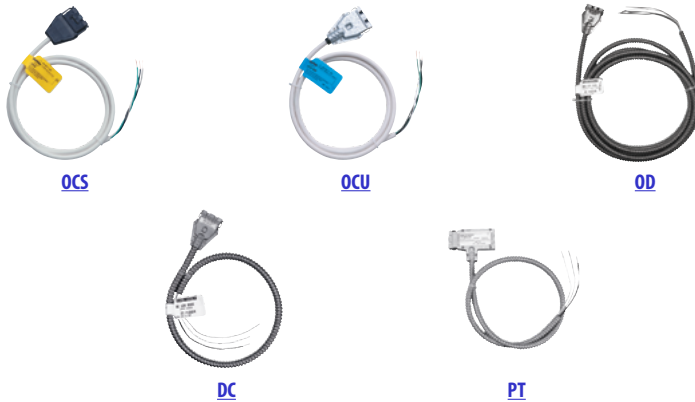
ORDERING INFORMATION

Lead times will vary depending on options selected. Consult with your sales representative.

Example: RRLA

Series	Wiring instructions
RRL RELOC®-ready luminaire	A Hot conductor wired to position #1 (phase A) B Hot conductor wired to position #2 (phase B) C Hot conductor wired to position #3 (phase C) ¹

Compatible RELOC® Cables for Industrial Luminaires (ordered and shipped separately)



Notes

- ¹ C, ABE, and C12S options are not used with Quick-Flex QFC, QSFC, QPT, and QD.

PRODUCT INFORMATION

Advanced plug-in system with three-circuit capability. Available on industrial and strip products and a variety of architectural products mounted in continuous rows. 1, 2, 3 and 4-lamp fixtures. PLR22 (2-circuit) and PLR33 (3-circuit) crossover harness switches hot circuit serving next fixture in row. Reduces fixture types on job for alternating circuit applications (see example below.)

Easy one-step installation, saves up to 35% on labor costs. Expanded switching flexibility helps save energy.

Rows can be 50% longer with two-circuit systems. Polarized, lock-together nylon connectors prevent miswiring in the field. #12 THHN conductor, rated 600V, 90°C. White neutral wire included. Grounding accomplished by fixture in-row connectors.

CSA certified systems available with up to 2 circuits. G ground required.

Note: Specifications subject to change without notice.



PLR

Wiring

Advanced 3-Circuit Plug-In

ORDERING INFORMATION

Lead times will vary depending on options selected. Consult with your sales representative.

Series	Number of hot wires	Branch circuits	Dimming	Ground
PLR	(blank) Not required for 22 or 33	<u>Circuits to which ballast is connected</u>	LV Low-voltage dimming	(blank) No ground in PLR
PLR22	1 Black	(blank) Not required for 22 or 33		G Ground. Maximum 2 circuits
PLR33	2 Black and red	A Black wire		
	3 Black, red and blue	B Red wire		
		C Blue wire		
		Emergency circuit connected		
		(blank) No emergency circuit		
		ELA Emergency circuit wired to black wire		
		ELB Emergency circuit wired to red wire		
		ELC Emergency circuit wired to blue wire		

Typical Applications

- Multiple-circuit and single-circuit for longer continuous rows
- Multiple-circuit with alternating fixtures on separate circuits, 2-circuit (PLR 22) and 3-circuit (PLR 33)
- Multiple circuit with night-lights located along row as desired

TYPICAL APPLICATIONS										
PLR 3 C	PLR 3 C	PLR 3 C	PLR 3 C	PLR 2 B	PLR 2 B	PLR 2 B	PLR 2 B	PLR 1	PLR 1	PLR 1
(All PLR22)										
Circuit A	Circuit B	Circuit A	Circuit B	Circuit A	Circuit B	Circuit A	Circuit B	Circuit A	Circuit B	Circuit A
(All PLR33)										
Circuit A	Circuit B	Circuit C	Circuit A	Circuit B	Circuit C	Circuit A	Circuit B	Circuit C	Circuit A	Circuit B
PLR 3 A	PLR 3 A	PLR 3 A	PLR 3 C	PLR 3 B	PLR 3 B	PLR 3 B	PLR 3 C	PLR 3 A	PLR 3 A	PLR 3 A

PRODUCT INFORMATION

A standard occupancy time delay is also present to ensure lights turn off (once minimum on timer has also elapsed) if no occupancy is detected.

This timer is factory set at 10 minutes to promote energy savings, but is adjustable between 30 seconds and 30 minutes. These adjustments may be done through the unit's push-button.

FEATURES

- Four interchangeable lenses - high mount 360°, low mount 360°, high mount aisleway, and small motion 360°.
- Integrated mounting bracket drops lens down 3" from chase nipple - no bracket accessory required.
- 100% digital PIR detection - provides excellent RF immunity

Note: Specifications subject to change without notice.



LSXR

Passive Infrared Indoor Occupancy Sensor

Single Relay



ORDERING INFORMATION

Lead times will vary depending on options selected. Consult with your sales representative.

Example: LSXR 10 ADC HVOLT 30M

Series	Lens option	Dimming/photocell
LSXR Passive Infrared Indoor Occupancy Sensor	(blank) No lens 610 High and low mount 360° 6 High mount, 360° 650 High mount 360° and aisleway 10 Low mount, 360° 3PK High and low mount 360° and aisleway 50 High mount aisleway 4PK All lenses 9 Small motion, 360°	(blank) None HL High/low occupancy operation P Switching photocell (on/off) ADC Dimming and switching photocell ANL Dimming and switching photocell with high/low occupancy operation

Voltage	Max dim level	Min dim level	Lead length	Temp humidity	Default time delay
(blank) 120-277 VAC (MVOLT)	(blank) 10 VDC	(blank) Minimum dimming level of ballast	(blank) 14"	(blank) None	(blank) 10 minutes (with minimum 15 minutes on time)
HVOLT 347-480 VAC	9H 9 VDC	1V 1 VDC	42L 42"	LT Low temperature	5M 5 minutes (LED only)
	8H 8 VDC	2V 2 VDC			15M 15 minutes
	7H 7 VDC	3V 3 VDC			20M 20 minutes
		4V 4 VDC			30M 30 minutes
		5V 5 VDC			
		6V 6 VDC			

For additional information see www.lithonia.com



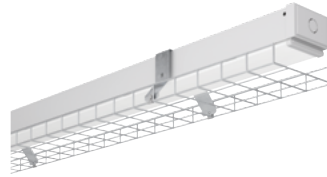
OPTIONS AND ACCESSORIES



Narrow reflector
Ships separately from fixture.
Order as:
CLXRN24____
CLXRN36____
CLXRN48____
CLXRN96____



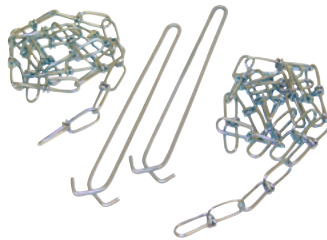
Wide decorative reflector
Ships separately from fixture.
Order as:
CLXRW24____
CLXRW36____
CLXRW48____
CLXRW96____



Wireguard
Ships separately from fixture:
96" fixture requires two WGCLX48.
Order as:
WGCLX24____
WGCLX36____
WGCLX48____



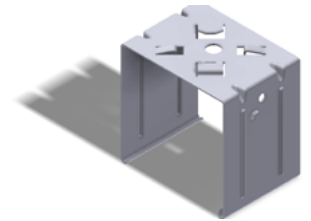
Aircraft Cable with Canopy
Available in 120" or 240"
Order as:
ZAC120____
ZAC240____



HANGER CHAIN
36" chain with Y hanger. ships as a pair
Order as:
HC36____



ZACVH HANGER
10' Aircraft cable with Y hanger.
Order as:
ZACVH____



Tong hanger
Ships as a pair
Order As:
THCLX____