

WS/WW SERIES PREMIUM WRAPAROUND

Job Name

Catalog Number

Notes

Type



application

- Versatile, low profile luminaire with a low brightness diffuser, ideal for schools, offices, showrooms and a broad variety of commercial and institutional applications
- Able to be surface or pendant mounted individually or in rows for a continuous linear look
- Available in 2 or 4 light, multiple lengths and numerous lamp/ballast combinations

diffuser

- One piece extruded 100% clear virgin acrylic prismatic lens
- Wide diffuser design provides lower brightness than narrow wrap fixtures
- Features a prismatic pattern on the bottom and linear refractive sides
- Lift and shift lens for ease of re-lamping and cleaning
- Self-hinging lens hooks onto full length of housing and may hinge from either side
- Joiner band supplied on 6 and 8-ft. units, utilizing two diffusers, for a finished appearance

construction

- The WS/WW series is a high quality fluorescent wraparound specifically designed for long-term, heavy-duty installation
- Features durable steel bodies, quality paint finishes and superior electrical components
- Ends are embossed for added strength and fastened securely to the housing by rivets
- Die formed from cold rolled steel for strength and uniformity
- Manufactured from code gauge steel
- Wireway covers easily attach without the use of tools
- Ample knockouts are provided on back and sides for convenient installation
- All fixtures are U.L. listed and IBEW union made

electrical

- All electrical components are U.L. listed
- Electronic Class P, thermally protected ballasts standard
- Numerous options are available: see ordering information on back

finish

- Prior to painting, all metal parts are treated with a multi-stage phosphate bonding process to ensure adhesion and inhibit rusting
- Painted with a lighting grade baked white enamel, having a reflectance factor exceeding 87% for premium quality and durability

LaMar
Lighting
Company, Inc.

ordering guide

NOTE: SOME ORDERING OPTIONS APPEAR ON PRODUCT LINE.
FOR OTHER OPTIONS, SEE LIST AT RIGHT.

SAMPLE ORDER NUMBER

WS 4 32 E8 U

SERIES NO. LAMPS WATTAGE TANDEM BALLAST TYPE VOLTAGE OPTIONS 1 2 DIMENSIONS LAMP TYPE

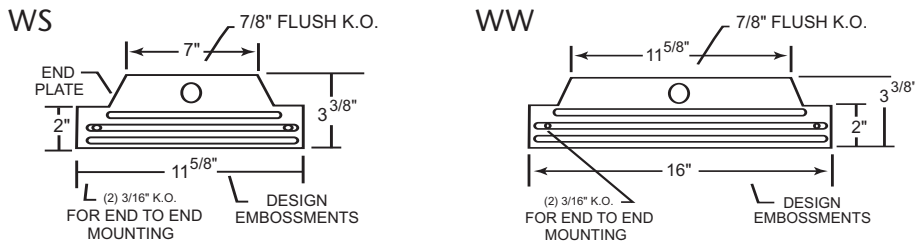
T-8 ORDERING GUIDE									
WS	2	17		E8	1, U			11 5/16" x 24"	F17T8
WS	2	32		E8	1, U			11 5/16" x 48"	F32T8
WS	2	25	T	E8	1, U			11 5/16" x 72"	F25T8
WS	2	32	T	E8	1, U			11 5/16" x 96"	F32T8
WS	2	96		E8, H8	1, U			11 5/16" x 96"	F96T8/F96T8HO
WW	4	17		E8	1, U			16" x 24"	F17T8
WW	4	32		E8	1, U			16" x 48"	F32T8
WW	4	25	T	E8	1, U			16" x 72"	F25T8
WW	4	32	T	E8	1, U			16" x 96"	F32T8
WW	4	96		E8, H8	1, U			16" x 96"	F96T8/F96T8HO
T-5 ORDERING GUIDE									
WS	2	14, 24		E5, H5	1, U			11 5/16" x 24"	F14T5/F24T5HO
WS	2	28, 54		E5, H5	1, U			11 5/16" x 48"	F28T5/F54T5HO

Note: Tandem units contain double the amount of lamps shown

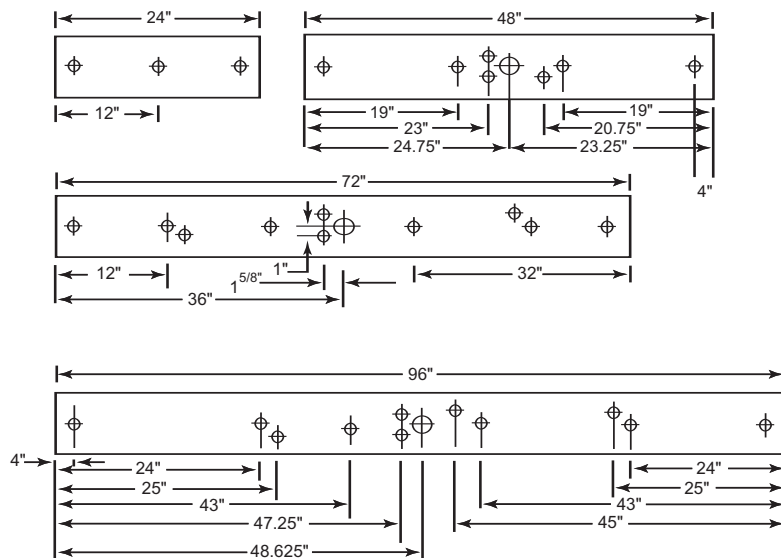
dimensional data

NOTE: SPECIFICATIONS AND DIMENSIONAL DATA ARE SUBJECT
TO CHANGE WITHOUT NOTICE.

cross sections



back knockout plans and lengths



WS/WW
SERIES

PREMIUM WRAPAROUND

options

OPTIONS: INSERT APPROPRIATE CODE FOR
CUSTOMIZED ORDERING

BALLAST

E5 Electronic T5
H5 Electronic T5 HO
E8 Electronic T8
ED Electronic dimming
(Consult Factory)

NOTE: In order to achieve rated lamp life,
fixtures controlled by motion sensors should
be ordered with programmed start ballasts
when available and minimum time delay
should be set to 15 minutes - Consult Factory

VOLTAGE

1 120V
U Universal 120 - 277V

GENERAL OPTIONS

EM Emergency pack, 1 lamp
90 min. up to 500 lu.
2C 2 Circuit
HF High frequency occupancy sensor

accessories

RFWS Aluminum reflector
RFFW Aluminum reflector
Canopy Standard white 5" dia.,
1 1/2" deep with hardware
Stem Stem + Length needed

LAMP OPTIONS

12 T8 741K
15 T8 735K
10 T8 730K
13 T5/T8 841K
16 T5/T8 835K
11 T5/T8 830K

Revised
5/09

LAMAR LIGHTING 485 Smith Street, Farmingdale, NY 11735 • Tel (631) 777-7700
Fax (631) 777-7705 • Outside NY (800) 724-7743 • www.lamarlighting.com

Lamar
Lighting
Company, Inc.