

E26 5" Trim Series

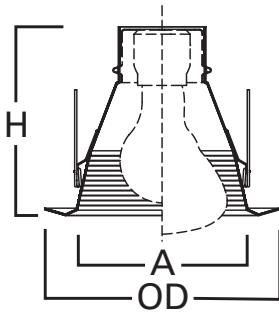
DESCRIPTION

Shallow full cone baffle trim with self-flange in the 5" trim family for use in recessed downlighting. Compatible for use in Halo and other housings.

Catalog #		Type
Project		
Comments		Date
Prepared by		

SPECIFICATION FEATURES

- Shallow full cone metal baffle
- Torsion spring retention
- Socket supporting
- Self-flanged trim ring sized to hide gaps caused by construction tolerances

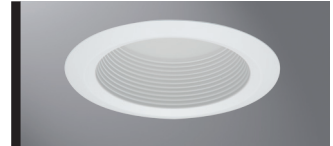


Dimensions:

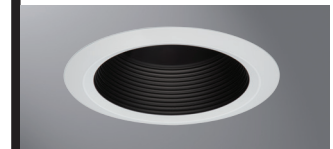
A: 4-3/4" [121mm]
 H: 5-5/16" [135mm]
 OD: 6-5/8" [168mm]

Housings	Max Lamp Compatibility
H5ICAT H5RICAT	50W PAR30S, 75W PAR30L, 65W BR30
E5ICAT E5RICAT	
H25ICAT	5126WB: 50W PAR20, 50W PAR30S, 75W PAR30L, 65W BR30 5126BB: 50W PAR20, 50W PAR30S, 60W PAR30L, 50W BR30
H5ICATNB	50W PAR30S, 75W PAR30L, 65W BR30
E5ICATNB	
H25ICATNB	5126WB: 50W PAR20, 50W PAR30S, 75W PAR30L, 65W BR30 5126BB: 50W PAR20, 50W PAR30S, 60W PAR30L, 50W BR30

Compatible with Halogen, Incandescent, LED* or CFL* lamps.



5126WB
White Baffle,
White Trim



5126BB
Black Baffle,
White Trim

5126

**5-Inch Shallow Full Cone
Baffle, Self-flange**

ORDERING INFORMATION

SAMPLE NUMBER: 5120WH

Trim	Finish
5126= 5" Shallow Full Cone Baffle, Self-flange	WB =Matte white baffle, Matte white trim BB =Black baffle, White trim

HOUSING COMPATIBILITY

Trim #	Style	H5ICAT	H5RICAT	E5ICAT	E5RICAT	H25ICAT	H5ICATNB	E5ICATNB	H25ICATNB
5126	Baffle	•	•	•	•	•	•	•	•

For use in other's housings, refer to U.L. Classification list at www.eaton.com/lighting/legal.



For use in Halo listed housings.



Select trims are classified for use in others housings. See www.eaton.com/lighting/legal.

*UL1993 listed LED & CFL equivalent lamps permitted. Consult lamp manufacturer for conditions of use. Eaton does not warranty the lamp.