



Project:	Type:
Prepared By:	Date:

Technical Specifications

Listings

UL Listing:

Suitable for damp locations

Construction

Housing:

Steel sheet metal, die formed aluminum

Finish:

Formulated for high-durability and long lasting color

Other

Description:

EZPAN 2X4 surface mounting kit for drywall ceilings

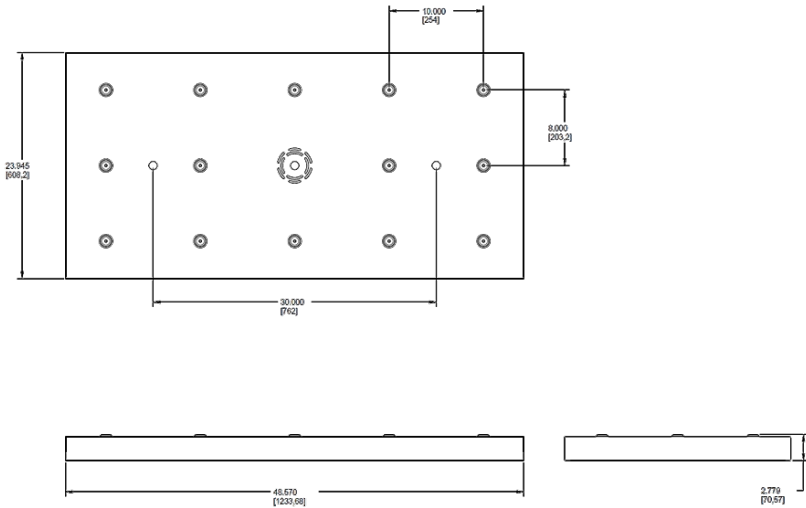
Compatibility:

For EZPAN fixtures with options, please consult factory for compatibility with mounting kits

Buy American Act Compliance:

RAB values USA manufacturing! Upon request, RAB may be able to manufacture this product to be compliant with the Buy American Act (BAA). Please contact customer service to request a quote for the product to be made BAA compliant.

Dimensions



Ordering Matrix

Family	Size
SMKEZPAN	2X4
	2X4 = 2' x 4'
	2X2 = 2' x 2'