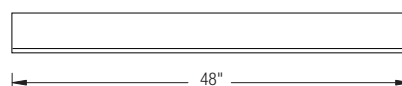
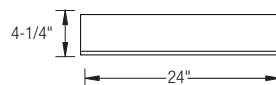


## 2' X 4' LED SURFACE MOUNT SPECIFICATION GRADE TROFFER



**4000**  
LUMENS  
**36**  
WATT

According to  
DLC Test Results

**5000**  
LUMENS  
**44**  
WATT

According to  
DLC Test Results

**6000**  
LUMENS  
**53**  
WATT

According to  
DLC Test Results

**8000**  
LUMENS  
**71**  
WATT

According to  
DLC Test Results

**CALCULATED**  
**L70**  
LIFETIME  
**83,000 HRS**

**CALCULATED**  
**L80**  
LIFETIME  
**50,000 HRS**



\* For list of qualified DLC  
fixture, please consult factory

The OSMT-LED is a high-quality yet economical surface-mounted troffer luminaire powered by LED lighting technology. An excellent highly efficient general illumination fixture ideal for office spaces, schools, hospitals, and many other indoor locations. Fixture is designed to flush mount onto drywall/hardpan ceilings.

### PRODUCT FEATURES:

- Fixture is cold-welded to provide extra strength and durability during installation and downstream maintenance
- Four keyway slots/mounting holes on the back of the housing provides several mounting options
- Mitred door frame prevents light leaks, and minimizes dust from entering fixture
- Constructed of one-piece ribbed unutilized housing and corners that interlock, preventing damage to luminaire
- Frosted 0.100" thick #12 pattern acrylic lens, standard
- Housing and door frame interface provides a superior mechanical light seal
- Post-painted with a 93% reflective white coat to improve fixture efficacy
- Rated at 85+ CRI and available in multiple CCTs
- Life tested to ensure light output of L70 up to 83,000 hrs and L80 up to 50,000 hrs

- All sides and corners are turned in and hemmed, removing sharp edges for safe handling and installation
- Tested to LM-79 and LM-80 standards
- LED lighting technology offers the highest return on initial investment over the lifetime of the fixture
- Emergency battery back-up comes pre-installed on the fixture and emergency push button is installed on the fixture for easy access and aesthetics.
- Dimmable down to 1% with compatible dimming systems
- LED light engine is completely removable and upgradable
- Four corner tie points are standard for safety wire support when required and built-in earthquake clips standard
- Same-day shipping on most options (Consult factory)

**OPTICS** - The OSMT-LED uses a prismatic acrylic lens to scatter the light emitted from the LED chips into functional light. The LED offered in the OSMT-LED has the highest return on initial investment compared to other standard lighting solutions. Lens is attached to a door frame which is easily pivoted and removable without the use of tools.

**DURABILITY** - Our heavy-duty 20-gauge steel housing is engineered for maximum strength and extended life. Fixture is cold-welded to provide extra strength and corners interlock to prevent aesthetic damage to the fixture and. Sides and corners are uniformly turned in and hemmed to remove sharp edges for safe handling and easy installation. Fixture flush mounts onto drywall/hardpan ceilings.

**PERFORMANCE** - The OSMT-LED powered lighting technologies offer a higher return on investment than any other lighting technology. The light engines found in the OSMT-LED are rated at 85+ CRI and available in multiple CCTs: 3000K, 3500K, 4000K and 5000K. All LEDs and LED fixtures are rated and tested to LM-79 and LM-80 standards. The LEDs are also binned to a 3-step MacAdam ellipses to achieve consistent color from fixture to fixture.

**THERMAL MANAGEMENT** - LED light engines are attached directly to the housing which keeps the engines cool. Our advanced thermal management system allows the light output of the LED engines to be maintained at 70% of initial lumens at 83,000 hours of operation.

**ELECTRICAL** - Powered by high-quality constant-current power LED drivers which are rated for 50 to 60Hz at 120-277V input, produce less than 20% THD, and have a power factor of .90 to 1.00.

**MAINTENANCE** - LED engines and driver can be accessed through the bottom by removing hinged door frame and driver box cover. LED engines are removable and upgradable even after fixture installation. Fixture can be regularly and safely wiped down to ensure optimal fixture performance.

**DIMMING** - The OSMT-LED comes standard with **DIM10**, 0-10V dimming on either 120 or 277V. Dimmable down to 1% of initial lumens. Also available in Lutron dimming options. Consult factory for dimmer compatibility. **LUTH** - Lutron Hilume Dimming down to 1% compatible with 3 wire and EcoSystem Controls available on all fixtures up to 50 Watts. **LUT2W** - Lutron 2 Wire Dimming down to 1% compatible with 2 wire and Forward Phase Control Systems available on all fixtures up to 50 Watts. **LUTFTB** - Lutron Hilume Fade to Black Dimming down to 1% compatible with EcoSystem Controls available on all fixtures up to 75 Watts. **DIMST** - Step Dimming allows fixtures to be turned on at 100% or 50% is available for fixtures up to 50 Watts. **ELDO10.1** - EldoLED SoloDrive 0-10V. Dimming down to .1%. available on all fixtures up to 100 Watts. **ELDODALI** - EldoLED PowerDrive 0-10V. Dimming down to .1%. available on all fixtures up to 100 Watts. **ELDODMX** - EldoLED PowerDrive Dimming down to .1%. available on all fixtures up to 100 Watts. Please see EldoLED website for wiring diagrams and a list of compatible DMX and Dali control systems.

**OPTIONS** - Fixtures can be shipped pre-installed with daylight harvesting controls, occupancy sensors, and/or power pack. Available manufacturer options include Leviton, Wattstopper, Hubbell Automation, and others.

**QUALITY CONTROL** - Every fixture is turned on and rigorously tested by our QC Department before shipping.

**WARRANTY** - Limited 5 Year Warranty



### Ordering Information: Example: 24-OSMT-LED-4000L-DIM10-MVOLT-30K-85

FIXTURE SIZE	SERIES	TYPE	LUMENS	DIMMING	VOLTAGE	CCT	CRI	EMERGENCY	OTHER OPTIONS
24 - 2' X 4'	OSMT-Oracle Surface Mount Troffer	LED	4000L - (4000 lumens) 5000L - (5000 lumens) 6000L - (6000 lumens) 8000L - (8000 lumens)	DIM10 - 0-10V Dimming * DIMST - Step Dimming * LUTH - Lutron Hilume * LUT2W - Lutron 2Wire LUTFTB - Lutron Fade to Black ELDO10.1 - EldoLED 0-10V ELDODALI - EldoLED DALI ELDODMX - EldoLED DMX	MVOLT 347* * Consult factory for details	30K - (3000K) 35K - (3500K) 40K - (4000K) 50K - (5000K)	85	O-EMG-LED  <b>LENS</b> A12 - A12 A19 - A19 A-SFW - Smooth Frosted White	FBF - Internal Fast Blow Fuse SBF - Internal Slow-Blow Fuse RIS - Radio Interference Suppressor GDF - Gasketed Door Frame USA - Made in America Compliance

\* DIMST, LUTH and LUT2W dimming options are  
only available for the fixtures up to 5000 lumens.

# CONTROL OPTIONS

## EASYFIT<sup>®</sup> by EnOcean

### Controls Options to be Installed on the Fixture

Self-powered sensors and switches, combined with LED fixture controllers and a commissioning tool, permit easy configuration, intelligent local control, and seamless integration into building automation systems.

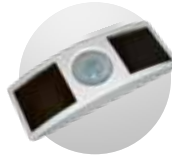


**LEDRU**  
LED Relay Zone  
Controller 0-10V



**LEDDU**  
LED Zone  
Controller 0-10V

### Controls Provided by EnOcean



**EOSCU**  
Occupancy Sensor  
Ceiling Mount



**EOSWU**  
Occupancy Sensor  
Wall Mount



**ELLSU**  
Daylight Sensor  
Ceiling Mount



**ESRPU/EDRP**  
Wall Switches



**LEVITON**  
Wall Switches  
902 MHz category



**NWC 300U**  
Navigan Wireless  
Commissioner

## legrand<sup>®</sup>

WATTSTOPPER<sup>®</sup>

### Controls Installed on the Fixture



#### LMFC-011

Fixture Will be Shipped Legrand Wattstopper DLM Enabled with LMFC-011 Module Controller Installed on the Fixture. Fixtures will be compatible with Legrand Wattstopper DLM Load Controllers, DLM Sensors, DLM Switches, DLM Remote Control, and DLM Configuration tool.

#### Switches



**LMSW-105** **LMDM-101**

#### Remote



**LMRH-105**

#### Configuration tool



**LMCT-100-2**

#### Plug Load Controllers



**LMPL-101**

**LMPL-201**

#### Sensors



**LMDC-100**

**LMLS-400** **LMLS-500**

#### FD-301

Fixture Will be Shipped with Legrand Wattstopper FD-301 (Integrated Daylight Dimming Photosensor) installed and FS-PP-V2 Fixture Power Pack.



#### FS-PP-V2



#### FM-105

Fixture Will be Shipped with Legrand Wattstopper FM-105 (Super HF Occupancy Sensor line voltage sensor that turns lighting on and off based on occupancy, and can hold lights off when sufficient daylight is available) installed.



#### FSP-202

Fixture Will be Shipped with Legrand Wattstopper FSP-202 (multi-level control based on motion and/or daylight contribution) installed.



#### FSP-212

Fixture Will be Shipped with Legrand Wattstopper FSP-212 (multi-level control based on motion and/or daylight contribution) installed.



LED

Control Options

# CONTROL OPTIONS



Philips EasySense sensors provide luminaire-level control with Occupancy sensing, Daylight harvesting, and Field task tuning.

## Controls Installed on the Fixture



### PHILIPS-XSR + SNS200-CMP

Fixture will be Shipped Sensor Ready with PHILIPS-XSR driver and EasySense SNS200-CMP Sensor which is Included to be Remote Mounted. Fixture May Only be Controlled with Philips Field App or Wireless Switches

### SRB

Fixture will be Shipped Sensor Ready with SRB Bridge. Fixture will be Compatible with EasySense Sensor SNS200-CMP which can be Added in the Field for Remote Mounting. Fixture May Only be Controlled with Philips Field App or Wireless Switches or any 0-10V. Wall Box Dimmer.



### SRB + SNS200-CMP

Fixture Will be Shipped Sensor Ready with PHILIPS SRB Bridge and EasySense SNS200-CMP Sensor which is Included to be Remote Mounted. Fixture May Only be Controlled with Philips Field App or Wireless Switches or any 0-10V. Wall Box Dimmer.

## Controls Provided by Philips



ZBT-S1AWH

ZBT-S2AWH

Illumra Wireless Switches



Philips Field App



Enlighted Smart Sensors features digital motion, ambient light, and temperature sensing, the device provides autonomous fixture-level control

## Controls Installed on the Fixture



### CU-E3-1R + SU-4E-00

Fixture Will be Shipped with Enlighted CU-E3-1R Control Unit Power Pack installed and SU-4E-00 Sensor provided (to be installed remotely). Fixture May be Controlled with Enlighted Gateway, Energy Manager or Enlighted Room Controller WS-2-00

### CU-E3-1R



Fixture Will be Shipped Sensor Ready with Enlighted CU-E3-1R Control Unit Power Pack. Fixture will be compatible with Enlighted SU-4E-00 Sensor which can be Added in the Field Remote Mounting. Fixture May be Controlled with Enlighted Gateway, Energy Manager or Enlighted Room Controller WS-2-00



### PHILIPS-XSR

Fixture Will be Shipped Sensor Ready with PHILIPS-XSR driver. Fixtures will be compatible with Enlighted CS-D2 Two-wire sensor which can be Added in the Field for Remote Mounting. Fixture May be Controlled with Enlighted Gateway, Energy Manager or Enlighted Room Controller WS-2-00.

## Controls Provided by Enlighted

### WS-2-00

Enlighted Room Controller



Gateway



Switch



Programmable with Laptop



PoE Network Switch



Energy Manager

LED

Control Options

# CONTROL OPTIONS



## Controls Installed on the Fixture



**FCJS-010**  
Individual  
Fixture Control

Fixture Will be Shipped LUTRON VIVE Enabled with LUTRON FCJS-010 0-10V Control Module Installed on the Fixture. Fixtures will be compatible with Lutron FC-SENSOR Occupancy/Daylight Sensor or FC-VSENSOR Vacancy/Daylight Sensor which can be Added in the Field for Remote Mounting. Fixture May be Controlled with any Vive control systems. Fixtures must be ordered with a 0-10V. Driver.



**FCJS-ECO**  
Individual  
Fixture Control

Fixture Will be Shipped LUTRON VIVE Enabled with LUTRON FCJS-ECO EcoSystem Control Module Control Module Installed on the Fixture. Fixtures will be compatible with Lutron FC-SENSOR Occupancy/Daylight Sensor or FC-VSENSOR Vacancy/Daylight Sensor which can be Added in the Field for Remote Mounting. Fixture May be Controlled with any Vive control systems. Fixtures must be ordered with a Lutron Driver.

## Controls Provided by Lutron



Lutron  
App



Vive Wireless Hub



DayLight  
Sensor



Ceiling Mount  
Occupancy Sensor



Ceiling Mount  
Occupancy/Daylight  
Sensor



Wall Mount  
Occupancy Sensor



Wall Mount  
Switch



Pico  
Remote



Fixture will be shipped with Leviton ZL027-N0W power control module installed on the fixture. Fixtures will be compatible with Leviton ZL00J-D0W sensor control module which can be added in the field for remote mounting. Fixture must be controlled with Leviton Intellect Keypad Room Controller, or Leviton Neuron App.



**ZL027-N0W**  
Power control module



**ZL00J-D0W**  
Sensor control module

## Leviton Keypad



**ZLDNK-1W**



**ZLDNK-2W**



**ZLDNK-4W**



**ZLDNK-8W**

Intellect™ Keypad Room  
Controller (Required)

## Leviton App



Neuron App

LED

Control Options

# PHOTOMETRY DATA

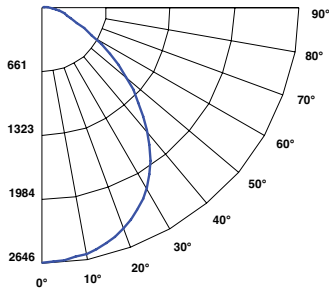
## 24-OSMT-LED-6000L-DIM10-120-40K

WATTAGE: **6006**

LUMENS: **53.2**

TOTAL LUMINAIRE EFFICACY: **113**

### Candle Power Distribution (Candelas)



### Spacing Criteria

0-180 : **1.22**  
90-270 : **1.26**  
Diagonal : **1.28**

**EFFICACY: 113 LM/W**

### Zonal Lumens Summary

Zone	Lumens	%Lamp	%Fixt
0-30°	2050.31	N.A.	34.10
0-40°	3293.69	N.A.	54.80
0-60°	5206.39	N.A.	86.70
0-90°	6005.77	N.A.	100.00
0-180°	6005.77	N.A.	100.00

### Luminance Data (cd/sq.m)

Angle In Degrees	Average 0°	Average 45°	Average 90°
45°	2491	2790	2947
55°	1695	2038	2294
65°	1280	1202	1597
75°	1266	1064	1418
85°	945	1006	1607

### Candela Tabulation

	0	45	90
0	2642.71	2642.71	2642.71
5	2628.41	2631.41	2636.33
15	2532.04	2545.54	2557.84
25	2322.83	2351.39	2371.73
35	1935.07	2001.23	2041.40
45	1310.33	1467.62	1550.12
55	723.12	869.80	978.64
65	402.55	377.85	501.96
75	243.77	204.79	272.99
85	61.28	65.21	104.17
90	2.26	2.48	2.72

### Coefficients of Utilization - Zonal Cavity Method

Effective Floor Cavity Reflectance 20% = PF

RC	RW	80%				70%				50%				30%				10%				0%	
		70%	50%	30%	10%	70%	50%	30%	10%	50%	30%	10%	50%	30%	10%	50%	30%	10%	50%	30%	10%	0%	0%
0	119	119	119	119	116	116	116	116	111	111	111	106	106	106	102	102	102	100	100	100	100	100	100
1	110	106	102	98	107	103	100	97	99	96	94	95	93	91	92	90	88	86	86	86	86	86	86
2	101	94	88	83	99	92	86	82	88	84	80	85	81	78	82	79	76	74	74	74	74	74	74
3	93	84	76	70	91	82	75	70	79	73	68	76	71	67	74	70	66	64	64	64	64	64	64
4	86	75	67	61	84	74	66	60	71	65	60	69	63	59	67	62	58	56	56	56	56	56	56
5	79	68	59	53	77	67	59	53	64	58	52	63	57	52	61	55	51	49	49	49	49	49	49
6	74	61	53	47	72	60	53	47	59	52	46	57	51	46	56	50	46	44	44	44	44	44	44
7	69	56	48	42	67	55	47	42	54	47	42	52	46	41	51	45	41	39	39	39	39	39	39
8	64	51	43	38	63	51	43	38	49	42	37	48	42	37	47	41	37	35	35	35	35	35	35
9	60	47	39	34	59	47	39	34	46	39	34	45	38	34	44	38	34	32	32	32	32	32	32
10	56	44	36	31	55	43	36	31	42	36	31	41	35	31	41	35	31	29	29	29	29	29	29

RC - Ceiling Cavity Reflectance

RW - Wall Reflectance

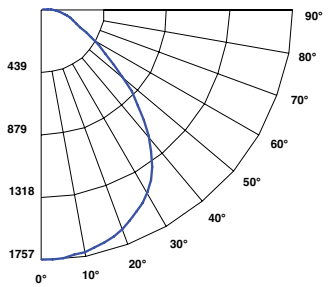
## 24-OSMT-LED-4000L-DIM10-120-40K

WATTAGE: **35.5**

LUMENS: **3999**

TOTAL LUMINAIRE EFFICACY: **113**

### Candle Power Distribution (Candelas)



### Spacing Criteria

0-180 : **1.26**  
90-270 : **1.24**  
Diagonal : **1.28**

**EFFICACY: 113 LM/W**

### Zonal Lumens Summary

Zone	Lumens	%Lamp	%Fixt
0-30°	1362.53	N.A.	34.10
0-40°	2188.77	N.A.	54.70
0-60°	3465.41	N.A.	86.70
0-90°	3999.03	N.A.	100.00
0-180°	3999.03	N.A.	100.00

### Luminance Data (cd/sq.m)

Angle In Degrees	Average 0°	Average 45°	Average 90°
45°	1815	1930	1930
55°	1283	1466	1493
65°	949	884	1047
75°	946	738	930
85°	968	911	1016

### Candela Tabulation

	0	45	90
0	1757.289	1757.289	1757.289
5	1752.540	1750.490	1751.180
15	1697.390	1697.260	1697.120
25	1571.280	1578.920	1570.590
35	1352.600	1356.680	1345.620
45	955.010	1015.210	1015.200
55	547.490	625.690	636.850
65	298.360	278.020	329.060
75	182.180	142.010	179.090
85	62.730	59.090	65.900
90	5.260	4.510	1.830

### Coefficients of Utilization - Zonal Cavity Method

Effective Floor Cavity Reflectance 20% = PF

RC	RW	80%				70%				50%				30%				10%				0%	
		70%	50%	30%	10%	70%	50%	30%	10%	50%	30%	10%	50%	30%	10%	50%	30%	10%	50%	30%	10%	0%	0%
0	119	119	119	119	116	116	116	116	111	111	111	106	106	106	102	102	102	100	100	100	100	100	100
1	110	106	102	98	107	103	100	97	99	96	94	95	93	91	92	90	88	86	86	86	86	86	86
2	101	94	88	83	99	92	86	82	88	84	80	85	81	78	82	79	76	74	74	74	74	74	74
3	93	84	76	70	91	82	75	70	79	73	68	76	71	67	74	70	66	64	64	64	64	64	64
4	86	75	67	61	84	74	66	60	71	65	59	69	63	59	67	62	58	56	56	56	56	56	56
5	79	68	59	53	77	66	59	53	64	58	52	63	57	52	61	55	51	49	49	49	49	49	49
6	74	61	53	47	72	60	52	47	59	52	46	57	51	46	56	50	46	44	44	44	44	44	44
7	69	56	48	42	67	55	47	42	54	47	42	52	46	41	51	45	41	39	39	39	39	39	39
8	64	51	43	38	63	51	43	38	49	42	37	48	42	37	47	41	37	35	35	35	35	35	35
9	60	47	39	34	59	47	39	34	46	39	34	45	38	34	44	38	34	32	32	32	32	32	32
10	56	44	36	31	55	43	36	31	42	36	31	41	35	31	41	35	31	29	29	29	29	29	29

RC - Ceiling Cavity Reflectance

RW - Wall Reflectance