

T5820-E



Color:



Black

UPC Code: 07847745024

Country Of Origin: China

NEMA:
5-20R



T5820-E

Brand Features

Leviton's duplex receptacles are designed for a chic appearance, quick installation and durability. The impact-resistant thermoplastic design allows for a long service life and high performance in homes, offices, schools and other settings.

Item Description

20A 125V, NEMA 5-20R, 2P, 3W, Tamper-Resistant, Duplex receptacle. Straight blade, Residential grade, Self grounding, Side wired only, Steel strap - BLACK

Technical Information

Product Features

Grounding: Self-Grounding

Face Material: Thermoplastic Nylon

Color: Black

Device Type: Duplex Receptacle

Termination: Side

Wire: 3

Feature: Tamper-Resistant

NEMA: 5-20R

Body Material: Thermoplastic Nylon

Product Type: Standard

Voltage: 125 Volt

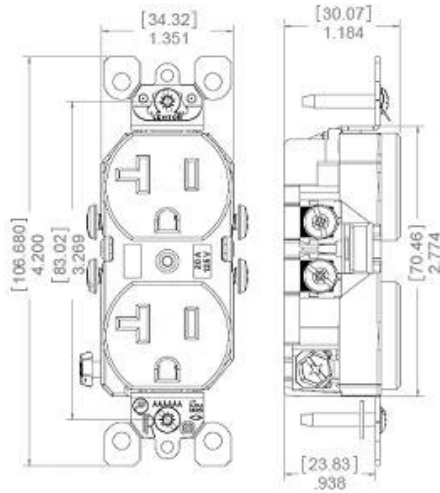
Amperage: 20 Amp

Standards and Certifications: UL/CSA/NOM

Pole: 2

Features and Benefits

- Mechanical shutter mechanism prevents access to contacts unless a two-pronged plug is inserted, helping ensure that foreign objects will be locked out
- TR symbol on receptacle face assures they meet the NEC Section 406.11 code requirements
- Ultrasonically welded for additional assembly security
- Base and face made of high impact thermoplastic
- Convenient break-off plaster ears for best flush alignment
- Self-grounding clip staked on, will never fall off
- Easily accessible break-off tabs when split feed wiring is required; allows easy two circuit conversion



TO INSTALL:

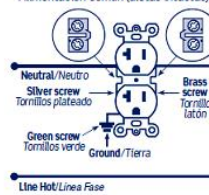
WARNING: IF YOU ARE NOT SURE ABOUT ANY PART OF THESE INSTRUCTIONS, CONSULT A QUALIFIED ELECTRICIAN.

FOR SEPARATE FEED

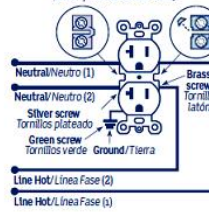
CONVERSION ONLY: Our outlet is provided with a break-off fin located between the two brass terminal screws. If you want to have the top outlet and the bottom outlet controlled by two different hot wires (two circuits), remove the break-off fin before wiring. With needle-nose pliers, bend fin back and forth until it breaks off.

- 1. WARNING:** TO AVOID FIRE, SHOCK, OR DEATH: TURN OFF POWER AT CIRCUIT BREAKER OR FUSE AND TEST THAT THE POWER IS OFF BEFORE WIRING!
2. Remove insulation per strip gauge on device (about 5/8" (1.6 cm)).
3. Connect wires per WIRING DIAGRAM as follows: Loop wires clockwise 3/4 turn around terminal screws. BLACK (hot) wire to BRASS screw. WHITE (neutral) wire to SILVER screw. GREEN or BARE (ground) wire to GREEN screw. Firmly tighten screws over wire loops. Terminal screws accept up to #12 AWG copper or copper clad wire.
4. Mount device using long mounting screws. Attach wallplate (not included).
5. Restore power at circuit breaker or fuse. Installation is complete.

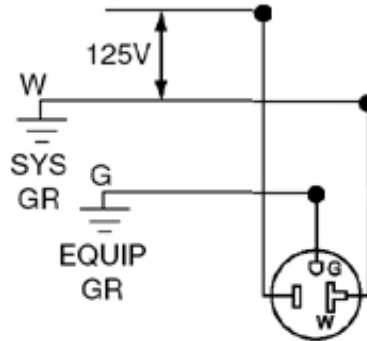
Common feed (Fins intact) Alimentación Común (aletas intactas)



Separate feed (Remove HOT fin only) Alimentación Separada (Sólo quite la aleta FASE)



Wiring Diagram



5-20R

SPECIFICATION SUBMITTAL

JOB NAME:	CATALOG NUMBERS:	
JOB NUMBER:		

Leviton Manufacturing Co., Inc.

201 North Service Road, Melville, NY 11747

Teléfono: +1-800-323-8920 · FAX: +1-800-832-9538 · Tech Line (8:30AM-7:30PM E.S.T. Monday-Friday): +1-800-824-3005

Leviton Manufacturing of Canada, Ltd.

165 Hymus Boulevard, Pointe Claire, Quebec H9R 1E9 · Telephone: +1-800-469-7890 ·

FAX: +1-800-824-3005 · www.leviton.com/canada

Leviton S. de R.L. de C.V.

Lago Tana 43, Mexico DF, Mexico CP 11290 · Tel.: (+52)55-5082-1040 · FAX: (+52)5386-

1797 · www.leviton.com.mx

Visit our Website at: www.leviton.com

© 2012 Leviton Manufacturing Co., Inc. Todos los derechos reservados. Subject to change without notice.

Leviton has a global presence.

If you would like to know where your local Leviton office is located please go to:

www.leviton.com/international/contacts/

