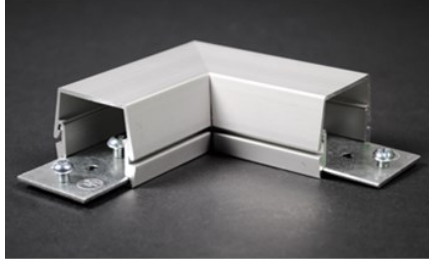

AL2000 FLAT ELBOW

AL2011 | [Wiremold](#)



FEATURES & BENEFITS

Right angle turn on same surface. Two AL2001 Couplings included.



PRODUCT
ENVIRONMENTAL PROFILE

- This product meets the material restrictions of RoHS

SPECIFICATIONS

GENERAL INFO

Available Colors:

AL2011 - Satin Anodized

Product Series: AL2000, AL2400

Component Type: Fittings & Accessories

LISTING AGENCIES/THIRD PARTY CERTIFICATIONS

RoHS: Yes

TECHNICAL INFORMATION

Material: Aluminum

Capacity: Single-Channel