



CorePro LED PL 4pin 2pin

5PL-S/LED/13H/827/IF5/P/2P 20/1

Philips LED T8 InstantFit Lamps are an ideal energy saving choice for existing linear fluorescent fixtures.

Product data

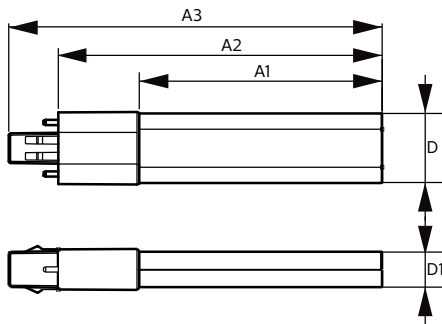
General Information		Lamp Current (Min)	
Cap-Base	GX23 [GX23]		15 mA
RoHS mark	RoHS mark	Starting Time (Nom)	0.5 s
Nominal Lifetime (Nom)	50000 h	Warm Up Time to 60% Light (Nom)	0.5 s
Switching Cycle	50000X	Power Factor (Nom)	0.9
B50L70	50000 h	Voltage (Nom)	120-277 V
Light Technical		Temperature	
Color Code	827 [CCT of 2700K]	T-Ambient (Max)	45 °C
Beam Angle (Nom)	120 °	T-Ambient (Min)	-20 °C
Initial lumen (Nom)	520 lm	T-Storage (Max)	65 °C
Luminous Flux (Rated) (Nom)	520 lm	T-Storage (Min)	-40 °C
Rated Beam Angle	120 °	T-Case Maximum (Nom)	75 °C
Correlated Color Temperature (Nom)	2700 K	Controls and Dimming	
Color Consistency	<6	Dimmable	No
Color Rendering Index (Nom)	82	Mechanical and Housing	
LLMF At End Of Nominal Lifetime (Nom)	70 %	Height	15.8 mm
Operating and Electrical		Approval and Application	
Input Frequency	50 to 60 Hz	Energy Saving Product	Yes
Power (Rated) (Nom)	5 W		
Lamp Current (Max)	50 mA		

CorePro LED PL 4pin 2pin

Approbation Marks	UL certificate RoHS compliance
Product Data	
Order product name	5PL-S/LED/13H/827/IF5/P/2P 20/1
EAN/UPC - Product	046677529512
Order code	529511
Numerator - Quantity Per Pack	1

Numerator - Packs per outer box	20
Material Nr. (12NC)	929001862804
Net Weight (Piece)	0.043 kg
Model Number	9290018628

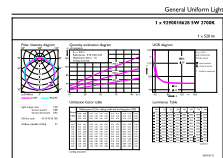
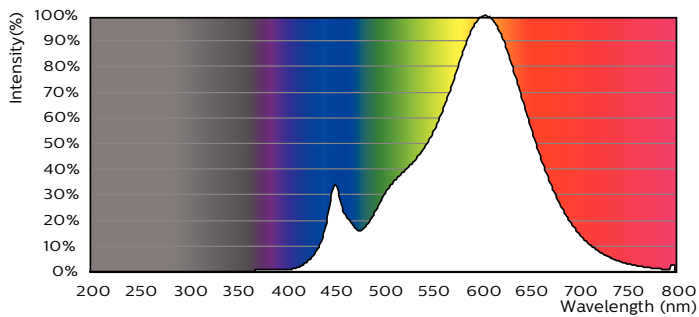
Dimensional drawing



PLED PLS 120-277V 5-13W 580lm 2700K GX23

Product	D	D1	A1	A2	A3
5PL-S/LED/13H/827/IF5/P/2P	31.1 mm	15.8 mm	108 mm	144 mm	166 mm
20/1					

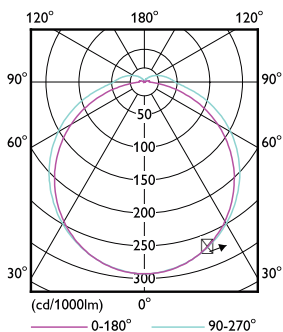
Photometric data



020207 Photometric 13 Philips Lighting NV Page 1/1

LEDtube PLS 5W GX23 827 2P 12D ND

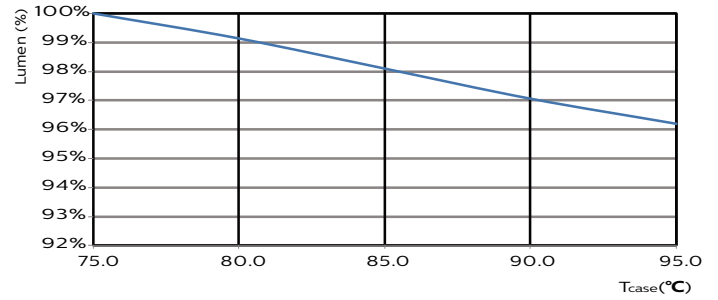
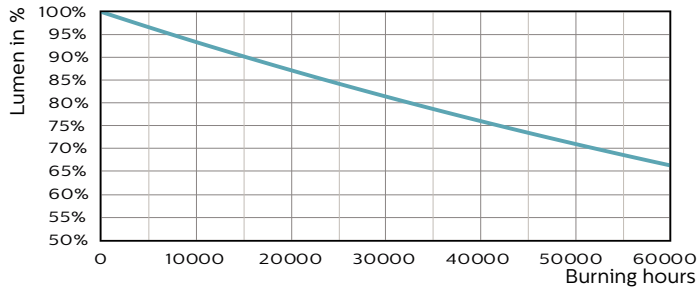
LEDtube PLS 5W GX23 827 2P 12D ND



LEDtube PLS 5W GX23 827 2P 12D ND

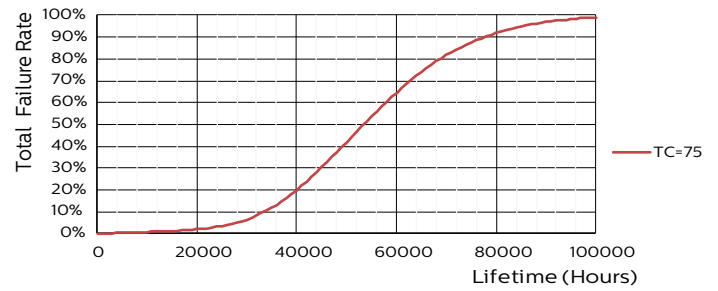
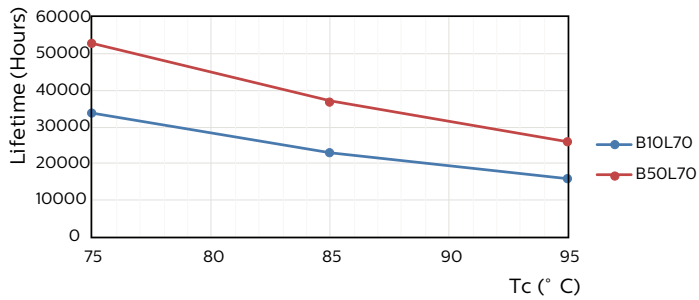
CorePro LED PL 4pin 2pin

Lifetime



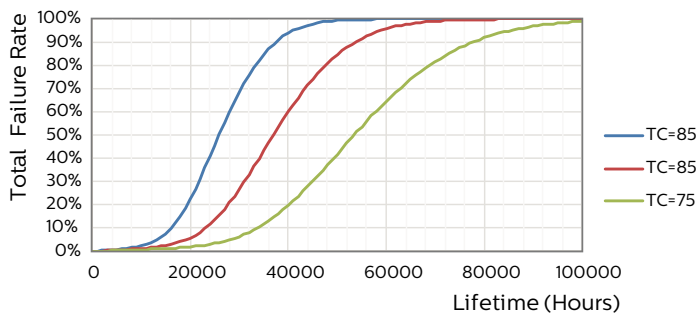
LEDtube PLS 5W GX23 827 2P 12D ND

LEDtube PLS 5W GX23 827 2P 12D ND



LEDtube PLS 5W GX23 827 2P 12D ND

LEDtube PLS 5W GX23 827 2P 12D ND



LEDtube PLS 5W GX23 827 2P 12D ND

CorePro LED PL 4pin 2pin

