



# CorePro LED PL 4pin 2pin

## 5.5PL-C/LED/13H/827/IF5/P/4P 20/1

Philips LED T8 InstantFit Lamps are an ideal energy saving choice for existing linear fluorescent fixtures.

### Product data

General Information		Starting Time (Nom)	
Cap-Base	G24Q [ G24q]		0.5 s
Nominal Lifetime (Nom)	50000 h	Warm Up Time to 60% Light (Nom)	0.5 s
Switching Cycle	50000X	Power Factor (Nom)	0.9
B50L70	50000 h	Voltage (Nom)	14-60 V
Light Technical		Temperature	
Color Code	827 [ CCT of 2700K]	T-Ambient (Max)	45 °C
Beam Angle (Nom)	150 °	T-Ambient (Min)	-20 °C
Initial lumen (Nom)	520 lm	T-Storage (Max)	65 °C
Luminous Flux (Rated) (Nom)	520 lm	T-Storage (Min)	-40 °C
Rated Beam Angle	150 °	T-Case Maximum (Nom)	75 °C
Correlated Color Temperature (Nom)	2700 K	Controls and Dimming	
Color Consistency	<6	Dimmable	No
Color Rendering Index (Nom)	82	Mechanical and Housing	
LLMF At End Of Nominal Lifetime (Nom)	70 %	Height	27 mm
Operating and Electrical		Approval and Application	
Input Frequency	25000-100000 Hz	Energy Saving Product	Yes
Power (Rated) (Nom)	5.5 W	Approbation Marks	UL certificate RoHS compliance
Lamp Current (Max)	280 mA		
Lamp Current (Min)	130 mA		

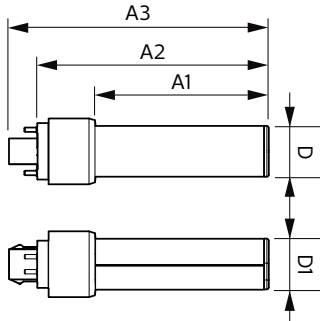
# CorePro LED PL 4pin 2pin

## Product Data

Order product name	5.5PL-C/LED/13H/827/IF5/P/4P 20/1
EAN/UPC - Product	046677532390
Order code	532390
Numerator - Quantity Per Pack	1
Numerator - Packs per outer box	20

Material Nr. (12NC)	929001885304
Net Weight (Piece)	0.060 kg
Model Number	9290018853

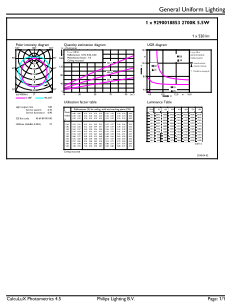
## Dimensional drawing



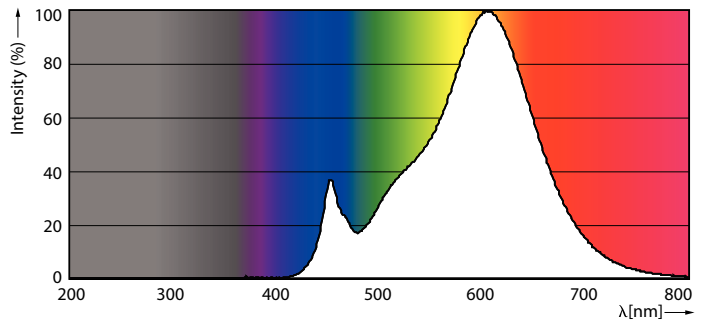
PLED PLC-H 5-13W 550lm 2700K G24q

Product	D	D1	A1	A2	A3
5.5PL-C/LED/13H/827/IF5/P/4P 20/1	27 mm	27 mm	91.5 mm	122.4 mm	137.4 mm

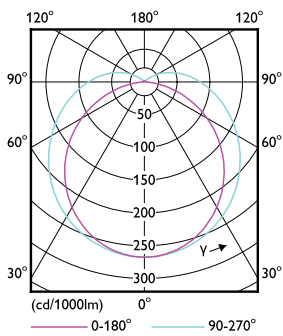
## Photometric data



LEDtube PLC 13H 5.5W G24Q 827 15D ND



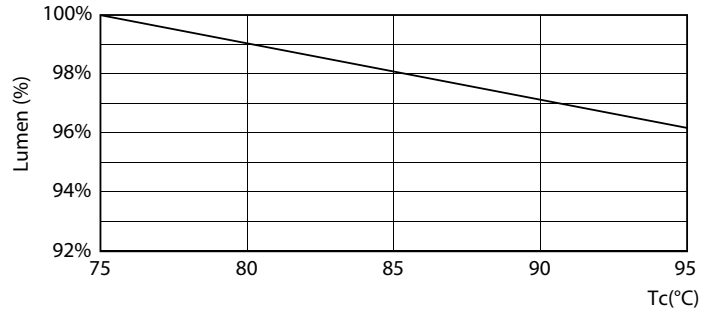
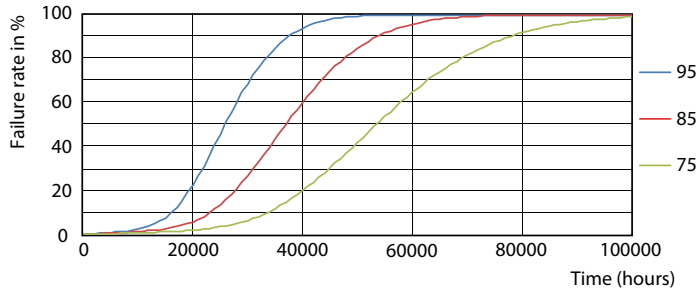
LEDtube PLC 13H 5.5W G24Q 827 15D ND



LEDtube PLC 13H 5W GX23-2 827 15D ND

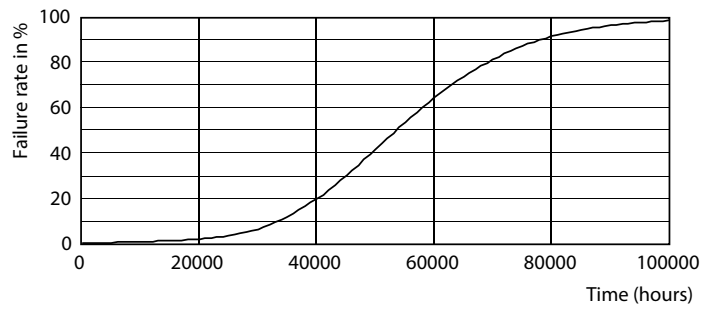
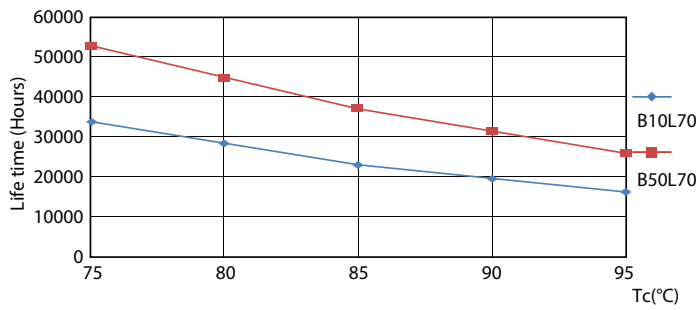
# CorePro LED PL 4pin 2pin

## Lifetime



LEDtube PLC 13H 5.5W G24Q 827 15D ND

LEDtube PLC 13H 5.5W G24Q 827 15D ND



LEDtube PLC 13H 5.5W G24Q 827 15D ND

LEDtube PLC 13H 5W GX23-2 827 15D ND



LEDtube PLC 13H 5W GX23-2 827 15D ND

## CorePro LED PL 4pin 2pin

