

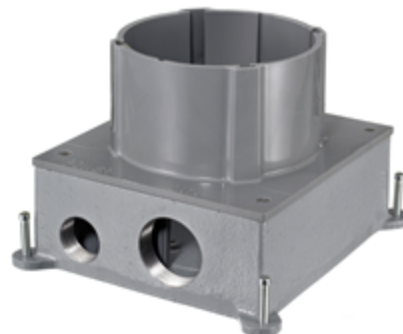
Floor Boxes  
 Hubbell SystemOne Metal and Non-Metallic  
 Concrete Floor Boxes

# HUBBELL



### Features

- Corrosion resistant for on-grade applications
- Powder coat painted box base
- Supplied with concrete cover and closure plugs
- Convenient cubic inch capacity (cm<sup>3</sup>) markings on interior of box



### Ordering Information

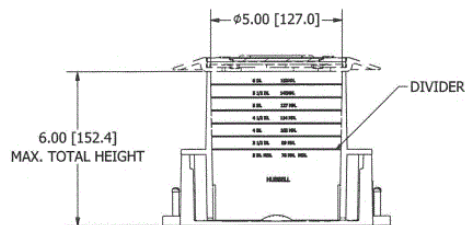
Description	Material	UPC Number	Catalog Number
Metallic, Floor Boxes	Cast Iron	783585371672	S1CFB

### Listings

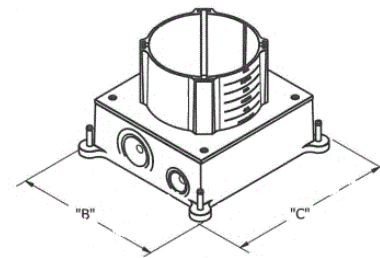
UL File Number E92074  
 CSA File Number LR18416

### Specifications

Min. Depth of Pour	3.50" (88.9)
Cubic Inch	156.0 cu. in. (2556.4 cm <sup>3</sup> )
Power Entries	1" NPT Access Holes



FLOOR BOX WITH COVER  
 ASSEMBLY INSTALLED AT MAXIMUM HEIGHT



S1CFB, S1SFBxx, S1SFBVxx

### Online Resources

Customer Use Drawing  
 eCatalog  
 Installation Instructions

Dimensions in Inches (mm)

Hubbell Wiring Device-Kellems • Hubbell Incorporated (Delaware) • 40 Waterview Drive • Shelton, CT 06484

Phone (800) 288-6000 • Fax (800) 255-1031 • Specifications subject to change without notice.

