



CorePro LEDtube MainsFit T8

14T8/COR/48-830/MF17/G 10/1

Philips CorePro MainsFit (UL Type-B) T8 LED lamps use a double-ended design which significantly simplifies installation, saving installation time and costs. This ballast bypass product replaces either T8 or T12 lamps in fixtures containing shunted or non-shunted G13 (medium bi-pin) lamp holders for over 40% energy savings.

Product data

| General Information | | Lamp Current (Max) | |
|---------------------------------------|----------------------------------|---------------------------------|-----------|
| Base | G13 [Medium Bi-Pin Fluorescent] | Lamp Current (Max) | 130 mA |
| Nominal Lifetime (Nom) | 50000 h | Lamp Current (Min) | 47 mA |
| Switching Cycle | 50000X | Starting Time (Nom) | 0.5 s |
| B50L70 | 50000 h | Warm Up Time to 60% Light (Nom) | 0.5 s |
| Light Technical | | Power Factor (Nom) | 0.9 |
| Color Code | 830 [CCT of 3000K] | Voltage (Nom) | 120-277 V |
| Beam Angle (Nom) | 240 ° | Temperature | |
| Initial lumen (Nom) | 1700 lm | T-Ambient (Max) | 45 °C |
| Luminous Flux (Rated) (Nom) | 1700 lm | T-Ambient (Min) | -20 °C |
| Rated Beam Angle | 240 ° | T-Storage (Max) | 65 °C |
| Correlated Color Temperature (Nom) | 3000 K | T-Storage (Min) | -40 °C |
| Color Consistency | <6 | T-Case Maximum (Nom) | 70 °C |
| Color Rendering Index (Nom) | 80 | Controls and Dimming | |
| LLMF At End Of Nominal Lifetime (Nom) | 70 % | Dimmable | No |
| Operating and Electrical | | Mechanical and Housing | |
| Input Frequency | 50 to 60 Hz | Product Length | 1200 mm |
| Power (Rated) (Nom) | 14 W | | |

CorePro LEDtube MainsFit T8

Approval and Application

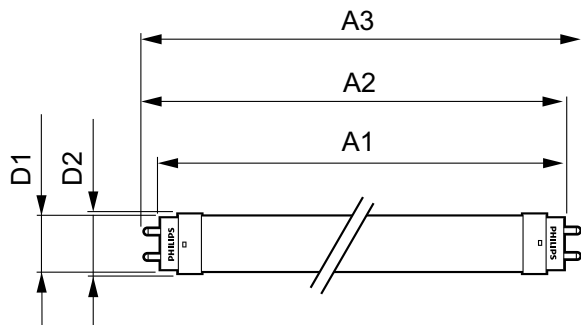
| | |
|-----------------------|---|
| Energy Saving Product | Yes |
| Approbation Marks | RoHS compliance UL certificate DLC compliance |

Product Data

| | |
|--------------------|-----------------------------|
| Order product name | 14T8/COR/48-830/MF17/G 10/1 |
| EAN/UPC - Product | 046677477318 |

| | |
|---------------------------------|--------------|
| Order code | 477315 |
| Numerator - Quantity Per Pack | 1 |
| Numerator - Packs per outer box | 10 |
| Material Nr. (12NC) | 929001845434 |
| Net Weight (Piece) | 0.220 kg |
| Model Number | 9290018454A |

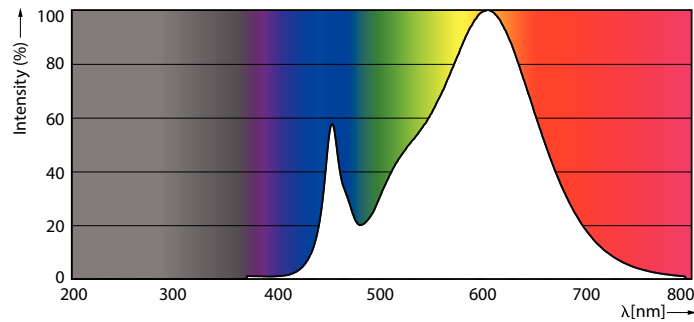
Dimensional drawing



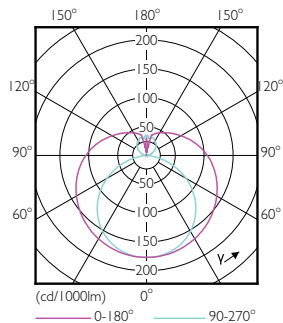
TLED IF CorePro 4ft 1700lm 3000K

| Product | D1 | D2 | A1 | A2 | A3 |
|-----------------------------|---------|-------|---------|---------|---------|
| 14T8/COR/48-830/MF17/G 10/1 | 25.7 mm | 28 mm | 1198 mm | 1205 mm | 1212 mm |

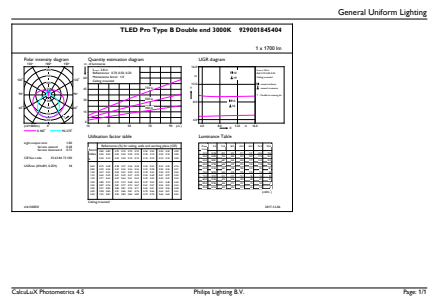
Photometric data



LEDtube PLC 400mm 16-5W 2G11 830 2000lm



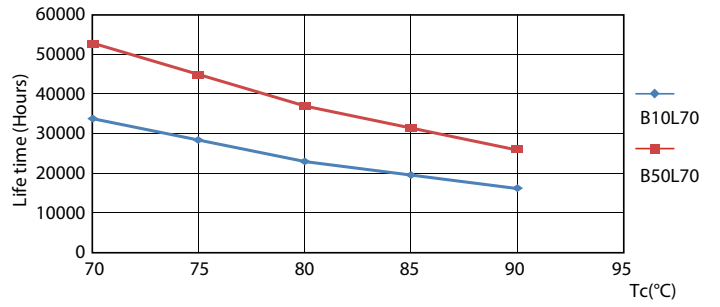
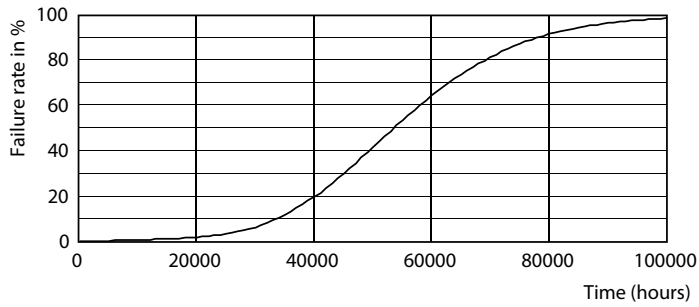
LEDtube 14W G13 830 ND BB17



LEDtube 14W G13 830 ND BB17

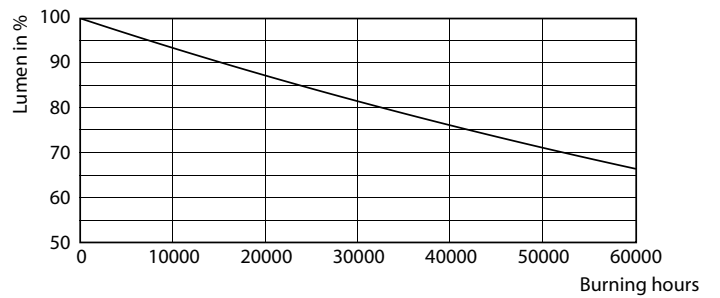
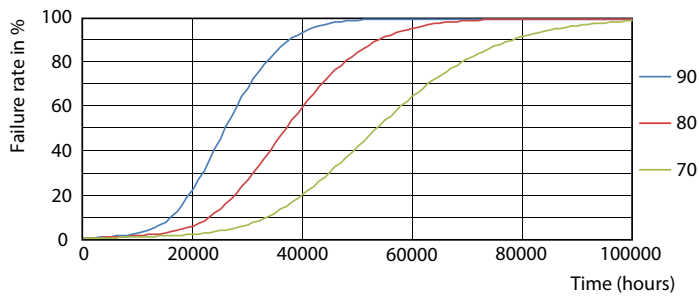
CorePro LEDtube MainsFit T8

Lifetime



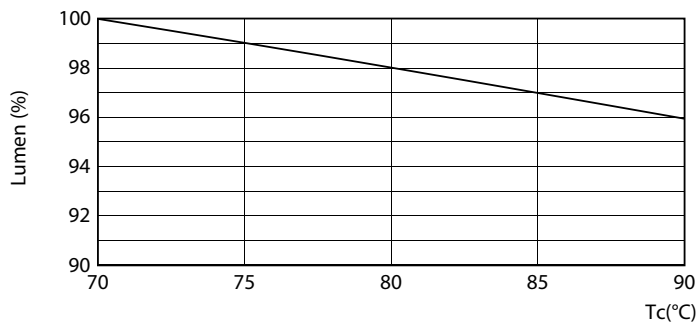
LEDtube 14W G13 830-850 ND BB17-18

LEDtube 14W G13 830-850 ND BB17-18



LEDtube 14W G13 830-850 ND BB17-18

LEDtube 14W G13 830-850 ND BB17-18



LEDtube 14W G13 830-850 ND BB17-18

CorePro LEDtube MainsFit T8

