

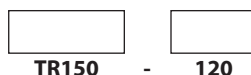
Magnetic Transformer

TR SERIES

PROJECT:	
TYPE:	
CATALOG NUMBER:	
SOURCE:	
NOTES:	

CATALOG NUMBER LOGIC

Example



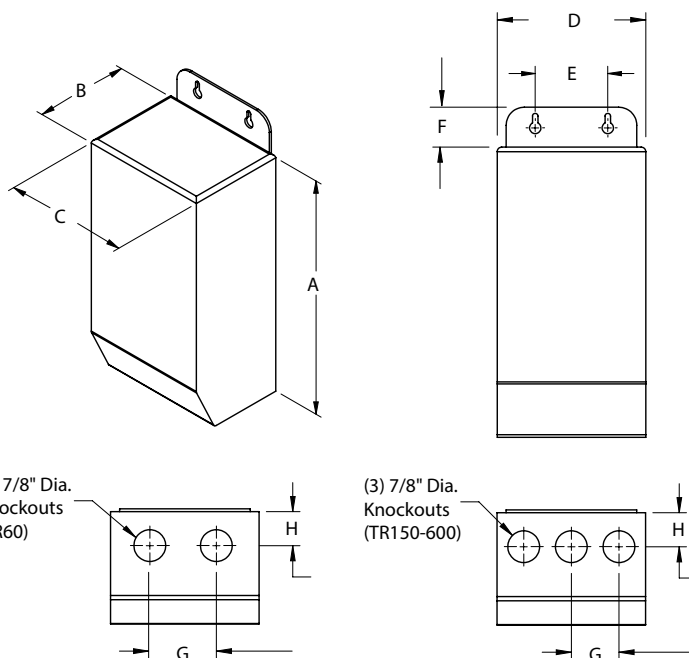
Series

- TR60** - 60W Magnetic Transformer
- TR150** - 150W Magnetic Transformer
- TR300** - 300W Magnetic Transformer
- TR600** - 600W Magnetic Transformer

Input Voltage

- 120** - 120 Volt
- 277** - 277 volt

DIMENSIONS



TRANSFORMER DATA

All dimensions indicated on this submittal are nominal.
Contact Technical Sales if you require more stringent specifications.

Series	Input Voltage	Max. Load	Circuit Breaker	Weight	Height A	Depth B	C	D	E	F	G	H
TR60	120V	60W	8A	3.7 lbs.	7-1/2"	2-15/16"	3"	3-7/64"	1-1/2"	1-1/16"	1-1/2"	3/4"
TR150	120V	150W	25A	6 lbs.	8"	3-3/32"	4-3/32"	5-1/2"	2"	1-1/8"	1-5/16"	15/16"
TR300	120V	300W	25A	7.13 lbs.	8"	3-3/32"	4-3/32"	5-1/2"	2"	1-1/8"	1-5/16"	15/16"
TR600	120V	600W	25A	14.9 lbs.	9-13/32"	4-3/32"	4-19/32"	5-3/4"	2"	1-1/16"	1-1/2"	1-1/4"
TR60	277V	60W	8A	3.7 lbs.	7-1/2"	2-15/16"	3"	3-7/64"	1-1/2"	1-1/16"	1-1/2"	3/4"
TR150	277V	150W	25A	6 lbs.	8"	3-3/32"	4-3/32"	5-1/2"	4-1/8"	1-1/8"	1-5/16"	15/16"
TR300	277V	300W	25A	7.13 lbs.	8"	3-3/32"	4-3/32"	5-1/2"	4-1/8"	1-1/8"	1-5/16"	15/16"
TR600	277V	600W	25A	14.9 lbs.	9-13/32"	4-3/32"	4-19/32"	5-3/4"	4-5/8"	1-1/16"	1-1/2"	1-1/4"

SPECIFICATIONS

Housing

Stainless steel, NEMA Outdoor 3R rated enclosure. [2] (TR60) or [3] (TR150-600) bottom entry 7/8" knockouts provide access to wiring compartment. Riveted, hinged cover opens vertically from bottom to top for service access.

Transformer

Fully encapsulated, Class B insulated, low voltage magnetic transformer. 120VAC or 277VAC input. 12VAC output (fully loaded). 0.6A (120VAC) or 0.3A (277VAC) maximum no load input current. Manual thermal reset. Secondary circuit breaker. Enclosure temperature <65° C when fully loaded (in 40° C ambient). For LED sourced products, do not exceed

more than 80% of the maximum load of the transformer.

For use with halogen and **BKSSL** products. Fully dimmable utilizing magnetic low voltage dimmers. Consult fixture specification for dimming capability.

Output Wiring

See B-K Lighting Low Voltage Design Guide on reverse.

Warranty

Limited five year warranty.

Certification and Listings

Nema Type 3R Enclosure. Suitable for indoor and outdoor use. UL Listed to ANSI/UL Standard 1012.



B-K LIGHTING

40429 Brickyard Drive • Madera, CA 93636 • USA
559.438.5800 • FAX 559.438.5900
www.bklighting.com • info@bklighting.com

SUBMITTAL DATE
02-06-2018

SUBMITTAL NUMBER
SUB-2067-00

THIS DOCUMENT CONTAINS PROPRIETARY INFORMATION OF B-K LIGHTING, INC. AND ITS RECEIPT OR POSSESSION DOES NOT CONVEY ANY RIGHTS TO REPRODUCE, DISCLOSE ITS CONTENTS, OR TO MANUFACTURE, USE OR SELL ANYTHING IT MAY DESCRIBE. REPRODUCTION, DISCLOSURE OR USE WITHOUT SPECIFIC WRITTEN AUTHORIZATION OF B-K LIGHTING, INC. IS STRICTLY FORBIDDEN.

LVG LOW VOLTAGE GUIDE

Many B-K Lighting fixtures operate on 12 volts. Taking advantage of these energy-saving fixtures requires appropriate care in planning the electrical wiring system. To maintain expected lamp performance, we recommend the following procedures in sizing your low-voltage wiring system.

SIZING OF LOW VOLTAGE WIRING

1. Locate and plot fixtures on plan. Choose the lighting equipment necessary to create the desired lighting effects. Mark lamp wattage for each fixture location.
2. Identify potential transformer locations. The ideal locations are those which provide for the shortest possible low voltage distances (inconspicuous areas, behind rocks, shrubbery, etc., within the landscape). UPM™, Power Pipe™, Power Pipe II™, or, if available, electronic transformers integral in the fixture are good ways to hide the transformer and reduce voltage drop problems.
3. Add the total wattage for the proposed low voltage run. Measure the wire lengths from the transformer to the fixture locations. Find the distance to the "CENTER OF LOAD" of the low voltage run.

$$\text{CENTER OF LOAD} = \frac{\text{Distance from first to last fixture}}{(2) \text{ Two}} + \text{Distance from transformer to first fixture}$$

4. Using the B-K Lighting Wire Selection Table, select the wattage column which applies. Look down the column stopping at a distance, in feet, that is equal or greater than the "CENTER OF LOAD" distance. Look across to find the proper wire size for your layout.

Note: In the event of multiple runs from a given transformer, treat each run separately.

12-VOLT WIRE SELECTION TABLE

WIRE SIZE	TOTAL WATTAGE																
	12	20	24	35	40	50	60	70	80	100	105	120	140	150	160	200	250
12	178	106	89	60	53	42	35	30	26	21	20	17	15	13	—	—	—
10	283	169	141	96	85	67	56	48	42	33	32	28	24	22	19	17	13
8	450	269	225	154	135	107	90	77	67	54	51	45	38	36	31	27	21
6	715	428	357	245	214	171	143	122	107	85	81	71	61	57	49	42	34

CENTER OF LOAD WIRING DISTANCES IN FEET

The Wire Selection Table provided is based on a maximum allowable voltage drop of 5%. Electrical designs which allow greater than 5% voltage drop, reduce rated light output beyond acceptable levels.

The importance of the proper wire selection is demonstrated below. Both examples have the same total watts and identical overall lengths of wire run, yet require different wire sizes, or multiple wire runs, to operate within the 5% maximum voltage drop B-K Lighting criteria.

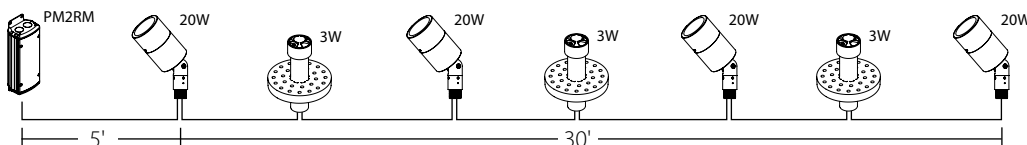
Note: Acceptable voltage range is 11.4 VAC minimum and 12.6 VAC maximum.

EXAMPLE:

Total wattage:
(20w x 4) + (3w x 3) = 89 watts

CENTER OF LOAD:
 $\left(\frac{30'}{2}\right) + 5' = 20'$

SINGLE WIRE RUN:
12 gauge

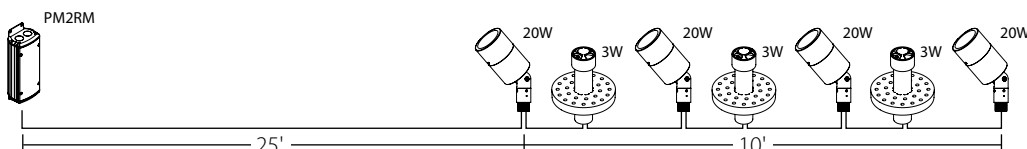


EXAMPLE

Total wattage:
(20w x 4) + (3w x 3) = 89 watts

CENTER OF LOAD:
 $\left(\frac{10'}{2}\right) + 25' = 30'$

SINGLE WIRE RUN:
10 gauge



ELECTRONIC TRANSFORMERS

For areas which are far reaching from fixtures, running 120 volt power to each fixture location with individual electronic transformers, such as TRSS75 or TRSS150, provides an excellent economic solution to voltage drop. These transformers can also be specified in the UPM™, Power Pipe™, Power Pipe II™ and Power Canopy™ transformer housings.

MAGNETIC TRANSFORMERS

For LED sourced products, do not exceed more than 80% of the maximum load of the transformer.

Note: Installations should be in accordance with the National Electric Code and applicable local codes.