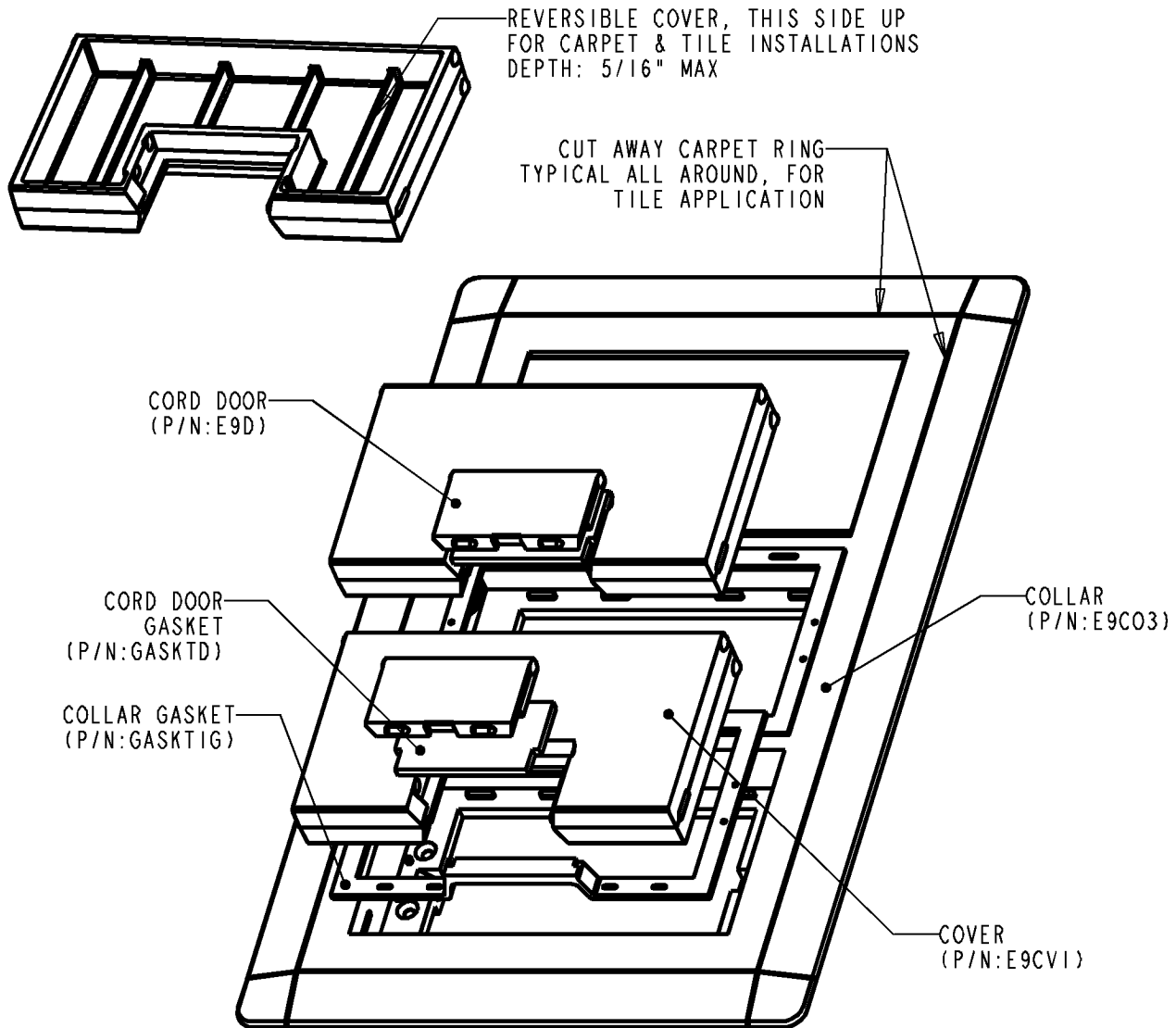



Carlton®



NOTES:

1. DIMENSIONS ARE IN INCHES AND (MILLIMETERS)
 COVER - 5.2 X 2.9 X .73, (132 X 74 X 18); CORD DOOR - 2.1 X 1.1 X .25,
 (53 X 28 X 6); COLLAR AND CARPET RING - 7.9 X 12.2 X .95, (200 X 310 X 24);
 COLLAR WITH CARPET RING REMOVED - 6.4 X 10.7 X .95, (163 X 272 X 24)
2. COLORS AVAILABLE---BROWN, CARAMEL AND SLATE.
3. SCREW PACK (P/N KE976SP) INCLUDED IN PACKAGE BUT NOT SHOWN.
4. U.S. PATENT 5,866,845

PART NO.	COLOR
E9763B	BROWN
E9763C	CARAMEL
E9763S	SLATE

GENERAL NOTES		 www.tnb.com			
1. ALL DIMENSIONS ARE FOR REFERENCE ONLY. 2. DIMENSIONS IN BRACKETS [] ARE IN METRIC UNITS.					
REVISIONS		DESCRIPTION: COLLAR ASSY. RECT. FLOOR BOX 3 GANG			
*** SEE ERN (****) FOR APPROVAL SIGNATURES & RELEASE DATE. PROJECT NO: ****		ORIGINAL PROJECT NO / (ERN NO)	SHEET NO:	REV. NO:	DRAWING NO:
		/ ()	1 OF 1	E	WSD-AC02826