

A

B

C

D

E

LOAD

LINE

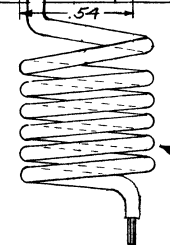
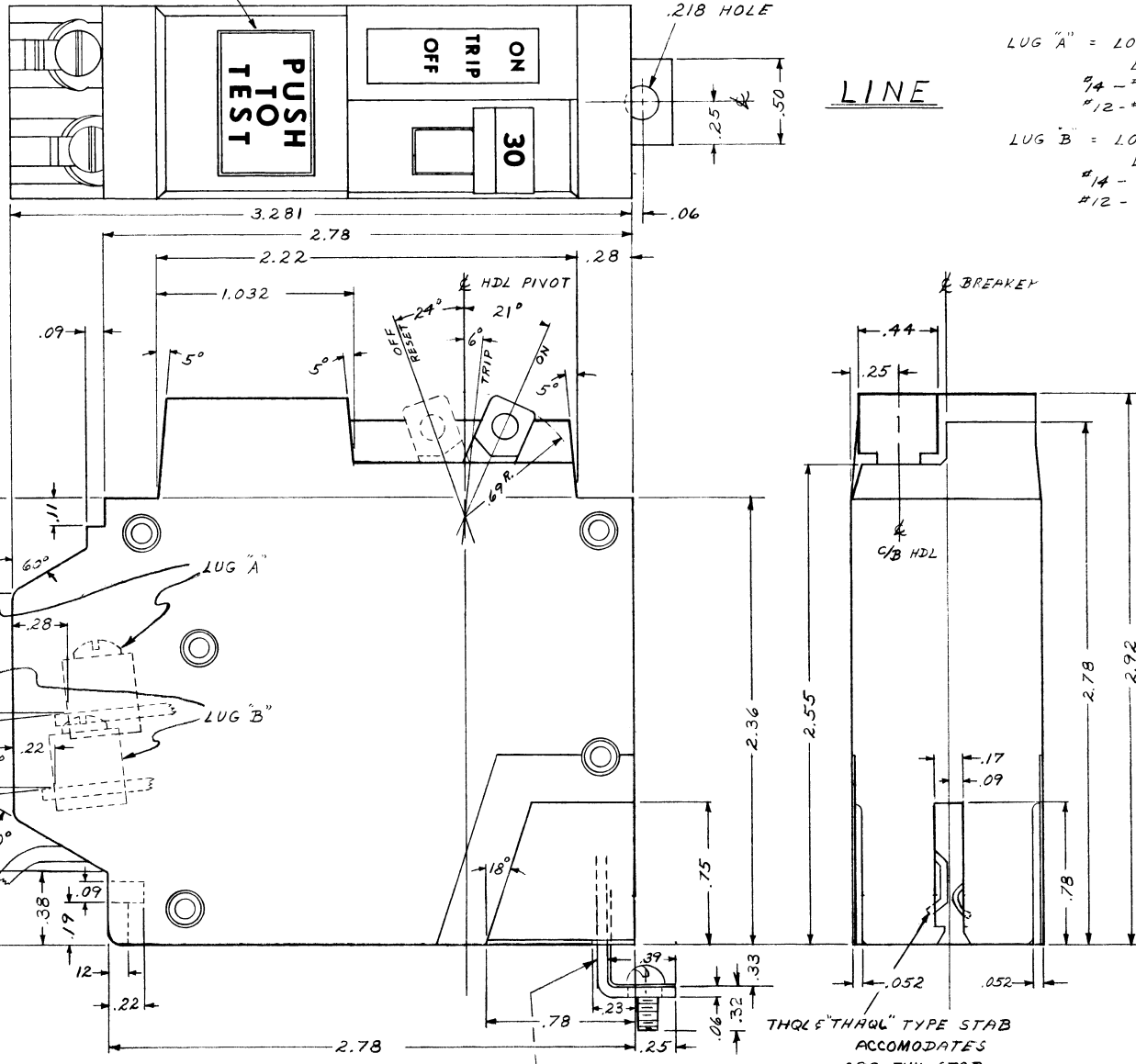
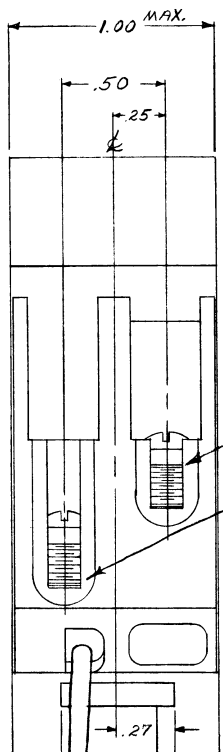
PUSHBUTTON FOR PERIODIC CHECK

PUSH
TO
TEST

OFF
TRIP
ON
30

.218 HOLE

LUG "A" = LOAD POWER ALUM. LUG
LUG WIRE RANGE
#4 - #8 AWG COP.
#12 - #6 AWG AL.
LUG "B" = LOAD NEUTRAL ALUM. LUG
LUG WIRE RANGE
#14 - #8 AWG COP.
#12 - #6 AWG AL.



PANEL NEUTRAL WIRE (18" LONG)

WIRE RANGE

15 & 20AMP #12 AWG STRANDED COPPER
25 & 30AMP #10 AWG STRANDED COPPER

THQL & THHQL TYPE STAB
ACCOMMODATES
.093 THK STAB

THQB & THHQB TYPE BOLT
ON STAB

REV. NO.	1
3	