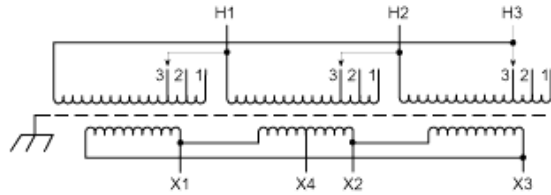
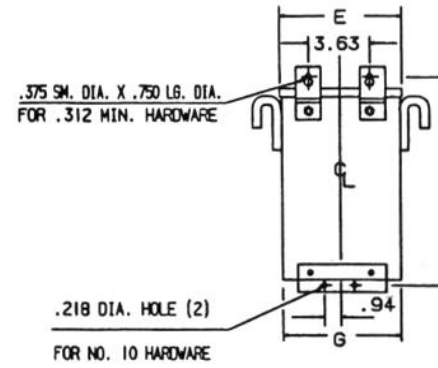
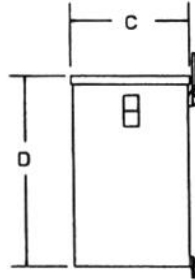
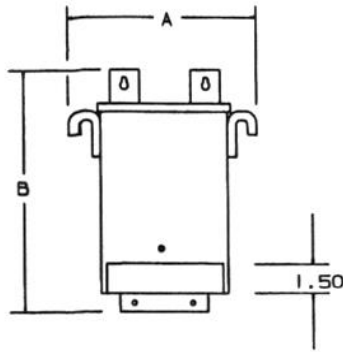
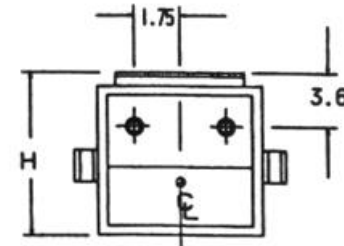


# Revisions



Primary Volts	Connect Primary Lines To	Inter-Connect	Connect Secondary Lines To
480	H1, H2, H3	1	
456	H1, H2, H3	2	
432	H1, H2, H3	3	
Secondary Volts			
240			X1, X2, X3
120			X1, X4 or X2, X4



BOTTOM

**NOTES:**

- KNOCKOUTS:**  
1.69 DIA. FOR 1.25 CONDUIT  
1.13 DIA. FOR .75 CONDUIT

KVA	CATALOG NUMBER		VOLTAGE		WIRING DIAGRAM	WEIGHT	PHASE	FREQ.
			HIGH	LOW				
3.0	<b>T-2A-53328-1S</b>		480Δ	240Δ/120		75 Lbs	3φ	60 Hz
	A	B	C	D	E	F	G	H
	12.37	11.63	7.12	9.06	9.87	10.89	9.75	7.47
Insulation:		180°C	Encapsulated		Temp Rise:		115°C	



Type No.

DATE: Jan 29, 2009