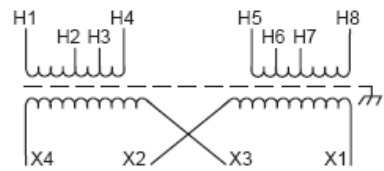
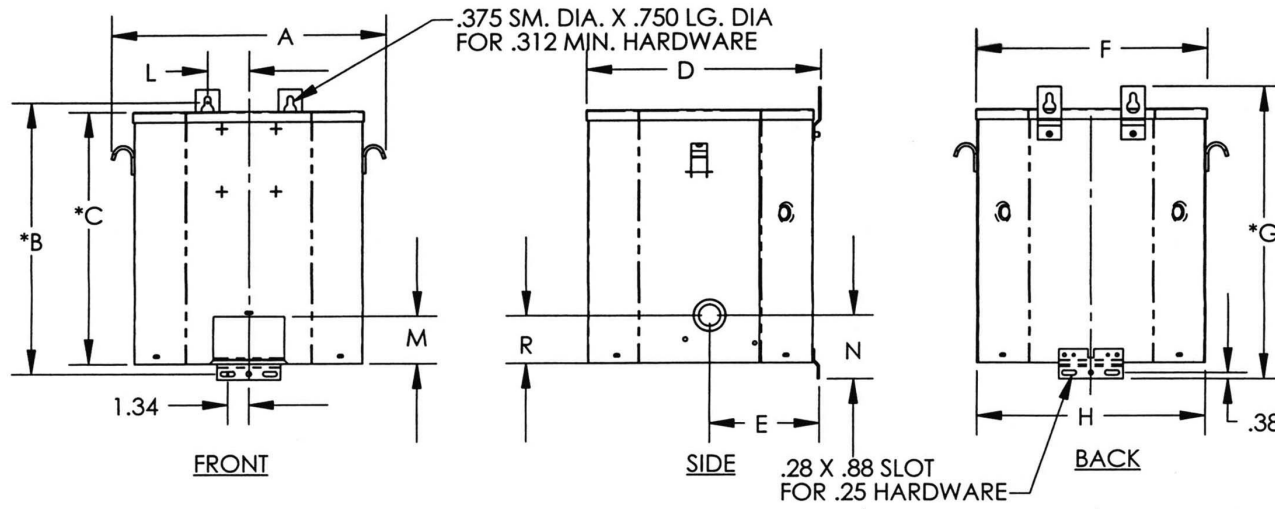
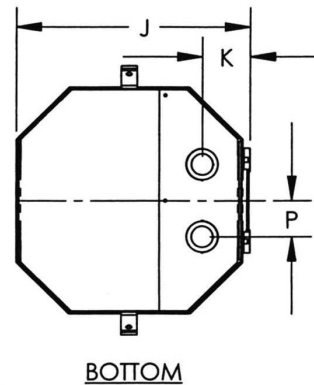


Revisions



Primary Volts	Connect Primary Lines To	Inter-Connect	Connect Secondary Lines To
120	H1 & H8	H1 to H6 H3 to H8	
208	H1 & H8	H2 to H7	
240	H1 & H8	H3 to H6	
277	H1 & H8	H4 to H5	
Secondary Volts			
240		X2 to X3	X1 & X4
120/240		X2 to X3	X1, X3, X4
120		X1 to X3 X2 to X4	X1 & X4



Type No.

KVA	CATALOG NUMBER	VOLTAGE		Wiring	WEIGHT	PHASE	FREQ.
		HIGH	LOW				
25	T-2-79748-S	120/208/240/277	120/240		261 Lbs	1φ	60 Hz

TYPICAL PERFORMANCE DATA

Winding Rise	115°C
Insulation	180°C
Sound Level	45 dB

Regulation @ 100% PF	
----------------------	--

IMPEDANCE	2.14%
-----------	-------

Typical Efficiency	98%
No Load Losses	57.7W
Full Load Losses	169.5W

DRAWN: ADR

A	B	C	D	E	F	G	H	J	K	L	M	N	P	R
16.13	17.43	16.06	13.34	4.58	13.75	18.44	13.63	13.13	2.68	2.44	3.00	3.13	2.00	3.00

A PRINTS TO **CONTROL 7**