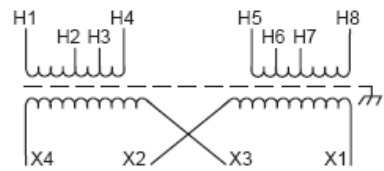
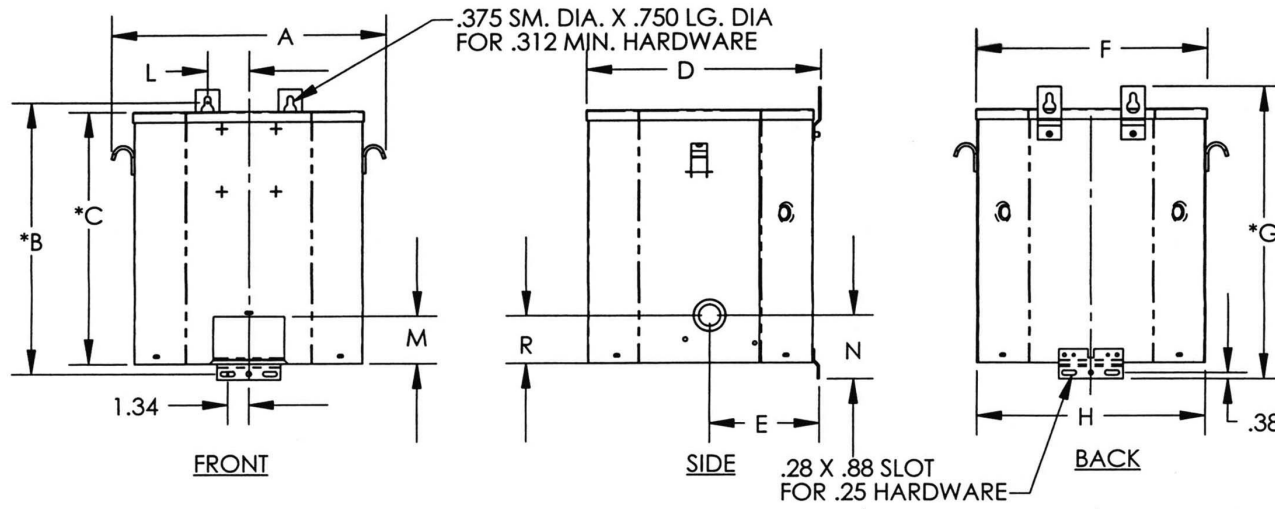
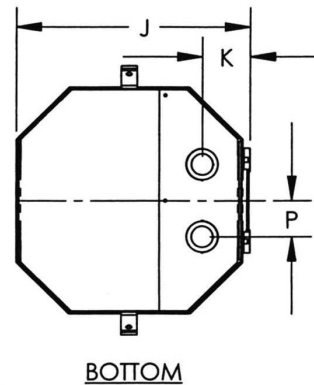


Revisions



Primary Volts	Connect Primary Lines To	Inter-Connect	Connect Secondary Lines To
120	H1 & H8	H1 to H6 H3 to H8	
208	H1 & H8	H2 to H7	
240	H1 & H8	H3 to H6	
277	H1 & H8	H4 to H5	
Secondary Volts			
240		X2 to X3	X1 & X4
120/240		X2 to X3	X1, X3, X4
120		X1 to X3 X2 to X4	X1 & X4



Type No.

KVA	CATALOG NUMBER	VOLTAGE		Enclosure	WEIGHT	PHASE	FREQ.
		HIGH	LOW				
15	T-2-79747-S	120/208/240/277	120/240	NEMA-3R	171 Lbs	1 ϕ	60 Hz

TYPICAL PERFORMANCE DATA

Winding Rise	115°C	Regulation @ 100% PF	IMPEDANCE	Typical Efficiency	
Insulation	180°C			No I Load Losses	
Sound Level	45 dB			Full Load Losses	

A	B	C	D	E	F	G	H	J	K	L	M	N	P	R
14.12	15.93	14.56	11.59	4.54	11.75	16.94	11.62	11.38	2.68	2.44	3.00	3.13	2.00	3.00

DATE: March 18, 2011

Drawn: ADR

A

PRINTS TO

CONTROL
7