

CABLE SIZES ACCOMMODATED

ALUM. TO ALUM., ALUM TO COPPER, COPPER TO COPPER CONDUCTORS

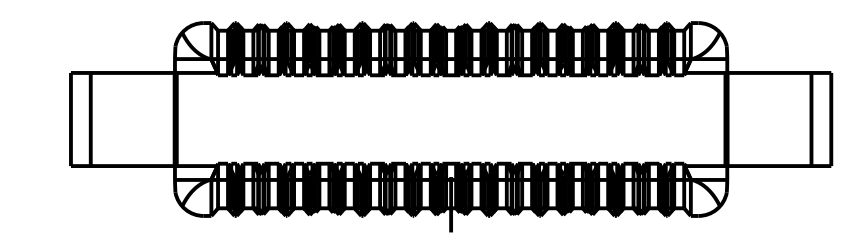
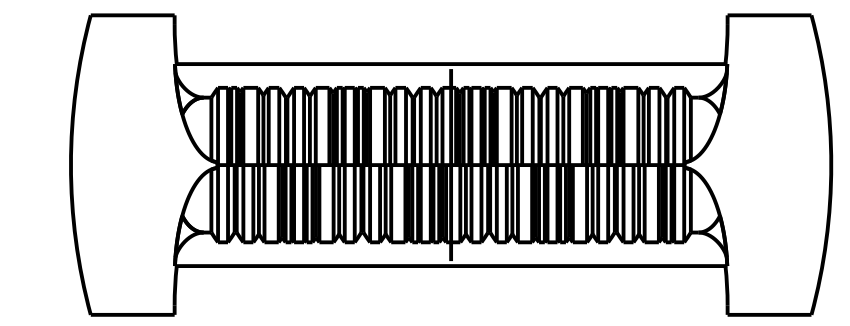
MAX RUN TO MAX TAP		MIN RUN TO MIN TAP		MAX RUN TO MIN TAP		RECOMMENDED TIGHTENING TORQUE IN LBS	CATALOG NO.	FIG
#6 STR (.184)	#6 STR (.184)	#10 SOL (.102)	#10 SOL (.102)	#6 STR (.184)	#10 SOL (.102)			
#4 STR (.232)	#4 STR (.232)	#8 SOL (.129)	#10 SOL (.102)	#4 STR (.232)	#10 SOL (.102)	165 [18.6 N M]	KSA4	1
#2 STR (.292)	#2 STR (.292)	#6STR COMPACT(.169)	#8 STR (.146)	#2 STR (.292)	#8 STR (.146)	275 [31.1 N M]	KSA2	1
1/0 STR (.373)	1/0 STR (.373)	#2STR COMPACT(.268)	#8 SOL (.129)	1/0 STR (.373)	#8 SOL (.129)	385 [43.5 N M]	KSA1/0	1
2/0 STR (.418)	2/0 STR (.418)	#2STR COMPACT(.268)	#8 STR (.146)	2/0 STR (.418)	#8 STR (.146)	385 [43.5 N M]	KSA2/0	1
4/0 STR (.528)	4/0 STR (.528)	#2STR COMPACT(.268)	#6 STR (.184)	4/0 STR (.528)	#6 STR (.184)	500 [56.5 N M]	KSA4/0	1
350 Kcmil (.681)	350 Kcmil (.681)	1/0STR COMPACT(.336)	#4 STR (.132)	350 Kcmil (.681)	#4 STR (.232)	650 [73.4 N M]	KSA350	2
500 Kcmil (.813)	500 Kcmil (.813)	400 Kcmil COMPACT(.659)	#2 STR COMPACT(.268)	500 Kcmil (.813)	#2 STR COMPACT(.268)	825 [93.2 N M]	KSA500	2

METRIC CABLE SIZES ACCOMMODATED

ALUM. TO ALUM., ALUM. TO COPPER, COPPER TO COPPER CONDUCTORS

MAX RUN TO MAX TAP		MIN RUN TO MIN TAP		MAX RUN TO MIN TAP		CATALOG NO.	FIG
10mm ² STR [4.1]	10mm ² STR [4.1]	6mm ² SOL [2.8]	6mm ² SOL [2.8]	10mm ² STR [4.1]	6mm ² SOL [2.8]		
16mm ² STR [5.1]	16mm ² STR [5.1]	10mm ² SOL [3.6]	10mm ² SOL [3.6]	16mm ² STR [5.1]	6mm ² SOL [2.8]	KSA4	1
35mm ² STR [7.6]	35mm ² STR [7.6]	16mm ² STR [5.1]	16mm ² STR [5.1]	35mm ² STR [7.6]	10mm ² STR [4.1]	KSA2	1
35mm ² STR [7.8]	35mm ² STR [7.8]	35mm ² STR [7.6]	10mm ² STR [4.1]	4mm ² STR [2.6]	10mm ² SOL [3.6]	KSA1/0	1
70mm ² STR [10.9]	70mm ² STR [10.9]	35mm ² STR [7.6]	10mm ² SOL [3.6]	70mm ² STR [10.9]	10mm ² STR [4.1]	KSA2/0	1
95mm ² STR [12.8]	95mm ² STR [12.8]	35mm ² STR [7.6]	16mm ² STR [5.1]	95mm ² STR [12.8]	16mm ² STR [5.1]	KSA4/0	1
185mm ² STR [17.8]	185mm ² STR [17.8]	50mm ² STR [9.3]	25mm ² STR [6.5]	185mm ² STR [17.8]	25mm ² STR [6.5]	KSA350	2
240mm ² STR [20.3]	240mm ² STR [20.8]	240mm ² STR [20.3]	35mm ² STR [7.6]	240mm ² STR [20.3]	35mm ² STR [7.6]	KSA500	2

REV	DATE	DESCRIPTION	ECO	BY	C'H'K.
B	06/23/2011 02:00:00 AM	REDRAW TO PRO-E	24434	BD	MA



VIEW OF TYPICAL SPACER USED WITH TYPICAL PRESSURE BAR AND ASSEMBLY

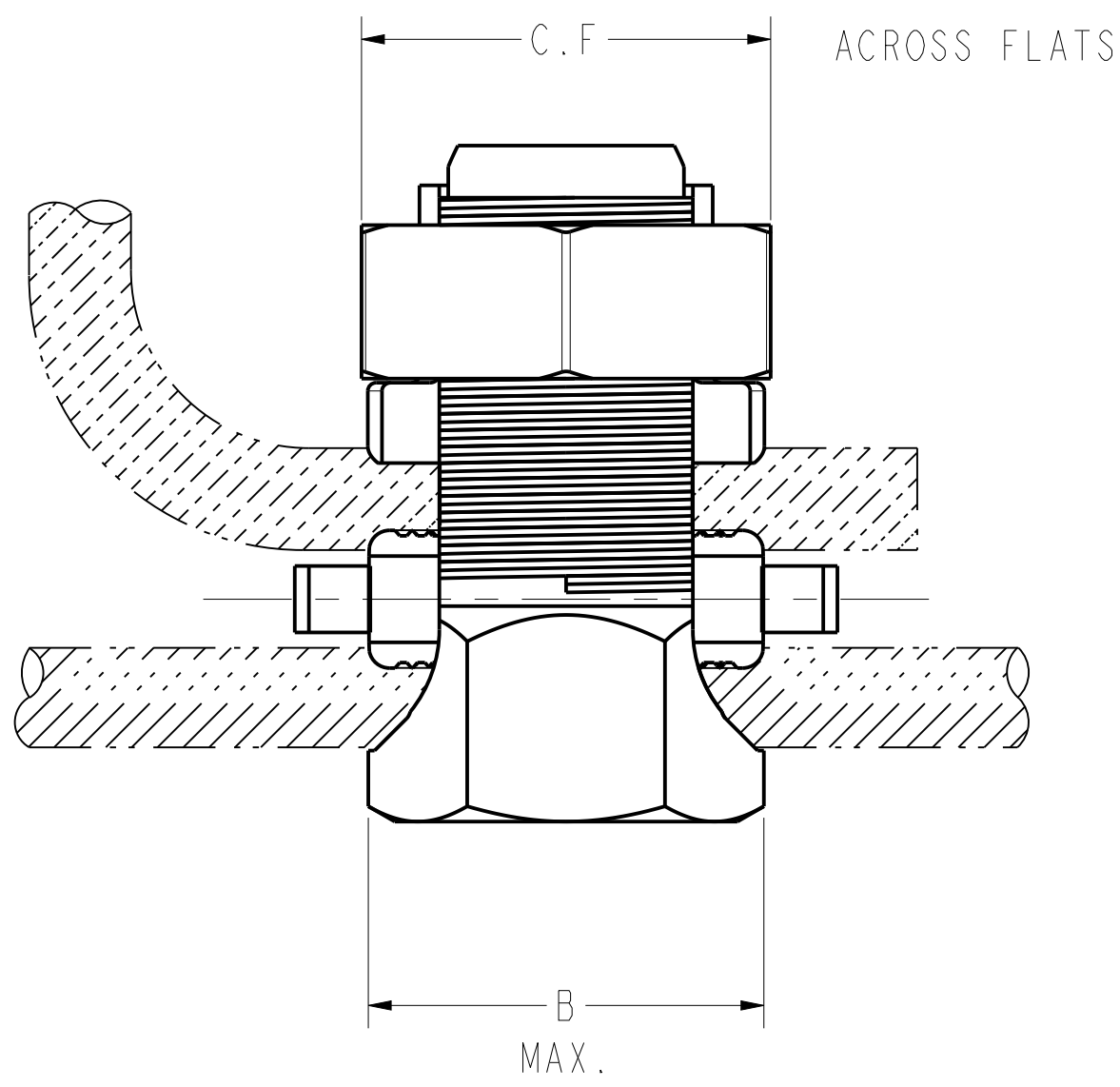
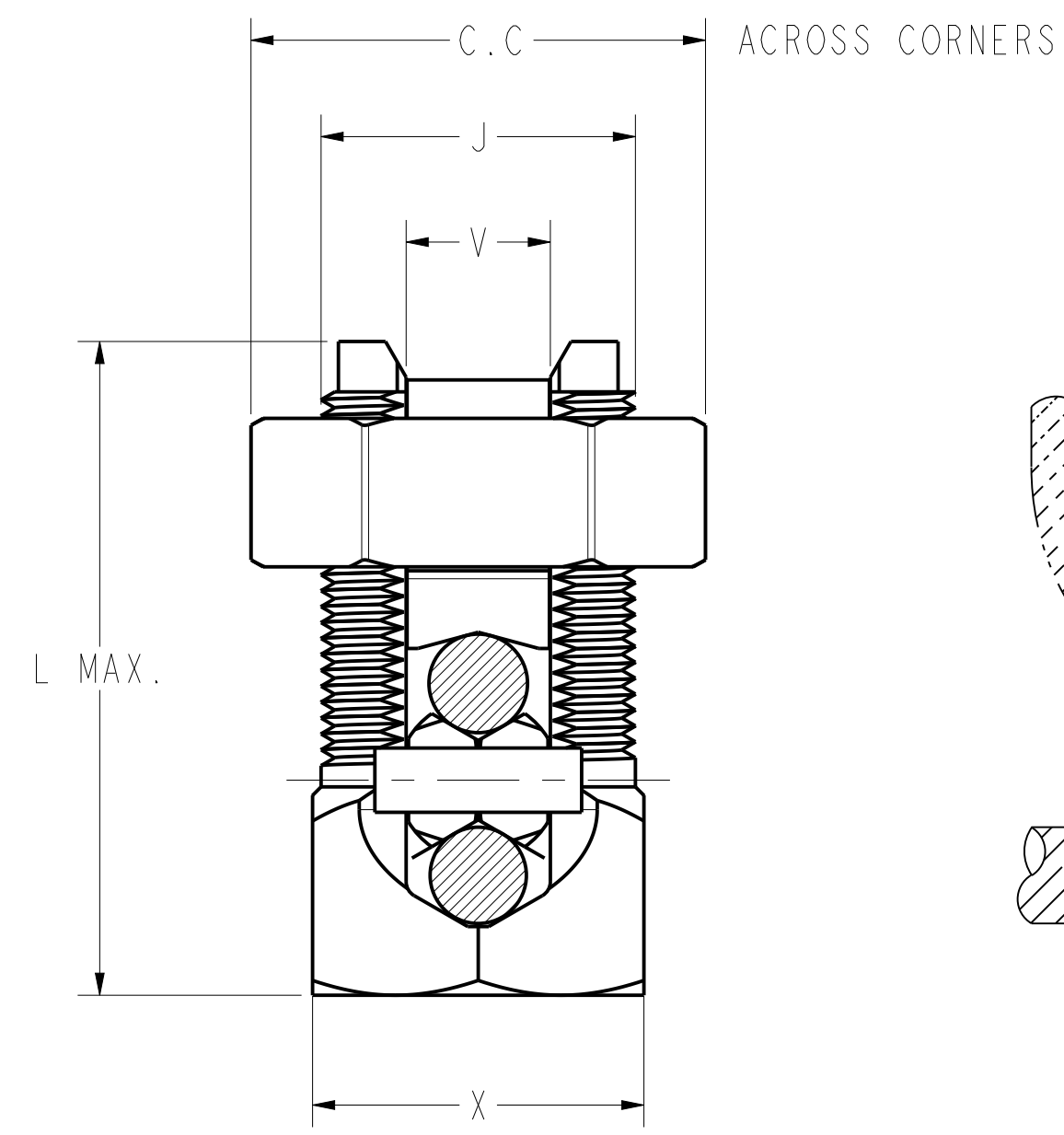


FIG. 1

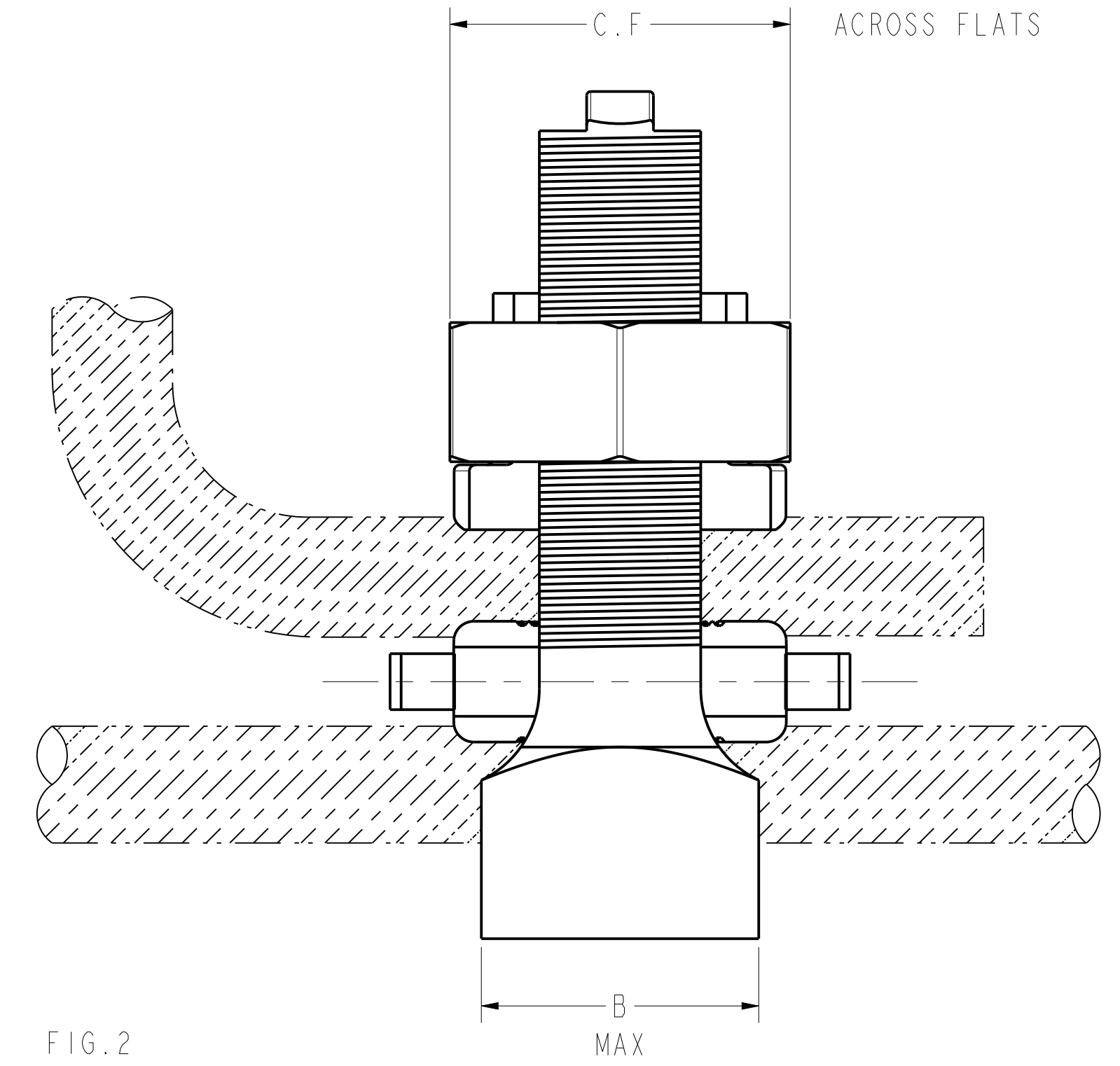
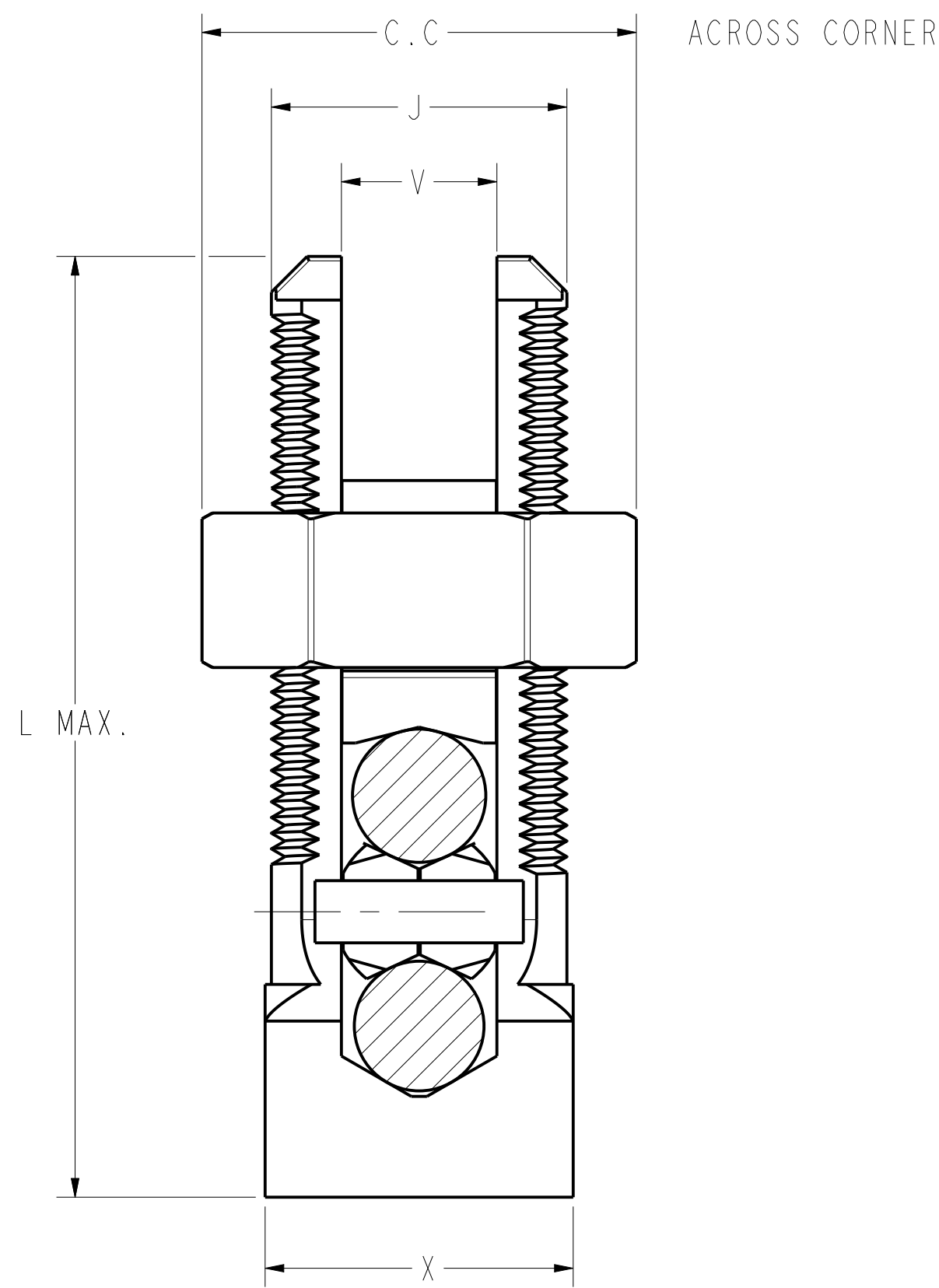


FIG. 2

NOTES:

- MATERIAL: ALUMINUM ALLOY
- FINISH: TIN PLATED
- DIMENSIONS IN BRACKETS [] ARE IN MILLIMETERS ROUNDED OFF TO THE NEAREST MILLIMETER, UNLESS OTHERWISE NOTED, AND ARE FOR REFERENCE ONLY.
- ALL SIZES ARE UL 486B LISTED. FILE NO. E9498.
- ALL SIZES ARE CSA C22.2 NO. 65 LISTED. FILE NO. 42862 & 42682-C40

TO ORDER BURNDY® PRODUCTS CALL		SERVIT®	
UNITED STATES 1-800-346-4175 (LONDONDERRY, NH)		ITEM NO: --	CAT. NO: KSA-- (SEE TABLE)
CANADA: 1-800-361-6975 (QUEBEC) 1-800-387-6487 (ALL OTHER PROVINCES)		DRAWN BY: H.C. 06/27/80	CHECKER: A.K.K. 07/21/80
FOR PRODUCT INFO: http://www.burndy.com		DSN APPVL: W.F. 07/21/80	MFG APPVL: --
		GA APPVL: A.LLOYD 10/26/80	MKT APPVL: L.HERRON 10/20/80
		PROD FAM: --	SCALE: 3:4
		PROJECT #: --	SIZE: D
		DOCUMENT TYPE: Sales	DRAWING NO: SD084189
		REL LEVEL: Released	SHEET 1 OF 2

REV: PEO200