

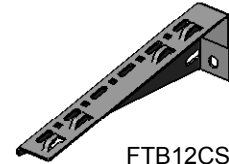
| CATALOG NUMBER | FLEXTRAY WIDTH | LENGTH | | HEIGHT | | A | | WT/PC | |
|----------------|----------------|--------|-------|--------|-------|------|-------|-------|-----|
| | | IN | MM | IN | MM | IN | MM | LBS | KG |
| FTB06CS | 6" | 7.16 | 181.8 | 2.66 | 67.5 | 1.42 | 36.1 | 0.71 | 0.3 |
| FTB08CS | 8" | 9.13 | 231.8 | 3.31 | 84.1 | 2.08 | 52.8 | 0.99 | 0.4 |
| FTB12CS | 12" | 13.06 | 331.8 | 3.44 | 87.3 | 2.20 | 55.9 | 1.36 | 0.6 |
| FTB16CS | 16" | 17.00 | 431.8 | 4.44 | 112.7 | 3.20 | 81.3 | 2.00 | 0.9 |
| FTB18CS | 18" | 18.97 | 481.8 | 4.94 | 125.4 | 3.70 | 94.0 | 2.37 | 1.1 |
| FTB20CS | 20" | 20.94 | 531.8 | 5.69 | 144.5 | 4.45 | 113.0 | 2.84 | 1.3 |
| FTB24CS | 24" | 24.88 | 631.8 | 6.44 | 163.5 | 5.20 | 132.1 | 3.63 | 1.6 |



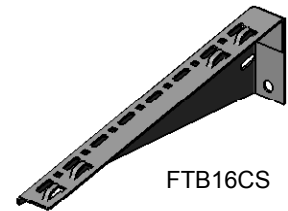
FTB06CS



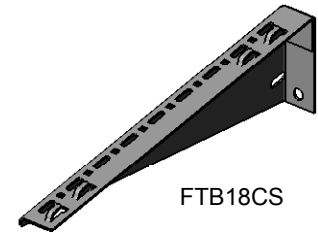
FTB08CS



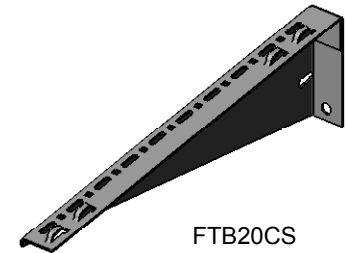
FTB12CS



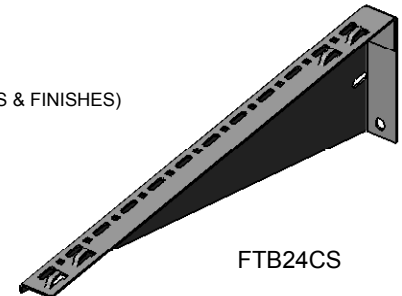
FTB16CS



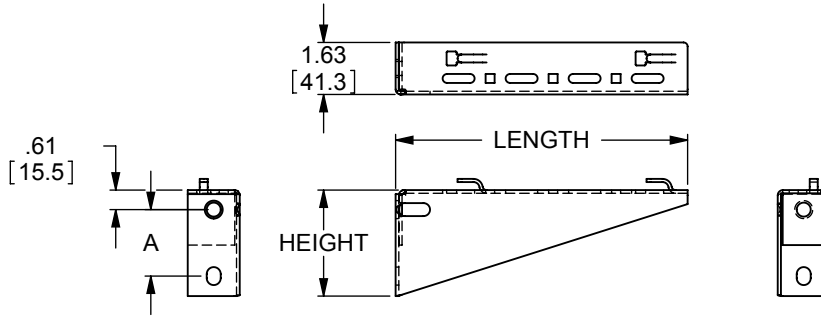
FTB18CS



FTB20CS

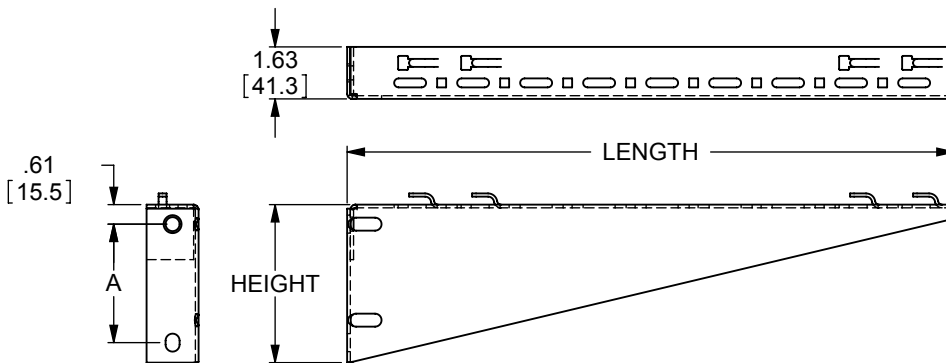


FTB24CS



FTB06CS & FTB08CS
(FTB08CS SHOWN)

DIMENSIONS IN BRACKETS [] ARE MILLIMETERS



FTB12CS THRU FTB24CS
(FTB18CS SHOWN)

- MATERIAL:
12GA GALVANIZED STEEL (CONSULT CUSTOMER SERVICE FOR AVAILABILITY OF ALTERNATE MATERIALS & FINISHES)
- ATTACHES TO VERTICAL SURFACE WITH $\phi 3/8"$ HARDWARE (ORDER HARDWARE SEPARATELY)
- MULTIPLE METHODS AVAILABLE FOR SECURING FLEXTRAY TO BRACKET:
 - BUILT-IN HOLD-DOWN TABS
 - TOOLLESS CLIP (ORDER SEPARATELY)
 - TOP WASHER & FTHDWE 1/4 (ORDER SEPARATELY)
 - SUPT WASHER & FTHDWE 1/4 (ORDER SEPARATELY)
- SLOTS FOR CLAMPS TO MOUNT ON RAISED FLOOR STANCHION (ORDER CLAMPS SEPARATELY)

THIS DRAWING AND/OR THE TECHNICAL INFORMATION CONTAINED HEREON IS THE PROPERTY OF COOPER B-LINE, INC. ("B-LINE"), AND IS ISSUED IN CONFIDENCE FOR B-LINE ENGINEERING PURPOSES ONLY AND MAY NOT BE REPRODUCED OR USED FOR ANY PURPOSE WHATSOEVER WITHOUT THE EXPRESS WRITTEN PERMISSION OF B-LINE TO THE USER. THIS DRAWING AND/OR TECHNICAL INFORMATION IS THE PROPERTY OF B-LINE AND IS LOANED FOR MUTUAL ASSISTANCE. TO BE RETURNED WHEN ITS INTENDED PURPOSE HAS BEEN SERVED.

| | | | | |
|--|---|--|--|-----------------------------------|
| <p>509 W. Monroe Street Highland, IL 62249 Phone (618) 654-2184 FAX (618) 654-5499 www.cooperbline.com</p> | SUBMITTAL DRAWING | | REFERENCE DWG(S): | SUBMITTAL NO: S00015622 |
| | TITLE: FLEXTRAY SHELF BRACKET FTB06CS THRU FTB24CS | | | DRAWN BY: MLW REV: A |
| | | | | DATE: 11/07/08 |
| | <small>EQUIPMENT FURNISHED HAS BEEN FABRICATED IN ACCORDANCE WITH THIS DRAWING.</small> | | MODEL SOURCE FILE: 00015622 REV: 01 | SHEET: 1 OF 1 |