

# Plug Into Zimmies

## Electrical Newsletter

December  
2018



### This month:

- Branch News
- Safety Message
- Holiday Closing
- Price Increases
- New Products



As of January 1st, our Gloversville branch will be consolidating with our Latham location. Our Latham store, located at 22 Wade Road, provides our customers with easy access off the highway and additional delivery drivers for next day delivery. Please remember to pick up any Will-Call orders by Friday, December 28th which will be our last day of operation in our Gloversville store!

**[For More on our NY Locations Click Here](#)**



Some may argue that an important attribute of a qualified individual in the electrical industry is the ability to recognize electrical hazards. An electrical hazard is a dangerous condition that could result in electric shock, arc flash burn, thermal burn, or arc blast injury. The first step to success is to understand what electrical hazards are and then to realize that not all electrical equipment or applications are the same. The journey to recognizing electrical hazards is not necessarily straight forward but there are some basic concepts that once understood can make a difference in success.

**[Click Here to Read On](#)**



The following vendors will have price increases starting December 1st:

- Brother
- Burndy
- Milwaukee
- Panduit
- Philips Luminaires
- Raco/Taymac/Bell
- Rittal
- Topaz Lighting
- Erico Caddy



We will be closed:

**Christmas Eve  
Christmas Day  
New Years Day**

We will be **closing at NOON:**  
**New Years Eve!**

We wish you all a Merry  
Christmas and a Happy New Year!

and ask to have a Hot Sheet sent out with your pricing. We can also do your top 100 items. Have your pricing at your fingertips each week. Contact Eric Martenson at [emartenson@hzelectric.com](mailto:emartenson@hzelectric.com) to sign up today!

# New Products

## Safe and Sound



### 1040931

- 3-in-1 Smoke & Carbon Monoxide Alarm, Premium Home Speaker, and Embedded Alexa
- Voice announces programmed location of the unit and danger detected
- Requires AC power, interconnects with most existing hardware alarms without re-wiring with our easy-adaptor plug
- Multi-color Indicator Ring provides visual indication of various alarm states

[Click Here to Learn More](#)



## Wobblelight® V2 LED Work Light



### 111301LED

- Patented Self-Righting Technology
- LED Panel Technology
- Features an integrated carry handle into the body
- Covered receptacle for interlinking up to 6 units and an IP54 rating for damp location use
- 5 foot integrated cord

[Click Here to Learn More](#)



## Hang-A-Light® 120W LED Longneck



### 1110120eco

- 360° of light with low-cost operation
- Integrated 5' power cord and spring loaded, steel safety hook make for fast installation
- Heavy gauge steel safety case has an added bottom guard for protection and durability
- Built-in electrical receptacle and no heavy external ballast for portability and ease of

## 20W LED Dock Light



### 111510

- High powered 20W LED Head
- 1,700 lumens
- 15° beam angle
- 5 foot power cord

[Click Here to Learn More](#)



## Box Extender/Leveling Ring

use

[Click Here to Learn More](#)



### Recessed Cover Kit with TR Receptacle



**FLBC4560DBR**

**FLBC4560DMB**

**FLBC4560DNL**

- Reduce the trip hazard caused by plugs sticking out of the box
- Install in the can so they look great
- Power and low-voltage in the same box
- Kits include: leveling ring assembly with carpet flange, funnel and installed UL Listed, tamper resistant 15 A decorator-style receptacle, low voltage keystone holder insert and blank insert, low voltage divider, blank cover with gasket, in-use slotted plug cover, (3) #8 x 5/8" flat head screws

[Click Here to Learn More](#)



### Zinc Plated Steel Staple



**SN 200 IB 100**

**SN 200 IB 250**

- Insulated staples have LDPE orange plastic insulator

**Visit us In-store to Learn More**



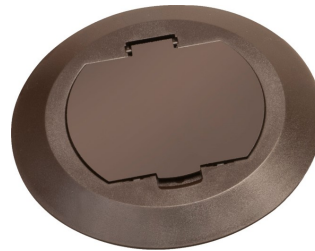
**FLBC4500LRBE**

- The best solution for adding depth to an installed round concrete box
- Extends an installed 4-1/2" round box up to 2"
- Allows for a level cover installation
- Easy to install

[Click Here to Learn More](#)



### Recessed Cover Kit with TR Receptacle



**FLBC4520BR**

**FLBC4520GY**

- Available with flip lids or threaded plugs in brass or nickel-plated brass
- Easy installation of receptacles
- Selection of leveling rings and adapters allows our covers to fit our boxes and most other manufacturers' concrete boxes
- Made of heavy duty plastic, 4.5" non-metallic concrete box is a common size that accommodates Arlington's 6" round covers as well as most other round covers on the market

[Click Here to Learn More](#)

